

# Management Information Pack

---

Marc Seale, Chief Executive & Registrar  
Fitness to Practise Figures for April 2010 to 200 to  
Executive Management Team

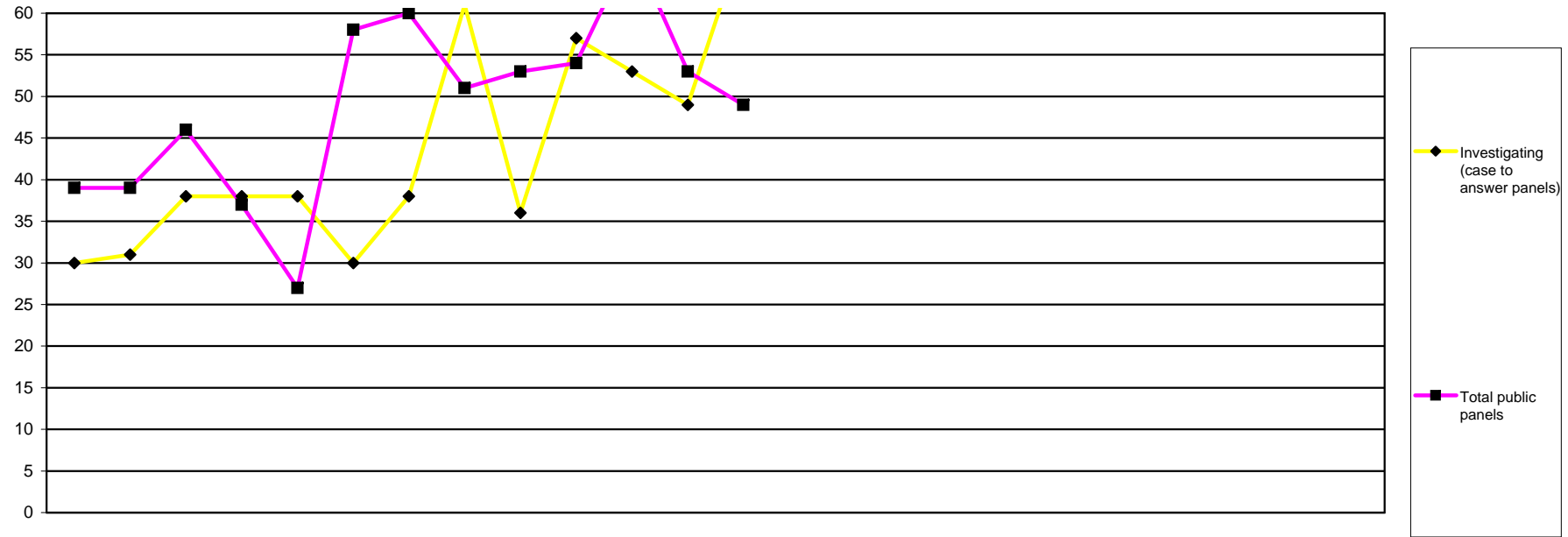


**Management Reporting Information to Executive Management Team**  
**Fitness to Practise**  
**Figures for 2009 - 2010**

<b>Fitness to Practise</b>	Total Cases Considered	<b>3</b>
	Enquiries and allegations: source	<b>4</b>
	Total Investigating Panel decisions and referrals	<b>6</b>
	Length of time: Allegations	<b>8</b>
	Length of time: Cases Investigating Committee 2003-4 to 2009-10	<b>9</b>
	Allegations made: conclusion of final hearing 2003-4 to 2009-10	<b>10</b>
	Allegations made: Investigating Panel 2003-4 to 2009-10	<b>13</b>
	Interim Orders by profession	<b>16</b>
	Panel Hearings, Decisions	<b>17</b>
	Cases Pending: Investigating Committee	<b>22</b>
	Cases Pending: Conduct and Competence, Health & Review Hearing	<b>23</b>
	<b>Registration Appeals</b>	<b>25</b>
	<b>Protection of Title</b>	<b>26</b>
	<b>Health and Character</b>	<b>27</b>

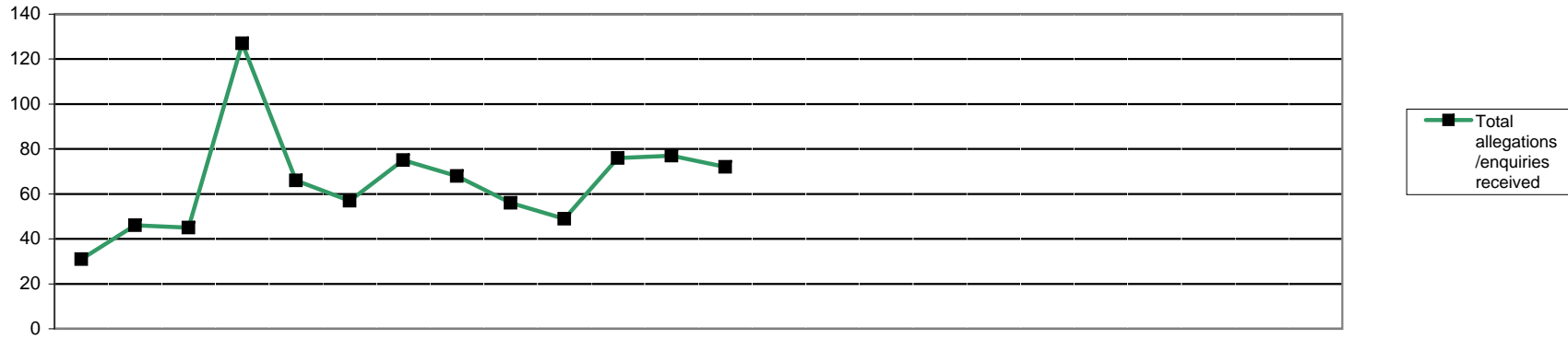
Health Professions Council

Total cases considered April 2009- March 2011



	2009			2010									2011			2007/8	2008/9	09/10	10/11															
	Apr	May	Jun	Jul	Aug	Sep	Oct	Nov	Dec	Jan	Feb	Mar	Apr	May	Jun	Jul	Aug	Sep	Oct	Nov	Dec	Jan	Feb	Mar	FYE	FYE	FYE	YTD						
Investigating (case to answer panels)	30	31	38	38	38	30	38	61	36	57	53	49	69																					
Investigating (incorrect entry)	1	1	0	0	0	0	0	0	0	0	1	1	0																					
Conduct & Competence	20	19	27	26	24	37	36	29	31	34	33	35	29																					
Health	1	0	0	0	0	0	1	0	0	3	1	0	1																					
Review cases	3	9	8	2	9	9	10	14	8	9	10	5	8																					
Interim order (application)	9	2	3	2	3	4	2	2	7	4	5	3	4																					
Interim order (review)	5	8	8	7	5	8	11	6	7	4	18	9	7																					
<b>Total public panels</b>	<b>39</b>	<b>39</b>	<b>46</b>	<b>37</b>	<b>27</b>	<b>58</b>	<b>60</b>	<b>51</b>	<b>53</b>	<b>54</b>	<b>68</b>	<b>53</b>	<b>49</b>																					
<b>Total panels</b>	<b>69</b>	<b>70</b>	<b>84</b>	<b>75</b>	<b>79</b>	<b>88</b>	<b>98</b>	<b>112</b>	<b>89</b>	<b>111</b>	<b>121</b>	<b>102</b>	<b>118</b>																					

This table displays how many cases were considered by each type of panel



Source of enquiry	2009												2010												2011						2005/6	2006/7	2007/8	2008/9	09/10	10/11							
	Apr	May	Jun	Jul	Aug	Sep	Oct	Nov	Dec	Jan	Feb	Mar	Apr	May	Jun	Jul	Aug	Sep	Oct	Nov	Dec	Jan	Feb	Mar	Apr	May	Jun	Jul	Aug	Sep	Oct	Nov	Dec	Jan	Feb	Mar	FYE	FYE	FYE	FYE	FYE	YTD	
<b>Total enquiries</b>	5	19	17	45	19	22	24	19	15	15	14	29	17																			Not recorded			109	142	243	17					
<b>Employer</b>	3	9	8	10	8	10	15	5	4	2	3	1	3																						44	50	78	3					
<b>Public</b>	0	8	4	30	6	10	4	4	9	11	7	21	8																						32	42	114	8					
<b>Police</b>	0	0	2	0	0	0	0	0	1	0	0	1	0																						3	4	4	0					
<b>Professional body</b>	0	0	0	0	0	0	0	0	0	0	0	0	0																						1	2	0	0					
<b>Registrant</b>	1	1	1	2	1	1	2	6	1	0	0	2	6																						13	19	18	6					
<b>Other</b>	0	0	0	2	2	1	1	3	0	1	3	1	0																						2	10	14	0					
<b>Article 22(6)/Anon</b>	1	1	2	1	2	0	2	1	0	1	1	3	0																						14	15	15	0					
<b>Total allegations</b>	26	27	28	82	47	35	51	49	41	34	62	48	55	#N/A	#N/A	#N/A	#N/A	#N/A	#N/A	#N/A	#N/A	#N/A	#N/A	#N/A	21													316	322	315	341	530	55
<b>Employer</b>	12	21	12	26	13	10	18	11	11	15	20	13	21																			113	164	127	149	182	21						
<b>Public</b>	3	1	7	33	16	8	14	15	15	8	18	15	21																			61	77	76	67	153	21						
<b>Police</b>	3	2	2	4	4	4	2	2	2	5	3	3	4																			27	31	32	32	36	4						
<b>Professional body</b>	0	0	0	0	0	1	0	0	0	0	0	0	1																			0	1	6	1	1	1						
<b>Registrant</b>	4	1	1	3	3	4	5	6	2	2	5	9	0																			30	16	22	30	45	0						
<b>Other</b>	1	0	1	6	1	2	3	2	2	0	1	2	3																			13	7	3	14	21	3						
<b>Article 22(6)/Anon</b>	3	2	5	10	10	6	9	13	9	4	15	6	5																			57	23	49	48	92	5						
<b>Misconduct</b>	14	16	13	53	32	23	41	33	28	23	43	36	41																			205	228	177	223	355	41						
<b>Lack of competence</b>	6	4	10	15	8	7	7	7	5	6	10	6	4																			33	44	29	50	91	4						
<b>Conviction/caution</b>	5	6	4	12	4	5	3	7	5	5	6	6	8																			41	41	49	51	68	8						
<b>Health</b>	1	0	0	1	1	0	0	1	1	0	0	0	2																			2	1	1	7	5	2						
<b>Other regulator</b>	0	0	0	0	0	0	0	0	0	0	0	0	0																			1	0	2	1	0	0						
<b>Incorrect or fraudulent entry</b>	0	1	1	1	2	0	0	1	2	0	2	0	0																			33	3	4	6	10	0						
<b>Not classified</b>	0	0	0	0	0	0	0	0	0	0	0	0	0																					24	3	0	0						
<b>Total allegations/enquiries received</b>	21	16	15	127	68	57	75	68	56	49	76	77	72																			314	318	424	483	773	72						

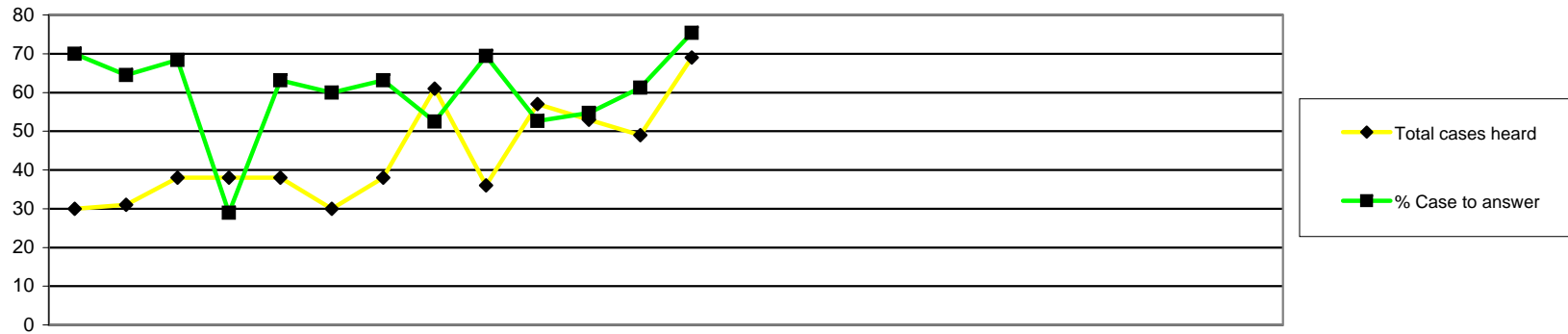
## Health Professions Council

## Enquiries and Allegations: Profession &amp; source of complaint April 2010 -

## Fitness to Practise Department

	Employer	Public	Police	Professional Body	Registrant	Other	Article 22(6)/Anon
Arts therapists	1	0	0	0	0	0	1
Biomedical scientists	3	0	0	0	0	0	0
Chiropodists & podiatrists	1	4	1	0	0	0	
Clinical scientists	0	0	0	0	0	0	0
Dietitians	1	0	0	0	0	0	0
Hearing aid dispensers	4	11	0	1	0	1	0
Occupational therapists	0	3	0	0	1	2	1
ODPs	2	1	1	0	0	0	1
Orthoptists	0	0	0	0	0	0	0
Paramedics	6	1	0	0	0	0	2
Physiotherapists	2	1	1	0	5	0	0
Practitioner psychologists	0	6	0	0	0	0	0
Prosthetists & orthotists	0	0	0	0	0	0	0
Radiographers	3	0	1	0	0	0	0
SLTs	1	2	0	0	0	0	0
<b>Total</b>	<b>24</b>	<b>29</b>	<b>4</b>	<b>1</b>	<b>6</b>	<b>3</b>	<b>5</b>

Total 2007/8	Total 2008/9	Total 2009/10	Total to date
16	10		2
26	43		3
40	62		6
6	8		0
14	1		1
			17
45	55		7
38	55		5
3	0		0
94	100		9
85	95		9
N/A	N/A		6
3	6		0
32	34		4
22	14		3
424	483		72



	2009			2010									2011					2006/7	2007/8	2008/9	09/10	10/11								
	Apr	May	Jun	Jul	Aug	Sep	Oct	Nov	Dec	Jan	Feb	Mar	Apr	May	Jun	Jul	Aug	Sep	Oct	Nov	Dec	Jan	Feb	Mar	FYE	FYE	FYE	FYE	YTD	
<b>Total cases heard</b>	30	31	38	38	38	30	38	61	36	57	53	49	69													178	299	363	499	69
<b>Referred to CCC (Reg representations)</b>	13	13	20	7	14	12	18	21	18	19	19	20	34														97	126	194	34
<b>Referred to CCC (Rep representations)</b>	0	1	1	2	2	1	2	2	3	3	1	2	3														25	14	20	3
<b>Referred to CCC (No representations)</b>	6	5	4	2	7	5	3	9	4	7	8	7	10														57	60	67	10
<b>Referred to HC (Reg representations)</b>	1	1	0	0	1	0	1	0	0	0	1	1	2														3	5	6	2
<b>Referred to HC (Rep representations)</b>	0	0	0	0	0	0	0	0	0	0	0	0	0														2	0	0	0
<b>Referred to HC (No representations)</b>	0	0	1	0	0	0	0	0	0	0	0	0	3														1	0	1	3
<b>Referred to IC (Reg representations)</b>	1	0	0	0	0	0	0	0	0	0	0	0	0														1	0	1	0
<b>Referred to IC (Rep representations)</b>	0	0	0	0	0	0	0	0	0	0	0	0	0														0	0	0	0
<b>Referred to IC (No representations)</b>	0	0	0	0	0	0	0	0	0	1	0	0	0														0	1	1	0
<b>Total case to answer</b>	21	20	26	11	24	18	24	32	25	30	29	30	52													82	186	206	290	52
<b>% Case to answer</b>	70	64.5	68.4	28.9	63.2	60	63.2	52.5	69.4	52.6	54.7	61.2	75.4														62	57	58	75
<b>Not referred (Reg representations)</b>	9	8	10	24	11	9	12	26	10	21	20	16	15														78	115	176	15
<b>Not referred (Rep representations)</b>	0	0	1	2	1	1	0	0	0	2	1	0	1														8	13	8	1
<b>Not referred (No representations)</b>	0	1	1	0	1	1	2	1	0	2	2	3	0														21	21	14	0
<b>Total cases not referred</b>	9	9	12	26	13	11	14	27	10	25	23	19	16														107	149	198	16
<b>Further Information</b>	0	1	0	1	1	1	0	2	1	2	1	0	1													14	6	8	10	1

**By profession**

	No Case to Answer	Case to answer				Total YTD
		FI	CCC	HC	IC	
Arts therapists	0	0	0	0	0	0
Biomedical scientists	2	0	2	1	0	5
Chiropodists & podiatrists	2	0	3	1	0	6
Clinical scientists	0	0	0	0	0	0
Dietitians	0	0	0	0	0	0
Hearing aid dispensers	0	0	0	0	0	0
Occupational therapists	1	0	2	2	0	5
ODPs	0	0	6	0	0	6
Orthoptists	0	0	0	0	0	0
Paramedics	4	0	12	0	0	16
Physiotherapists	1	1	11	0	0	13
Practitioner psychologists	3	0	7	0	0	10
Prosthetists & orthotists	0	0	1	0	0	1
Radiographers	1	0	2	1	0	4
SLTs	2	0	1	0	0	3
<b>Total YTD</b>	<b>16</b>	<b>1</b>	<b>47</b>	<b>5</b>	<b>0</b>	<b>69</b>

2007/2008 FYE	2008/2009 FYE	2009/10 FYE	2010/11 YTD
11	6	4	0
14	42	26	5
31	31	53	6
6	7	3	0
9	5	7	0
29	40	60	5
24	30	49	6
2	1	0	0
62	72	115	16
56	75	93	13
<b>0</b>	<b>0</b>	<b>38</b>	<b>10</b>
4	2	4	1
41	32	34	4
10	20	13	3
<b>299</b>	<b>363</b>	<b>499</b>	<b>69</b>

**By source of allegation**

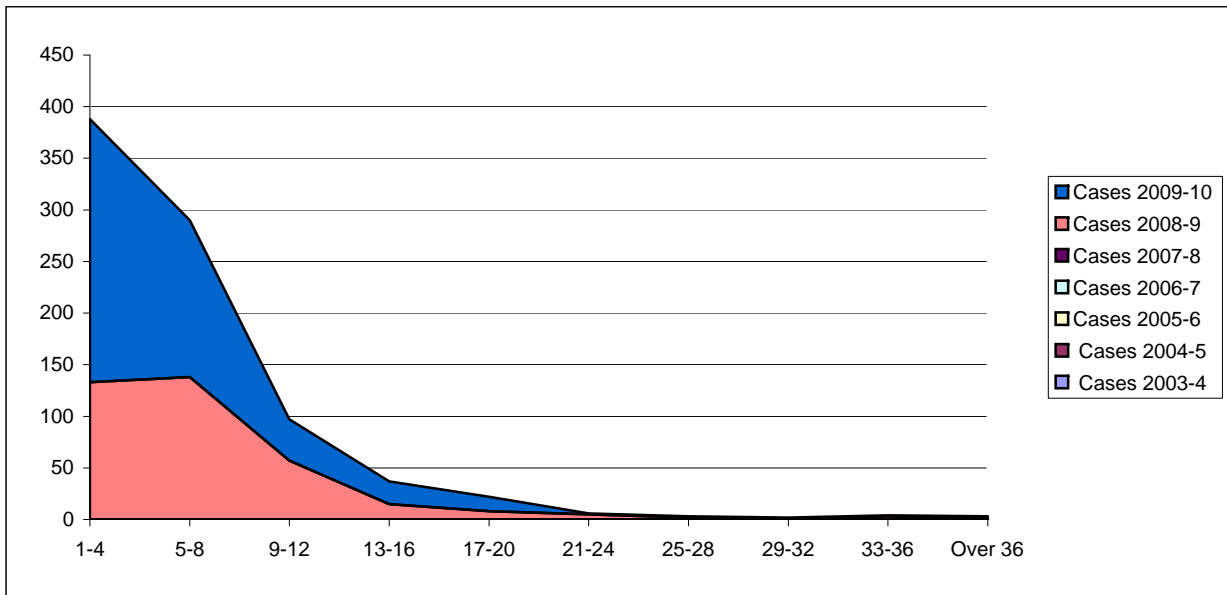
	No Case to Answer	Case to answer				Total YTD
		FI	CCC	HC	IC	
Employer	5	1	23	3	0	32
Public	5	0	5	0	0	10
Police	1	0	3	0	0	4
Professional body	0	0	0	0	0	0
Registrant	2	0	3	0	0	5
Other	1	0	1	0	0	2
Article 22(6)/Anon	2	0	12	2	0	16
<b>Total YTD</b>	<b>16</b>	<b>1</b>	<b>47</b>	<b>5</b>	<b>0</b>	<b>69</b>

2008/2009 FYE	2009/10 FYE	2010/11 YTD
176	211	32
78	140	10
30	29	4
2	2	0
12	32	5
19	15	2
46	70	16

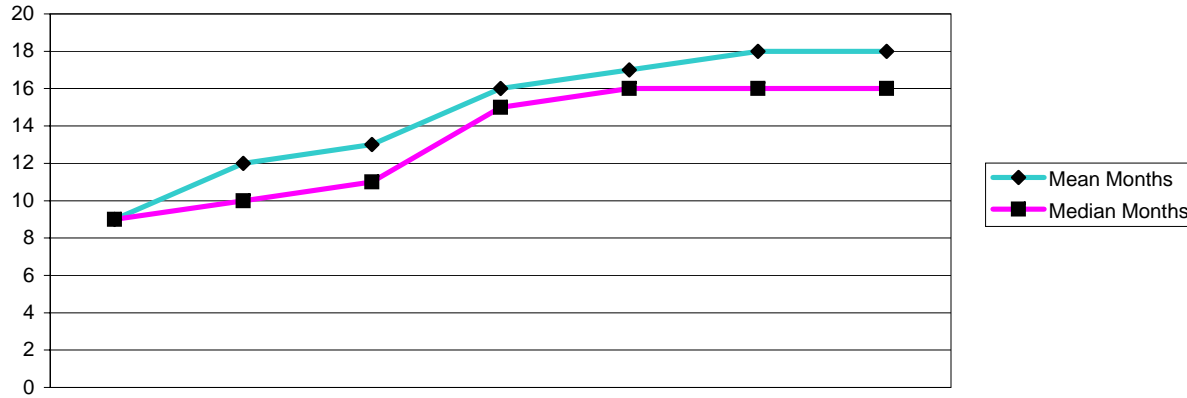
		Month of Panel																							
		2009												2010										2011	
Months		Apr	May	Jun	Jul	Aug	Sep	Oct	Nov	Dec	Jan	Feb	Mar	Apr	May	Jun	Jul	Aug	Sep	Oct	Nov	Dec	Jan	Feb	Mar
Cases awaiting ICP	0-4	122	139	137	171	193	197	209	191	191	175	200	204	175											
	5-8	50	42	42	43	37	41	47	57	69	67	61	63	62											
	9-12	14	16	17	23	21	18	16	15	12	20	19	25	27											
	13-16	10	7	9	8	7	9	9	12	13	9	10	5	6											
	17-20	2	3	1	2	3	4	3	3	3	5	5	5	5											
	21-24	1	1	0	0	0	0	0	0	1	1	1	1	1											
	25-28	2	1	1	0	0	0	0	0	0	0	0	0	1											
	29-32	1	1	1	2	1	1	1	0	0	0	0	0	0											
	over 33	2	1	1	0	1	1	1	1	1	0	0	0	0											
Cases awaiting final hearing (from ICP)	1-4	80	85	95	91	99	91	97	104	111	118	132	121	152											
	5-8	54	53	61	47	44	49	54	68	62	71	67	71	78											
	9-12	18	22	25	29	41	26	34	21	19	20	18	32	33											
	13-16	21	21	17	14	8	12	12	16	22	12	14	10	7											
	17-20	14	17	12	10	5	6	8	6	3	2	3	2	7											
	21-24	0	0	4	5	9	9	7	6	3	4	4	5	2											
	25-28	2	0	1	1	1	1	2	2	3	2	1	0	1											
	29-32	0	1	1	1	1	0	0	0	0	0	0	1	1											
	over 33	0	0	0	0	0	1	0	0	0	0	0	0	0											

NB for 2008-9 the figures were recorded in weeks, from April 2009 they are recorded in months



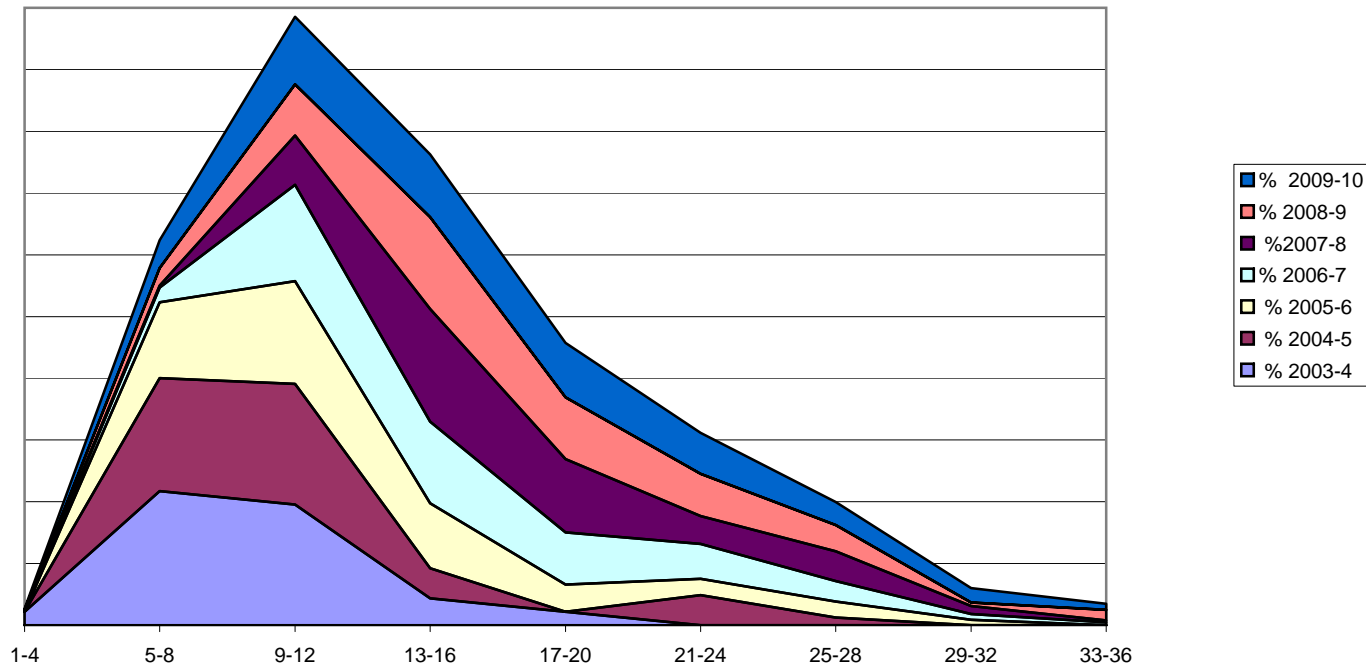


Number of Months	Cases 2003-4	Cases 2004-5	Cases 2005-6	Cases 2006-7	Cases 2007-8	Cases 2008-9	Cases 2009-10	Cases 2010-11 YTD
1-4						133	255	33
5-8						138	152	26
9-12						57	40	9
13-16						15	22	0
17-20						8	14	0
21-24						5	1	0
25-28						2	1	0
29-32						1	1	0
33-36						3	1	0
Over 36			Not available			1	2	0
<b>Mean Months</b>						<b>7</b>	<b>6</b>	<b>5</b>
<b>Median Months</b>						<b>5</b>	<b>4</b>	<b>5</b>
<b>Total Cases</b>						<b>363</b>	<b>489</b>	<b>78</b>



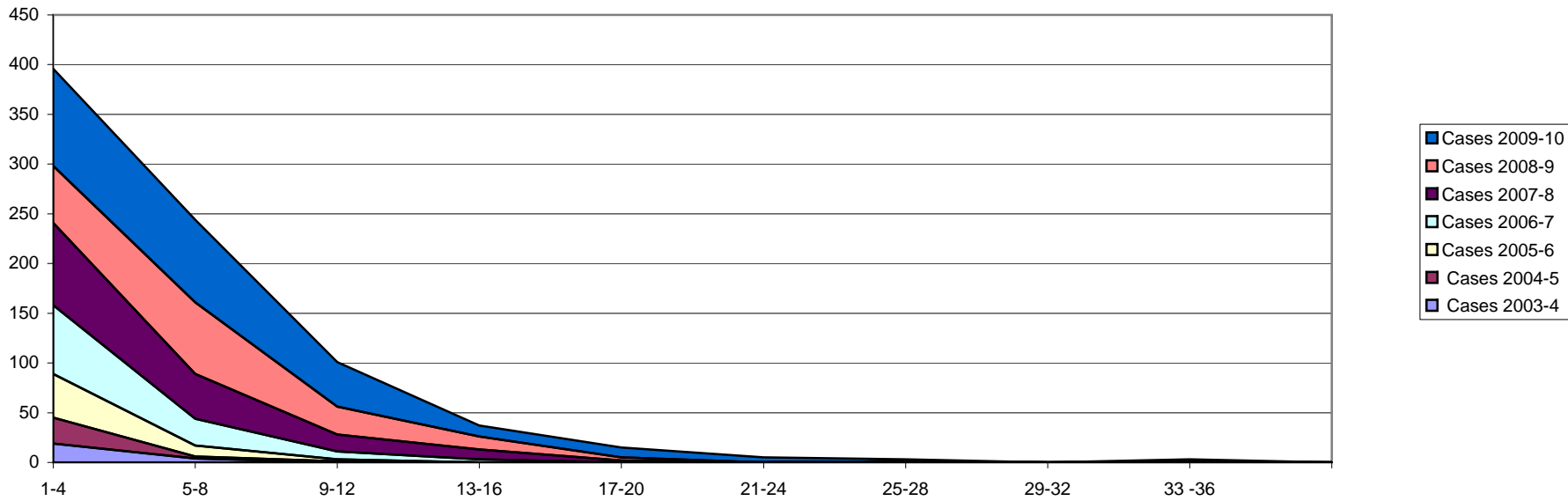
Number of Months	Cases 2003-4	Cases 2004-5	Cases 2005-6	Cases 2006-7	Cases 2007-8	Cases 2008-9	Cases 2009-10	Cases 2010-11YTD
1-4	1	0	0	0	1	0	1	0
5-8	10	15	14	5	1	10	23	3
9-12	9	16	19	33	25	29	56	4
13-16	2	4	12	28	57	52	52	5
17-20	1	0	5	18	37	35	45	2
21-24	0	4	3	12	14	24	34	2
25-28	0	1	3	7	15	15	19	1
29-32	0	0	1	2	4	2	12	1
33-36	0	0	0	1	1	6	5	3
Over 36	0	0	0	0	0	2	9	2
<b>Mean Months</b>	<b>9</b>	<b>12</b>	<b>13</b>	<b>16</b>	<b>17</b>	<b>18</b>	<b>18</b>	<b>20</b>
<b>Median Months</b>	<b>9</b>	<b>10</b>	<b>11</b>	<b>15</b>	<b>16</b>	<b>16</b>	<b>16</b>	<b>16</b>
<b>Total Cases</b>	<b>23</b>	<b>41</b>	<b>57</b>	<b>106</b>	<b>156</b>	<b>175</b>	<b>256</b>	<b>23</b>

**Allegations made - conclusion of final hearing (percentages)**



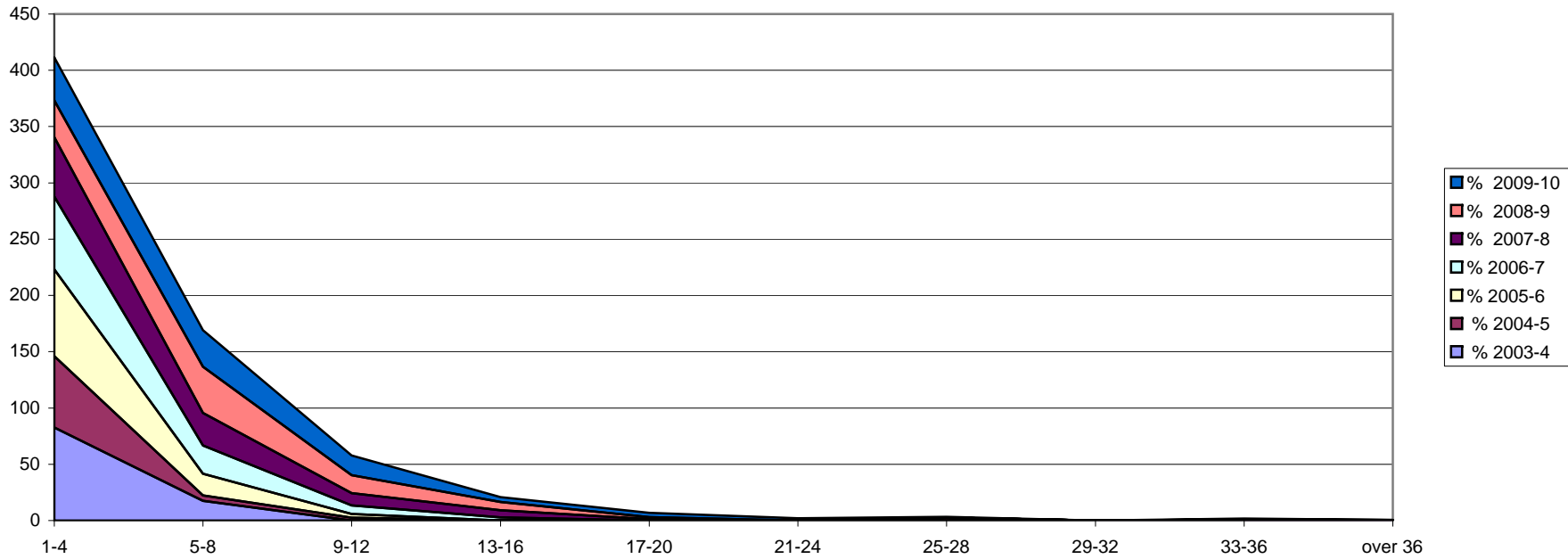
Number of Months	% 2003-4	% 2004-5	% 2005-6	% 2006-7	% 2007-8	% 2008-9	% 2009-10	% 2010YTD
1-4	4.3	0.0	0.0	0.0	0.6	0.0	0.4	0.0
5-8	43.5	36.6	24.6	4.7	0.6	5.7	9.0	1.2
9-12	39.1	39.0	33.3	31.1	16.0	16.6	21.9	1.6
13-16	8.7	9.8	21.1	26.4	36.5	29.7	20.3	2.0
17-20	4.3	0.0	8.8	17.0	23.7	20.0	17.6	0.8
21-24	0	9.8	5.3	11.3	9.0	13.7	13.3	0.8
25-28	0	2.4	5.3	6.6	9.6	8.6	7.4	0.4
29-32	0	0.0	1.8	1.9	2.6	1.1	4.7	0.4
33-36	0	0.0	0.0	0.9	0.6	3.4	2.0	1.2
Over 36	0	0.0	0.0	0.9	0.6	1.1	3.5	0.8

Allegations made - Investigating Panel (concluded final hearing cases) 2003-4 to 2010-11



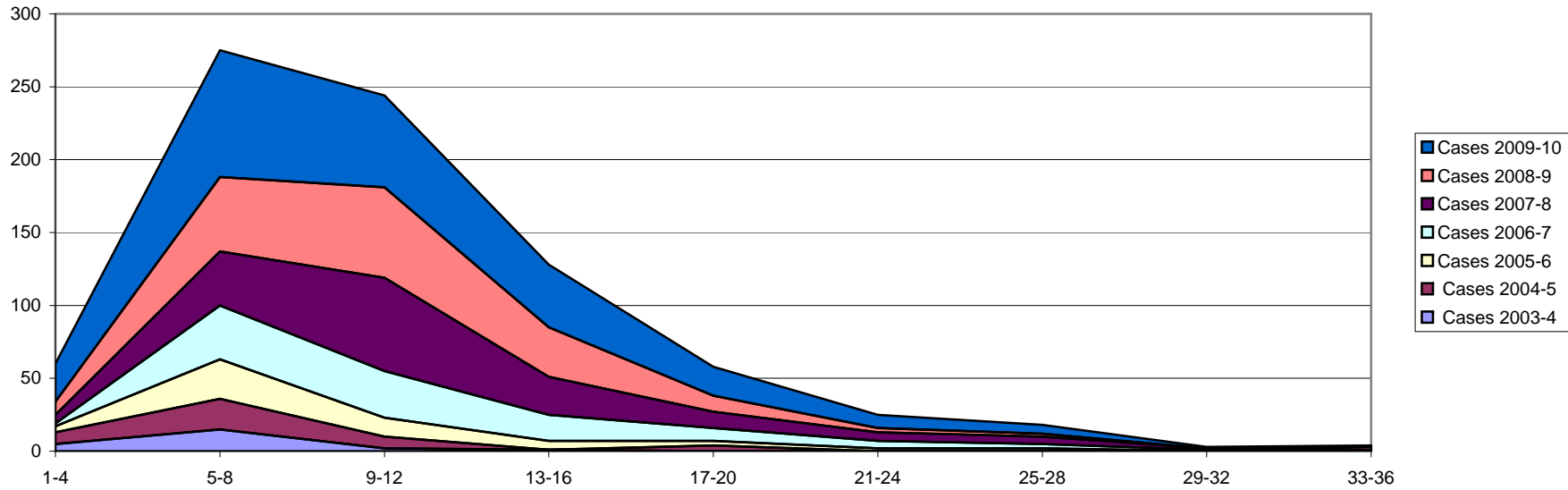
Number of Months	Cases 2003-4	Cases 2004-5	Cases 2005-6	Cases 2006-7	Cases 2007-8	Cases 2008-9	Cases 2009-10	Cases 2010-11 YTD
1-4	19	26	44	69	83	57	98	8
5-8	4	2	11	27	45	72	83	7
9-12	0	1	2	8	17	28	45	5
13-16	0	0	0	3	10	13	11	0
17-20	0	0	0	0	2	3	10	0
21-24	0	0	0	0	0	0	5	1
25-28	0	1	0	0	0	0	2	0
29-32	0	0	0	0	0	0	0	1
33 -36	0	0	0	0	0	1	2	1
over 36	0	0	0	0	0	0	0	0
<b>Mean Months</b>	<b>3</b>	<b>4</b>	<b>3</b>	<b>4.5</b>	<b>6</b>	<b>7</b>	<b>7</b>	<b>9</b>
<b>Median Months</b>	<b>3</b>	<b>3</b>	<b>3</b>	<b>3</b>	<b>4</b>	<b>6</b>	<b>5</b>	<b>6</b>
<b>Total Cases</b>	<b>23</b>	<b>41</b>	<b>57</b>	<b>107</b>	<b>157</b>	<b>175</b>	<b>256</b>	<b>23</b>

**Allegations made - Investigating Panel percentages**



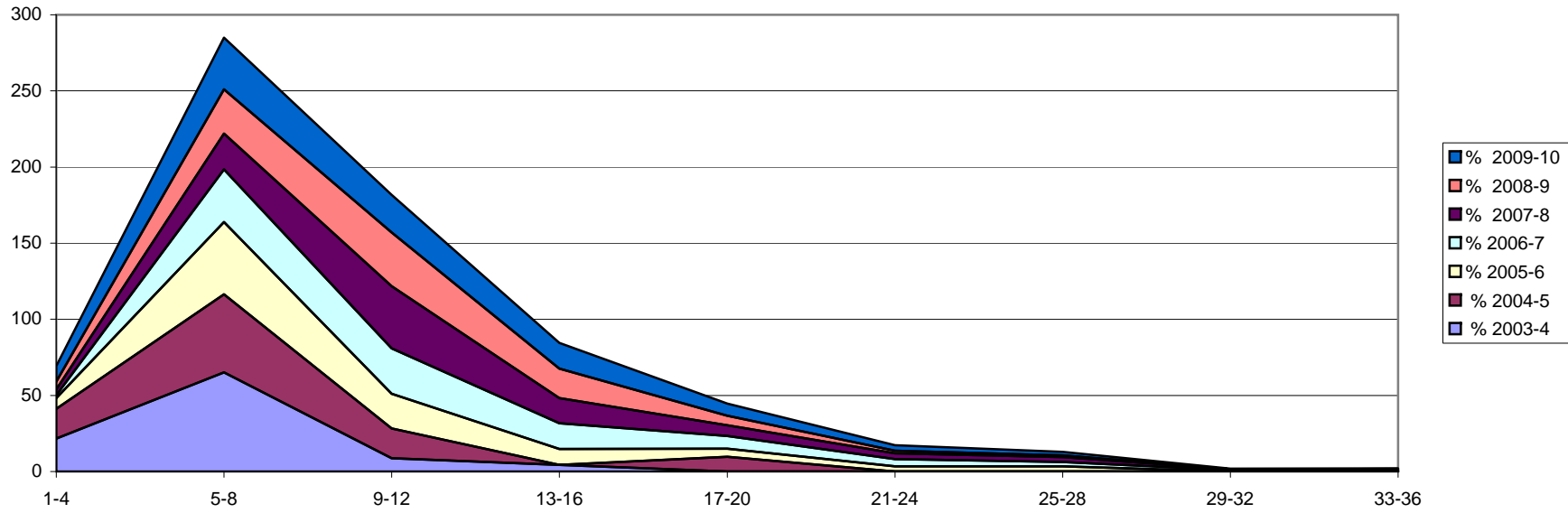
Number of Months	% 2003-4	% 2004-5	% 2005-6	% 2006-7	% 2007-8	% 2008-9	% 2009-10	% 2010 YTD
1-4	83	63	77	64	53	33	38	3
5-8	17	5	19	25	29	41	32	3
9-12	0	2	4	7	11	16	18	2
13-16	0	0	0	3	6	7	4	0
17-20	0	0	0	0	1	2	4	0
21-24	0	0	0	0	0	0	2	0
25-28	0	2	0	0	0	0	1	0
29-32	0	0	0	0	0	0	0	0
33-36	0	0	0	0	0	1	1	0
over 36	0	0	0	0	0	1	0	0

**Investigating Panel - Case Conclusion (concluded final hearing cases)**



Number of Months	Cases 2003-4	Cases 2004-5	Cases 2005-6	Cases 2006-7	Cases 2007-8	Cases 2008-9	Cases 2009-10	Cases 2010-11YTD
1-4	5	8	4	2	6	9	26	3
5-8	15	21	27	37	37	51	87	7
9-12	2	8	13	32	64	62	63	6
13-16	1	0	6	18	26	34	43	4
17-20	0	4	3	9	11	11	20	0
21-24	0	0	2	5	6	3	9	1
25-28	0	0	2	3	5	2	6	2
29-32	0	0	0	1	1	0	1	0
33-36	0	0	0	0	1	2	1	0
Over 36	0	0	0	0	0	1	0	0
<b>Mean Months</b>	<b>6</b>	<b>8</b>	<b>10</b>	<b>11.5</b>	<b>12</b>	<b>11</b>	<b>11</b>	<b>11</b>
<b>Median Months</b>	<b>5</b>	<b>7</b>	<b>8</b>	<b>10</b>	<b>11</b>	<b>10</b>	<b>9</b>	<b>9</b>
<b>Total Cases</b>	<b>23</b>	<b>41</b>	<b>57</b>	<b>107</b>	<b>157</b>	<b>175</b>	<b>256</b>	<b>23</b>

### Investigating Panel - Case Conclusion percentages

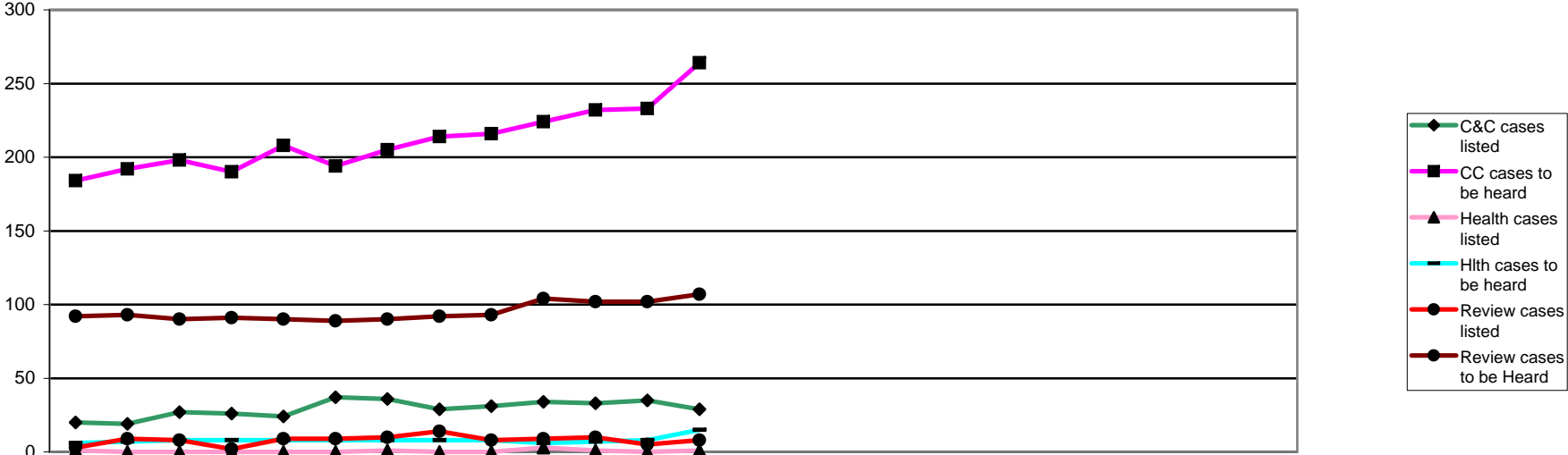


Number of Months	% 2003-4	% 2004-5	% 2005-6	% 2006-7	% 2007-8	% 2008-9	% 2009-10	% 2010 YTD
1-4	22	20	7	2	4	5	10	1
5-8	65	51	47	35	24	29	34	3
9-12	9	20	23	30	41	35	25	2
13-16	4	0	11	17	17	19	17	2
17-20	0	10	5	8	7	6	8	0
21-24	0	0	4	5	4	2	4	0
25-28	0	0	4	3	3	1	2	1
29-32	0	0	0	1	1	0	0	0
33-36	0	0	0	0	1	1	0	0
Over 36	0	0	0	0	1	1	0	0

	Applications Considered	Applications Granted	Applications Not Granted	Reviewed	Revoked
Arts therapists	0	0	0	0	0
Biomedical scientists	0	0	0	0	0
Chiropodists & podiatrists	0	0	0	0	0
Clinical scientists	0	0	0	0	0
Dietitians	0	0	0	0	0
Hearing aid dispensers	1	1	0	1	1
Occupational therapists	0	0	0	1	0
ODPs	2	2	0	1	0
Orthoptists	0	0	0	0	0
Paramedics	1	1	0	2	0
Physiotherapists	0	0	0	1	0
Practitioner psychologists	0	0	0	0	0
Prosthetists & orthotists	0	0	0	0	0
Radiographers	0	0	0	0	0
SLTs	0	0	0	1	0
<b>Total</b>	<b>4</b>	<b>4</b>	<b>0</b>	<b>7</b>	<b>1</b>

Hearings held 2007/8 FYE	Hearings held 2008/9 FYE	Hearings held 2009/10 FYE	Hearings held 2010/11 YTD
4	4	2	0
8	16	8	0
6	5	13	0
4	0	0	0
0	0	0	0
			2
3	6	9	1
18	18	20	3
0	0	0	0
16	14	46	3
8	13	20	1
			3
0	0	0	0
7	6	12	0
0	3	8	1
<b>74</b>	<b>85</b>	<b>141</b>	<b>11</b>





Panel Hearings Decisions: Conduct and Competence Cases

		2009			2010									2011			2005/6	2006/7	2007/8	2008/9	09/10	10/11														
		Apr	May	Jun	Jul	Aug	Sep	Oct	Nov	Dec	Jan	Feb	Mar	Apr	May	Jun	Jul	Aug	Sep	Oct	Nov	Dec	Jan	Feb	Mar	FYE	FYE	FYE	FYE	FYE	YTD					
Conduct & Competence Committee	C&C cases listed	20	19	27	26	24	37	36	29	31	34	33	35	29														73	119	176	231	351	29			
	Struck off	0	4	9	3	10	10	5	9	1	3	3	8	5															11	26	37	64	65	5		
	Suspended	4	2	1	4	1	6	5	7	4	3	0	1	3															19	19	30	23	38	3		
	Conditions of practice	1	2	0	1	0	2	1	3	1	0	3	0	3															5	5	7	10	14	3		
	Caution	6	2	3	8	4	0	3	1	6	6	1	6	1															8	32	28	24	46	1		
	No further action	2	0	1	1	0	3	0	0	0	0	0	0	0															4	6	4	7	7	0		
	Not well founded	3	4	3	4	3	5	9	2	10	8	10	9	9																	0	19	36	70	9	9
	Adjourned/part heard	3	5	10	5	6	7	10	5	9	8	12	10	6															22	22	32	35	90	6		
	Cancelled	0	0	0	0	0	4	1	1	0	5	1	0	1																	0	24	21	12	1	1
	Referred to Health	0	0	0	0	0	0	1	0	0	1	0	0	0																1	0	1	0	2	0	
	Removed - consent	1	0	0	0	0	0	1	1	0	0	3	1	1																					1	1
CC cases to be heard	184	192	198	190	208	194	205	214	216	224	232	233	264																59	59	172	117	233	264		

Panel Hearings Decisions: Health and Investigating Hearings

Fitness to Practise Department

		2009			2010									2011									2005/6	2006/7	2007/8	2008/9	09/10	10/11			
		Apr	May	Jun	Jul	Aug	Sep	Oct	Nov	Dec	Jan	Feb	Mar	Apr	May	Jun	Jul	Aug	Sep	Oct	Nov	Dec	Jan	Feb	Mar	FYE	FYE	FYE	FYE	FYE	YTD
Health Committee	Health cases listed	1	0	0	0	0	0	1	0	0	3	1	0	1												8	7	9	2	6	1
	Suspended	1	0	0	0	0	0	0	0	0	1	0	0	0												2	2	5	1	2	0
	Conditions of practice	0	0	0	0	0	0	0	0	0	1	0	0	0												3	1	0	1	1	0
	Caution	0	0	0	0	0	0	0	0	0	0	0	0	0												0	0	0	0	0	0
	No further action	0	0	0	0	0	0	0	0	0	0	0	0	0												0	1	0	0	0	0
	Not well founded	0	0	0	0	0	0	1	0	0	1	1	0	0														1	1	3	0
	Adjourned/part heard	0	0	0	0	0	0	0	0	0	0	0	0	1														1	0	0	1
	Cancelled	0	0	0	0	0	0	0	0	0	0	0	0	0														2	0	0	0
	Referred to C&C	0	0	0	0	0	0	0	0	0	0	0	0	0														0	0	0	0
	Hlth cases to be heard	6	7	8	8	8	8	8	8	8	6	7	8	15												7	7	4	5	8	15
Investigating	Removed	1	1	0	0	0	0	0	0	0	0	1	0																	3	0
	Amended	0	0	0	0	0	0	0	0	0	0	1	0																	1	0
	Not well found	0	0	0	0	0	0	0	0	0	0	0	0																	0	0
	No further action	1	0	0	0	0	0	0	0	0	0	0	0																	1	0
	Adjourned/part heard	0	0	0	0	0	0	0	0	0	0	0	0																	0	0
Investigating Committee cases to be heard	0	0	0	0	0	0	0	0	0	0	0	1	2																	1	2

## Panel Hearings, Decisions: Review Hearings

## Fitness to Practise Department

	2009												2010												2011												2005/6	2006/7	2007/8	2008/9	09/10	10/11												
	Apr	May	Jun	Jul	Aug	Sep	Oct	Nov	Dec	Jan	Feb	Mar	Apr	May	Jun	Jul	Aug	Sep	Oct	Nov	Dec	Jan	Feb	Mar	Apr	May	Jun	Jul	Aug	Sep	Oct	Nov	Dec	Jan	Feb	Mar	FYE	FYE	FYE	FYE	FYE	YTD												
CCC and HC Review Hearings	Review cases listed	3	9	8	2	9	9	10	14	8	9	10	5	8																							41	67	67	67	8													
	Struck off	2	5	3	1	1	1	2	7	3	3	3		1																								10	31	31	1													
	Suspension continued	1	3	4	0	4	3	4	4	2	3	3	4	2																								37	31	35	2													
	Conditions continued	0	0	1	0	0	3	0	0	2	0	1	0	0																									2	7	7	0												
	Suspension revoked	0	0	0	0	3	0	2	1	0	1	1	0	0																										2	8	8	0											
	Suspension revoked conditions imposed	0	0	0	0	0	1	1	0	1	1	0	0	1																											1	4	4	1										
	Suspension revoked caution imposed	0	0	0	0	0	0	0	0	0	0	0	1	1																												0	0	1	1									
	Conditions revoked	0	1	0	0	1	1	0	1	0	0	1	0	2																												5	5	5	2									
	Conditions revoked suspension imposed	0	0	0	0	0	0	0	1	0	0	0	0	0																														5	1	1	0							
	Conditions revoked caution imposed	0	0	0	1	0	0	0	0	0	0	0	0	0																															1	1	1	0						
	Vol Removal (Consent)	0	0	0	0	0	0	1	0	0	0	1	0	0																																0			0					
	Adjourned/part heard	0	0	0	0	0	0	0	0	0	0	0	0	1																																		3	0	0	1			
	Cancelled	0	0	0	0	0	0	0	0	0	1	0	0	0																																				1	0			
	Review cases to be Heard	92	93	90	91	90	89	90	92	93	104	102	102	107																																				69	90	90	102	107

## Representation

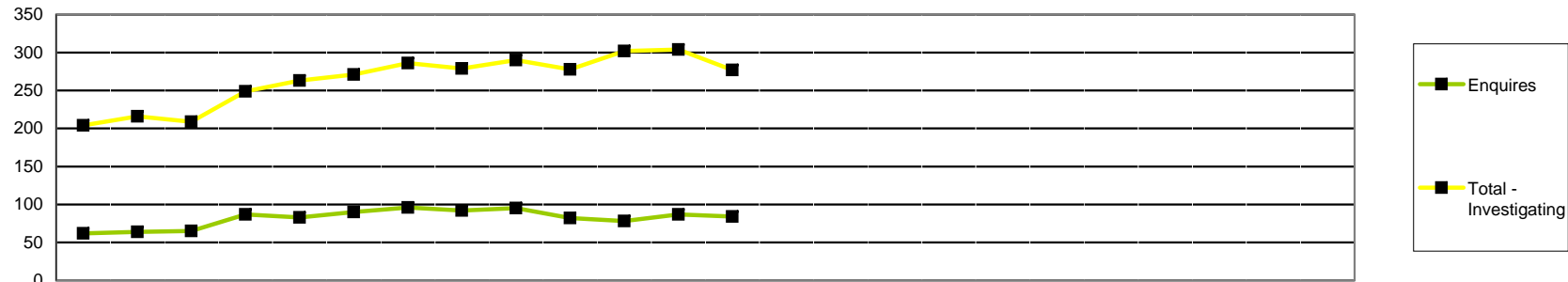
Final Hearings-CCC														2009/10 FYE	2010/11 YTD	
Struck off	Suspended	Conditions of Practice	Caution	No Further Action	Not Well Founded	NR	Referred to Health	Removed	Register entry amended	Restored	Not restored	Vol Removal (Consent)	Part Heard			
Represented self	0	0	0	0	0	1	0	0	0	0	0	0	0	0	44	1
Representative	0	2	3	1	0	7	0	0	0	0	0	0	0	0	115	13
None	5	1	1	0	0	1	0	0	0	0	0	0	1	1	98	10
<b>Total</b>	<b>5</b>	<b>3</b>	<b>4</b>	<b>1</b>	<b>0</b>	<b>9</b>	<b>0</b>	<b>0</b>	<b>0</b>	<b>0</b>	<b>0</b>	<b>0</b>	<b>1</b>	<b>1</b>	<b>257</b>	<b>24</b>

Profession	Represented self	Representative	None	% of representation
Arts therapists	0	0	0	0
Biomedical scientists	0	0	1	0
Chiropodists & podiatrists	0	1	0	100
Clinical scientists	0	0	0	0
Dietitians	0	0	0	0
Hearing aid dispensers	0	0	0	0
Occupational therapists	0	3	1	75
ODPs	0	1	1	50
Orthoptists	0	0	0	0
Paramedics	1	2	1	75
Physiotherapists	0	3	5	38
Practitioner psychologists	0	0	1	0
Prosthetists & orthotists	0	1	0	100
Radiographers	0	2	0	100
SLTs	0	0	0	0

The above tables do not include cases that were adjourned, postponed or cancelled

	Final Hearings													
	Struck off	Suspended	Conditions of Practice	Caution	No Further Action	Not Well Founded	NR	Referred to Health	Removed	Register entry amended	Restored	Not restored	Part Heard	
Arts therapists	0	0	0	0	0	0	0	0	0	0	0	0	0	
Biomedical scientists	1	0	0	0	0	0	0	0	0	0	0	0	0	
Chiropodists & podiatrists	0	0	0	0	0	1	0	0	0	0	0	0	0	
Clinical scientists	0	0	0	0	0	0	0	0	0	0	0	0	0	
Dietitians	0	0	0	0	0	0	0	0	0	0	0	0	0	
Hearing aid dispensers	0	0	0	0	0	0	0	0	0	0	0	0	0	
Occupational therapists	0	1	2	0	0	1	0	0	0	0	0	0	0	
ODPs	1	0	0	0	0	1	0	0	0	0	0	0	0	
Orthoptists	0	0	0	0	0	0	0	0	0	0	0	0	0	
Paramedics	0	2	0	1	0	1	0	0	0	0	0	0	0	
Physiotherapists	3	0	0	0	0	4	0	0	0	0	0	0	0	
Practitioner psychologists	0	0	0	0	0	0	0	0	0	0	0	0	1	
Prosthetists & orthotists	0	0	1	0	0	0	0	0	0	0	0	0	0	
Radiographers	0	0	1	0	0	1	0	0	0	0	0	0	0	
SLTs	0	0	0	0	0	0	0	0	0	0	0	0	0	
<b>Total 2010/11 YTD</b>	<b>5</b>	<b>3</b>	<b>4</b>	<b>1</b>	<b>0</b>	<b>9</b>	<b>0</b>	<b>0</b>	<b>0</b>	<b>0</b>	<b>0</b>	<b>0</b>	<b>1</b>	
<b>Total 2009/10 FYE</b>	<b>64</b>	<b>40</b>	<b>15</b>	<b>46</b>	<b>3</b>	<b>76</b>	<b>0</b>	<b>2</b>	<b>3</b>	<b>1</b>	<b>0</b>	<b>0</b>	<b>7</b>	

	Review Hearings										
	Struck off	Suspension continued	Suspension revoked	Suspension revoked caution imposed	Suspension revoked conditions imposed	Conditions continued	Conditions revoked	Conditions revoked caution imposed	Conditions revoked suspension imposed	Adjourned/Part Heard	Vol Removal (Consent)
Arts therapists	0	0	0	0	0	0	0	0	0	0	0
Biomedical scientists	0	1	0	0	0	0	0	0	0	0	0
Chiropodists & podiatrists	0	0	0	0	0	0	0	0	0	0	0
Clinical scientists	0	0	0	0	0	0	0	0	0	0	0
Dietitians	0	0	0	0	0	0	0	0	0	0	0
Hearing aid dispensers	0	0	0	0	0	0	0	0	0	0	0
Occupational therapists	0	0	0	0	0	0	0	0	0	0	0
ODPs	0	0	0	0	0	0	0	0	0	0	0
Orthoptists	0	0	0	0	0	0	0	0	0	0	0
Paramedics	0	0	0	1	0	0	1	0	0	0	0
Physiotherapists	0	0	0	0	1	0	0	0	0	0	0
Practitioner psychologists	0	0	0	0	0	0	0	0	0	0	0
Prosthetists & orthotists	0	0	0	0	0	0	0	0	0	0	0
Radiographers	1	1	0	0	0	0	1	0	0	0	0
SLTs	0	0	0	0	0	0	0	0	0	1	0
<b>Total 2010/11 YTD</b>	<b>1</b>	<b>2</b>	<b>0</b>	<b>1</b>	<b>1</b>	<b>0</b>	<b>2</b>	<b>0</b>	<b>0</b>	<b>1</b>	<b>0</b>
<b>Total 2009/10 YTD</b>	<b>1</b>	<b>2</b>	<b>0</b>	<b>1</b>	<b>1</b>	<b>0</b>	<b>2</b>	<b>0</b>	<b>0</b>	<b>1</b>	<b>0</b>
<b>Total 2008/2009 YTD</b>	<b>16</b>	<b>51</b>	<b>8</b>	<b>2</b>	<b>3</b>	<b>3</b>	<b>1</b>	<b>0</b>	<b>0</b>	<b>3</b>	<b>0</b>
<b>Total 2007/2008 FYE</b>	<b>8</b>	<b>25</b>	<b>2</b>	<b>0</b>	<b>0</b>	<b>3</b>	<b>0</b>	<b>0</b>	<b>0</b>	<b>4</b>	<b>0</b>

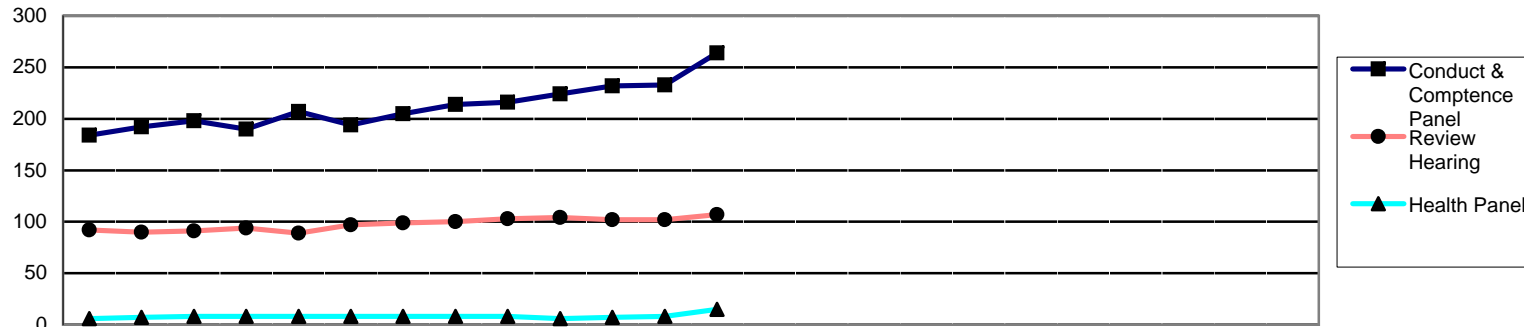


	2009			2010									2011												
	Apr	May	Jun	Jul	Aug	Sep	Oct	Nov	Dec	Jan	Feb	Mar	Apr	May	Jun	Jul	Aug	Sep	Oct	Nov	Dec	Jan	Feb	Mar	
<b>Enquires</b>																									
Arts therapists	0	0	0	0	1	0	1	0	0	0	0	0	0												0
Biomedical scientists	2	2	3	2	5	8	9	9	7	5	4	6	7												7
Chiropodists & podiatrists	4	4	2	5	4	6	7	5	6	4	4	5	5												5
Clinical scientists	1	1	1	1	1	0	1	0	0	0	0	0	0												0
Dietitians	6	6	5	5	1	2	2	2	2	2	2	2	2												2
Hearing aid dispensers+																									3
Occupational therapists	10	15	15	10	11	8	11	9	11	8	8	14	14												14
ODPs	12	8	8	8	7	8	5	5	4	3	3	0	0												0
Orthoptists	0	0	0	0	0	0	0	0	0	0	0	1	1												1
Paramedics	11	13	13	15	15	18	16	16	14	12	13	13	14												14
Physiotherapists	12	11	12	9	7	11	18	17	19	16	15	14	11												11
Practitioner psychologists*				26	24	20	15	16	16	22	19	22	19												19
Prosthetists & orthotists	1	0	1	0	0	0	0	0	0	0	0	0	0												0
Radiographers	2	3	3	3	2	4	6	7	7	5	7	6	4												4
SLTs	1	1	2	3	5	5	5	6	9	5	3	4	4												4
<b>Total - Enquiries</b>	<b>62</b>	<b>64</b>	<b>65</b>	<b>87</b>	<b>83</b>	<b>90</b>	<b>96</b>	<b>92</b>	<b>95</b>	<b>82</b>	<b>78</b>	<b>87</b>	<b>84</b>												
<b>Investigating Panel</b>																									
Arts therapists	1	1	1	3	2	4	3	2	2	1	1	1	3												3
Biomedical scientists	11	10	10	12	10	11	13	11	15	12	16	21	17												17
Chiropodists & podiatrists	25	26	28	28	29	25	24	26	25	25	28	27	25												25
Clinical scientists	4	4	3	3	3	4	4	4	3	4	6	5	5												5
Dietitians	1	1	2	3	7	5	5	1	1	1	4	7	8												8
Hearing aid dispensers+													5												5
Occupational therapists	33	33	29	34	33	40	38	29	29	30	28	25	25												25
ODPs	27	29	20	16	14	13	11	15	16	20	20	20	19												19
Orthoptists	0	0	0	0	0	0	0	0	0	0	0	1	1												1
Paramedics	37	44	50	65	63	57	68	67	69	65	65	68	58												58
Physiotherapists	46	47	45	43	46	49	52	56	52	51	51	47	40												40
Practitioner psychologists*				19	30	36	43	44	52	45	55	53	45												45
Prosthetists & orthotists	2	2	2	2	2	4	4	3	2	2	2	4	3												3
Radiographers	13	14	13	15	16	13	14	15	14	10	12	15	15												15
SLTs	4	5	6	6	8	10	7	6	10	12	14	10	8												8
<b>Total - Investigating</b>	<b>204</b>	<b>216</b>	<b>209</b>	<b>249</b>	<b>263</b>	<b>271</b>	<b>286</b>	<b>279</b>	<b>290</b>	<b>278</b>	<b>302</b>	<b>304</b>	<b>277</b>												

2005/6	2006/7	2007/8	2008/9	09/10	10/11
FYE	FYE	FYE	FYE	FYE	YTD
				0	0
				6	7
				5	5
				0	0
				2	2
					3
				14	14
				0	0
				1	1
				13	14
				14	11
				22	19
				0	0
				6	4
				4	4
				87	84
2	3	1	1	1	3
5	10	13	14	21	17
24	26	18	27	27	25
3	4	3	4	5	5
1	3	4	0	7	8
					5
14	19	22	29	25	25
14	15	18	26	20	19
0	1	1	0	1	1
19	47	40	35	68	58
50	55	43	39	47	40
				53	45
2	3	2	2	4	3
18	32	17	12	15	15
6	10	16	5	10	8
158	228	198	194	304	277

\* Practitioner psychologists section of register opened 1st July 2009

+ Hearing aid dispensers section of register opened 1st April 2010



	2009			2010									2011											
	Apr	May	Jun	Jul	Aug	Sep	Oct	Nov	Dec	Jan	Feb	Mar	Apr	May	Jun	Jul	Aug	Sep	Oct	Nov	Dec	Jan	Feb	Mar
<b>Conduct &amp; Competence Panel</b>																								
Arts therapists	12	13	6	6	7	3	4	2	2	3	3	2												2
Biomedical scientists	15	16	16	13	14	11	11	11	12	12	13	14												15
Chiropodists & podiatrists	16	15	17	18	18	17	18	18	20	22	22	22												22
Clinical scientists	4	4	3	3	3	3	3	3	3	3	2	3												3
Dietitians	2	2	2	2	2	3	3	3	2	1	1	1												1
Hearing aid dispensers+																								8
Occupational therapists	26	27	26	27	27	22	28	30	27	25	24	25												24
ODPs	19	22	25	25	23	22	20	17	18	18	20	19												23
Orthoptists	1	1	1	0	1	0	0	0	0	0	0	0												0
Paramedics	40	40	43	46	47	48	50	57	58	62	67	63												71
Physiotherapists	29	30	34	27	32	30	29	29	32	34	39	40												44
Practitioner psychologists*				0	10	7	7	9	11	13	14	15												21
Prosthetists & orthotists	1	1	1	1	1	1	1	2	2	2	1	2												2
Radiographers	11	14	16	16	17	22	24	25	23	23	20	17												17
SLTs	8	7	8	6	5	5	7	8	6	6	6	10												11
<b>Total - Conduct &amp; Competence</b>	<b>184</b>	<b>192</b>	<b>198</b>	<b>190</b>	<b>207</b>	<b>194</b>	<b>205</b>	<b>214</b>	<b>216</b>	<b>224</b>	<b>232</b>	<b>233</b>	<b>264</b>											

2005/6	2006/7	2007/8	2008/9	09/10	10/11
FYE	FYE	FYE	FYE	FYE	YTD
0	1	8	11	2	2
7	9	7	12	14	15
13	12	12	15	22	22
1	0	3	4	3	3
3	1	4	2	1	1
					8
12	19	19	25	25	24
8	9	18	15	19	23
0	0	0	1	0	0
29	40	45	40	63	71
14	16	28	30	40	44
				15	21
4	0	0	1	2	2
7	14	23	13	17	17
7	3	4	8	10	11
<b>105</b>	<b>124</b>	<b>171</b>	<b>177</b>	<b>233</b>	<b>264</b>

\* Practitioner psychologists section of register opened 1st July 2009

+ Hearing aid dispensers section of register opened 1st April 2010

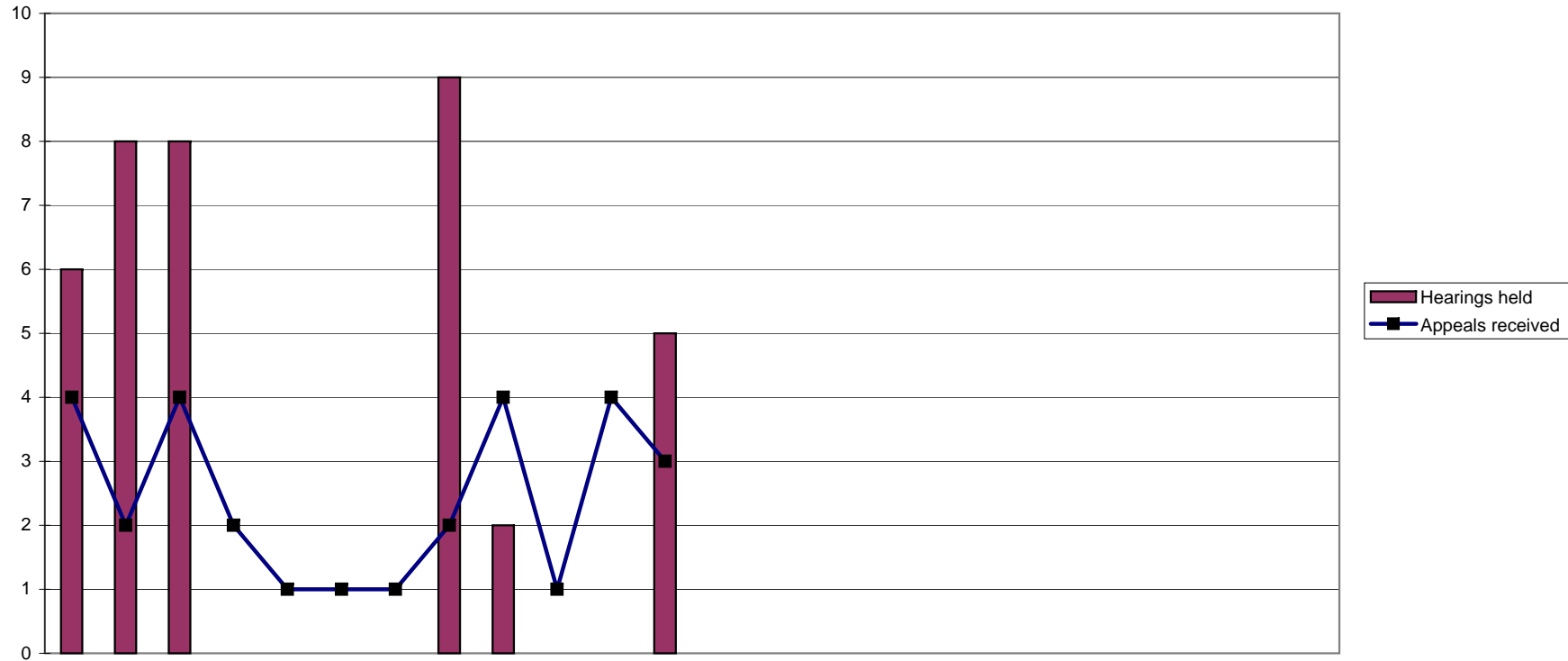
Cases Pending: Health Panel and Review Hearings April 2009 - March 2011

	2009			2010									2011			2005/6	2006/7	2007/8	2008/9	09/10	10/11									
	Apr	May	Jun	Jul	Aug	Sep	Oct	Nov	Dec	Jan	Feb	Mar	Apr	May	Jun	Jul	Aug	Sep	Oct	Nov	Dec	Jan	Feb	Mar	FYE	FYE	FYE	FYE	FYE	YTD
<b>Health Panel</b>																														
Arts therapists	0	0	0	0	0	0	0	0	0	0	0	0	0												0	0	0	0	0	0
Biomedical scientists	1	1	1	1	1	1	0	0	0	0	0	0	1												2	1	0	1	0	1
Chiropodists & podiatrists	1	1	1	1	1	1	1	1	1	0	0	0	3												0	0	0	0	0	3
Clinical scientists	0	0	0	0	0	0	0	0	0	0	0	0	0												0	0	0	0	0	0
Dietitians	0	0	0	0	0	0	0	0	0	0	0	0	0												0	0	0	0	0	0
Hearing aid dispensers+													0																	
Occupational therapists	1	0	0	0	0	1	1	1	1	2	2	3	5												2	2	0	1	3	5
ODPs	0	2	2	2	2	2	3	3	3	3	4	4	4												1	2	0	0	4	4
Orthoptists	0	0	0	0	0	0	0	0	0	0	0	0	0												0	0	1	0	0	0
Paramedics	0	0	1	1	1	1	0	0	0	0	0	0	0												0	1	0	0	0	0
Physiotherapists	1	1	1	1	1	1	2	2	2	1	1	1	1												2	0	0	1	1	1
Practitioner psychologists*				0	0	0	0	0	0	0	0	0	0																	
Prosthetists & orthotists	0	0	0	0	0	0	0	0	0	0	0	0	0												0	0	0	0	0	0
Radiographers	1	1	1	1	1	0	0	0	0	0	0	0	1												1	0	2	1	0	1
SLTs	1	1	1	1	1	1	1	1	1	0	0	0	0												0	0	1	1	0	0
<b>Total - Health</b>	6	7	8	8	8	8	8	8	8	6	7	8	15												8	6	4	5	8	15
<b>Review Hearing</b>																														
Arts therapists	0	0	0	0	0	0	0	0	0	0	0	0	0												0	0	0	0	0	0
Biomedical scientists	4	3	4	5	5	6	6	8	9	10	10	10	10												5	6	5	4	10	10
Chiropodists & podiatrists	5	6	6	5	5	5	5	5	5	4	4	4	4												3	5	5	5	4	4
Clinical scientists	2	2	2	2	2	2	2	1	1	1	1	1	1												1	2	2	2	1	1
Dietitians	3	3	3	3	3	3	2	1	1	1	1	1	1												2	4	2	3	1	1
Hearing aid dispensers+													1																	
Occupational therapists	16	15	16	17	16	17	16	16	16	16	15	16	19												5	10	20	16	16	19
ODPs	7	8	8	7	6	6	6	7	7	7	6	6	6												1	2	3	6	6	6
Orthoptists	0	0	0	0	0	0	1	1	1	1	1	1	1												0	0	0	0	1	1
Paramedics	13	11	11	11	9	11	13	12	13	14	12	12	13												4	9	15	12	12	13
Physiotherapists	27	27	24	27	26	25	25	26	24	25	26	26	26												18	23	30	27	26	26
Practitioner psychologists*				0	0	3	3	3	3	3	4	4	4																	
Prosthetists & orthotists	1	1	1	1	1	1	1	1	1	0	1	1	2												0	1	1	1	1	2
Radiographers	10	10	12	12	12	14	14	14	16	15	15	14	13												2	3	3	10	14	13
SLTs	4	4	4	4	4	4	5	5	6	7	6	6	6												3	4	4	4	6	6
<b>Total - Review hearing</b>	92	90	91	94	89	97	99	100	103	104	102	102	107												44	69	90	90	102	107

\* Practitioner psychologists section of register opened 1st July 2009

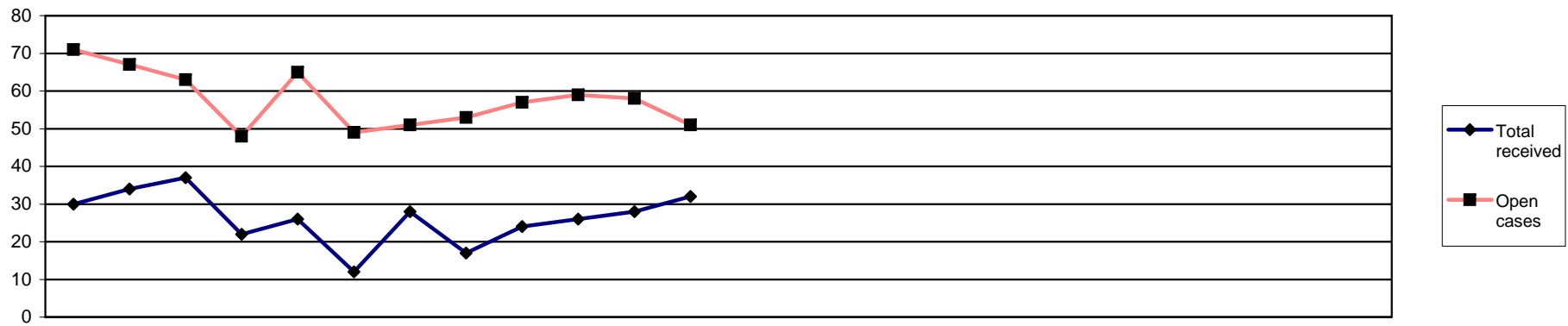
+ Hearing aid dispensers section of register opened 1st April 2010





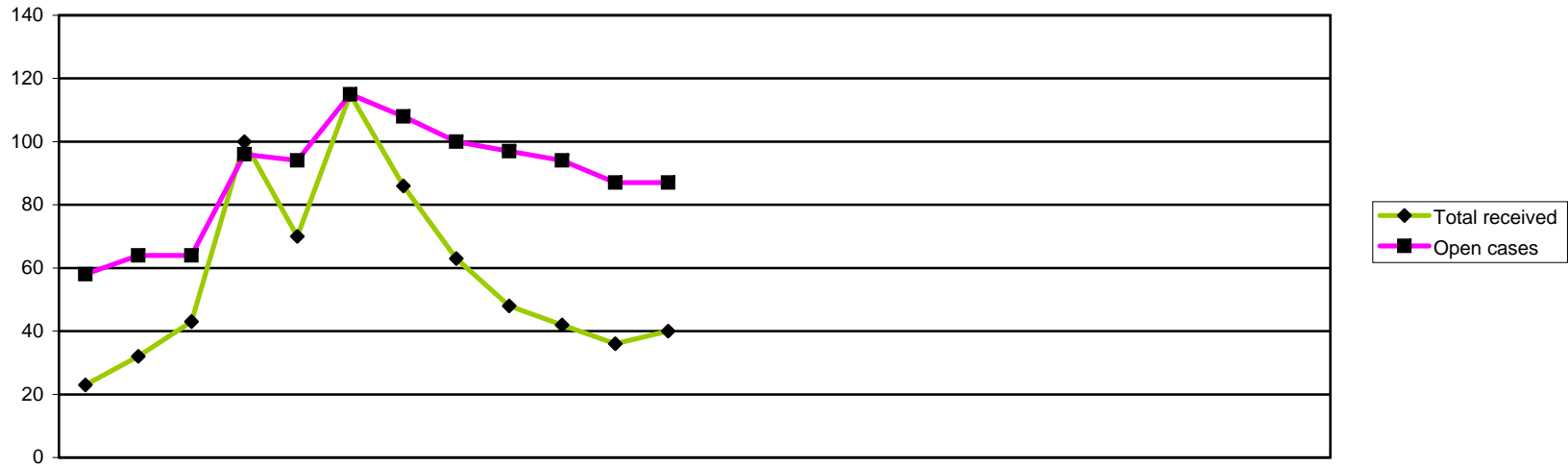
	2009			2010								2011													
	Apr	May	Jun	Jul	Aug	Sep	Oct	Nov	Dec	Jan	Feb	Mar	Apr	May	Jun	Jul	Aug	Sep	Oct	Nov	Dec	Jan	Feb	Mar	
Appeals received	4	2	4	2	1	1	1	2	4	1	4	3													
Reviewed	8	9	8	0	0	0	0	9	2	0	0	5													
Hearings held	6	8	8	0	0	0	0	9	2	0	0	5													
Adjourned/postponed	2	1	0	0	0	0	0	0	0	0	0	1													
Withdrawn	0	0	0	0	0	0	0	0	0	0	1	0													
Allowed	1	5	1	0	0	0	0	4	1	0	0	2													
Dismissed	0	1	3	0	0	0	0	1	1	0	0	1													
Substitute decision	0	0	1	0	0	0	0	2	0	0	0	0													
Remit to ETC	5	2	3	0	0	0	0	2	0	0	0	1													
Current active cases	22	16	7	9	11	12	13	6	8	9	12	11													

2005/6	2006/7	2007/8	2008/9	09/10	10/11
FYE	FYE	FYE	FYE	FYE	YTD
91	104	41	55	29	0
266	90	65	55	41	0
266	90	65	55	38	0
19	20	10	9	4	0
13	16	15	2	1	0
128	33	29	23	14	0
88	29	31	17	7	0
0	0	0	0	0	0
31	6	4	7	13	0



	2009			2010									2011												
	Apr	May	Jun	Jul	Aug	Sep	Oct	Nov	Dec	Jan	Feb	Mar	Apr	May	Jun	Jul	Aug	Sep	Oct	Nov	Dec	Jan	Feb	Mar	
<b>Public</b>	0	1	13	3	2	2	4	1	1	2	1	2													
<b>Police</b>	3	2	4	3	4	3	1	5	6	3	1	3													
<b>HPC</b>	0	0	0	0	0	0	0	0	0	0	1	1													
<b>Anonymous</b>	2	2	4	1	4	2	4	1	0	7	2	2													
<b>Professional</b>	25	29	16	15	16	5	19	10	17	14	23	24													
<b>Total received</b>	30	34	37	22	26	12	28	17	24	26	28	32													
<b>Visits</b>	0	1	1	0	1	0	0	0	0	0	0	0													
<b>Open cases</b>	71	67	63	48	65	49	51	53	57	59	58	51													

2005/6	2006/7	2007/8	2008/9	09/10	10/11
FYE	FYE	FYE	FYE	FYE	YTD
53	21	42	56	32	0
31	38	27	44	38	0
10	10	6	3	2	0
50	78	38	47	31	0
225	137	103	233	213	0
369	284	216	383	316	0
			3	3	0



	2009			2010									2011						2005/6	2006/7	2007/8	2008/9	09/10	10/11							
	Apr	May	Jun	Jul	Aug	Sep	Oct	Nov	Dec	Jan	Feb	Mar	Apr	May	Jun	Jul	Aug	Sep	Oct	Nov	Dec	Jan	Feb	Mar	FYE	FYE	FYE	FYE	FYE	YTD	
<b>Received</b>	Renewal	0	1	11	9	14	54	30	21	11	2	1	0												36	27	81	43	154	0	
	Readmission	2	5	3	6	5	5	5	7	5	3	2	5												33	40	34	94	53	0	
	Admission	10	10	15	60	37	36	33	20	21	19	8	13												165	150	158	248	282	0	
	Self referral	11	16	14	25	14	20	18	15	11	18	25	22												54	86	158	192	209	0	
	<b>Total received</b>	23	32	43	100	70	115	86	63	48	42	36	40												288	303	431	577	698	0	
<b>Considered</b>	Considered by panel	16	21	23	37	52	30	43	48	32	30	32	23												n/a	n/a	256	399	387	0	
	Referred to FTP	2	2	5	6	6	1	8	10	4	4	7	6												n/a	n/a	37	41	61	0	
	Admission rejected	0	1	0	0	0	0	0	1	0	0	0	0												n/a	n/a	2	6	2	0	
	Readmission rejected	0	3	0	0	0	0	0	1	0	2	1	0												n/a	n/a	3	8	7	0	
	Renewal rejected	0	0	0	0	0	0	0	1	0	0	0	0												n/a	n/a	0	2	1	0	
	Not referred to FTP	2	6	4	5	3	4	7	6	2	8	12	7												n/a	n/a	34	82	66	0	
	Admission accepted	10	7	11	24	37	22	24	18	21	11	12	7												n/a	n/a	150	204	204	0	
	Readmission accepted	2	2	2	2	6	2	1	7	3	3	0	2												n/a	n/a	19	51	32	0	
	Renewal accepted	0	0	1	0	0	1	3	4	0	2	0	1												n/a	n/a	1	5	12	0	
	Closed before panel	6	6	16	28	10	15	11	4	5	14	11	17																	143	0
	Open cases	58	64	64	96	94	115	108	100	97	94	87	87												n/a	n/a	75	75	87		