

Fitness to Practise – Kelly Johnson

Final Hearings

90 cases were concluded between October 2009 and January 2010. The mean and median length of time from receipt of case to conclusion for 2009-10 is 18 and 17 months respectively.

32 cases were adjourned or part heard

There were 230 ongoing substantive cases at the end of January 2010. Of those cases 97 have a date fixed for hearing and a further 37 are ready to be fixed by the scheduling team.

Review Hearings

39 review hearings took place between October 2009 and January 2010. At the end of January there were 104 registrants subject to a suspension or conditions of practice order.

Interim Orders

At the end of January there were 40 cases subject to an interim order. 9 of these cases were in the remit of the Investigating Committee. 16 of those cases have had the observation letter sent out. The remaining 31 cases were within the remit of the Conduct and Competence Committee with 6 cases fixed for a final substantive hearing and 2 cases waiting fixing. 15 interim order applications were considered between October 2009 and January 2010 and a further 28 interim order applications were reviewed.

Investigating Committee

250 new allegations or enquiries were received between October 2009 and January 2010. At the end of January, there were 361 open allegations or enquiries. 82 of those cases had not yet met the standard of acceptance for allegations. Of the 279 cases within the pre Investigating Committee remit, 177 cases are between 0 and 4 months old, 67 are between 5 and 8 months old, 20 are between 9 and 12 months old. The remaining cases range from 13 to 33 months. 114 cases have had a notice of observation sent to the registrant,

At its December meeting, Council also asked what the correlation was between the number of registrants and the number of complaints. The table below indicates the position in relation to cases received between April 2009 and December 2009. The number of practitioner psychologists' complaints includes the 44 open cases that were transferred by the British Psychological Society. When those numbers are excluded from the number of registrants subject to complaint, the percentage is 0.28%. This is slight increase from 2008-2009 when the figure was 0.26%

Profession	Number of cases	% of total cases	Number of registrants	% of the Register	% subject to complaints
AS	5	0.80	2,755	1.34	0.18
BS	25	4.02	21,703	10.58	0.12
CH	60	9.65	12,899	6.29	0.47
CS	2	0.32	4,372	2.13	0.05
DT	6	0.96	7,126	3.47	0.08
OT	65	10.45	30,016	14.64	0.22
ODP	31	4.98	10,012	4.88	0.31
OR	0	0.00	1,263	0.62	0.00
PA	134	21.54	15,537	7.58	0.86
PH	102	16.40	44,777	21.83	0.23
PYL*	124	19.94	15,038	7.33	0.82
PO	4	0.64	860	0.42	0.47
RA	39	6.27	26,465	12.90	0.15
SL	25	4.02	12,258	5.98	0.20
Total	622	100	205,081	100	0.30

Of the cases at the Pre-Investigating Panel stage at the end of January 2010, the average age of case (from date the allegation was confirmed to 31 January 2010) is a mean of 4 months and a median of 3 months.

The case to answer rate for the current year is 59%.

Health and Character

64 health and character declarations were received between October 2009 and January 2010. At the end of October there were 94 open cases. The number of open live cases has fallen as we have reached the end of the renewal cycle for renewal

period for occupational therapists and practitioner psychologists and the number of new admission has decreased.

Protection of title

237 new complaints about misuse of title were received between October 2009 and January 2010. At the end of January 2010 there were 59 open protection of title complaints.

Registration Appeals

8 new appeals were received between October 2009 and January 2010. There were 9 open registration appeal cases at the end of January 2010

Meetings

- 1 October 2009 Gill Hawkins, Nine Feet Tall
- 2 October 2009 Emunio Consulting
- 6 and 7 October 2009 Council Away Day
- 7 October 2009 Customer Service Training Provider
- 8 October 2009 Kingsley Napley
- 9 October 2009 General Dental Council
- 12 October 2009 Conference with Counsel
- 12 October 2009 Unions Meeting
- 13 October 2009 Jon Dee
- 15 October 2009 Football Association
- 16 October 2009 CHRE Good Practice Seminar
- 19 October 2009 Hearing Aid Council
- 20 and 21 October 2009 Independent Safeguarding Authority
- 23 October 2009 High Court: Lloyd Subner

26 October 2009 Scottish Social Care Council
 27 October 2009 Scottish Counter Fraud Service
 28 October 2009 Blake Laphone Tarlo Lyons
 29 October 2009 South East Coast Ambulance Service
 30 October 2009 British Psychoanalytic Council
 2 and 3 November 2009 Case Management System Vendors
 2 November 2009 General Social Care Professions Council
 4 November 2009 Jon Dee, PKF
 5 November 2009 Tim Bailey, CHRE
 9 November 2009 British Psychological Society, Wales
 11 November 2009 Nick Clarke, Department of Health
 11 November 2009 UBIQUS
 16 November 2009 Case Management System Vendor
 19 November 2009 Kingsley Napley
 19 November 2009 Hearing Aid Council
 20 November 2009 Benjamin James and Talitha Burson, BDB
 24 November 2009 Employer Event: London
 25 November 2009 Case Management System Vendors
 25 November 2009 High Court: James Rice
 26 November 2009 Employer Event: Cardiff
 1 December 2009 Employer Event: Belfast
 2 December 2009 Employer Event: Glasgow
 3 December 2009 TRIM demonstration
 4 December 2009 Business Objects demonstration
 8 December 2009 High Court: Richard Howlett
 16 December 2009 Sussex Police
 17 December 2009 FOIA/DPA Meeting
 7 January 2010 CLEAR Mid Year Meeting
 13 January 2010 CHRE FTP Forum
 14 January 2010 Insurers
 14 January 2010 Esther McMorris, 9 Feet Tall

15 January 2010 ISA/DH Meeting
 19 January 2010 Association of Educational Psychologists
 19 January 2010 RCSLT
 22 January 2010 Panel Member Training
 27 January 2010 British Dietetic Association
 28 January 2010 No Fault Compensation Working Group
 29 January 2010 ACCA

Resources

Case Management

Russell Brown, Lead Case Manager left the department in early January 2010. Ciara O'Dwyer and Sabrina Adams have been promoted to Acting Lead Case manager whilst recruitment for Russell's replacement and a new lead case manager post for April 2010 are appointed. Interviews for the permanent Lead Case Manager posts are due to take place on 4 March 2010.

Victoria Adams and Padideh Dolatshahi, both Case Managers, left the department to join the RPSGB in November 2009 and the RCN at the end of January 2010. Gareth Llewellyn, Sonia Okurwa and Bahar Ala-Eddini joined the team as Case Managers in January. Rachel Bull also moved from the Hearings Team to the Case Management Team in January. We currently have a temporary case support officer assisting us with the administration involved in the management of cases.

Hearings

Kabir Siddiqui and Akua Dwomoh-Bonsu joined the hearings team as Hearings Officers in November 2009 to ensure the team are able to clerk the increasing number of hearings. Following Rachel Bull's move to Case Team 3, Eleanor Wilson has been appointed to team as a Scheduling Officer. We currently also have a temporary scheduling officer to aid us in the listing of hearings.

Administration

Jameel Anwar's role was extended in November to that of Administration Manager, leading the three Team Administrators within the department. Cirene Chagas joined as a Team Administrator in January, taking over from a temporary administrator.

Partners

We are currently advertising for legal assessors to ensure there enough to cover the amount of hearings that are anticipated to take place in 2010-2011. Training for new panel members took place in January 2010 and refresher training has been ongoing throughout the year.

Other

The CHRE audit of the initial stages of the fitness to practise process is took place between 30 November 2009 and 12

December 2010. We are currently waiting for the final copy of the report.

**Health Professions Council
2009-2010**

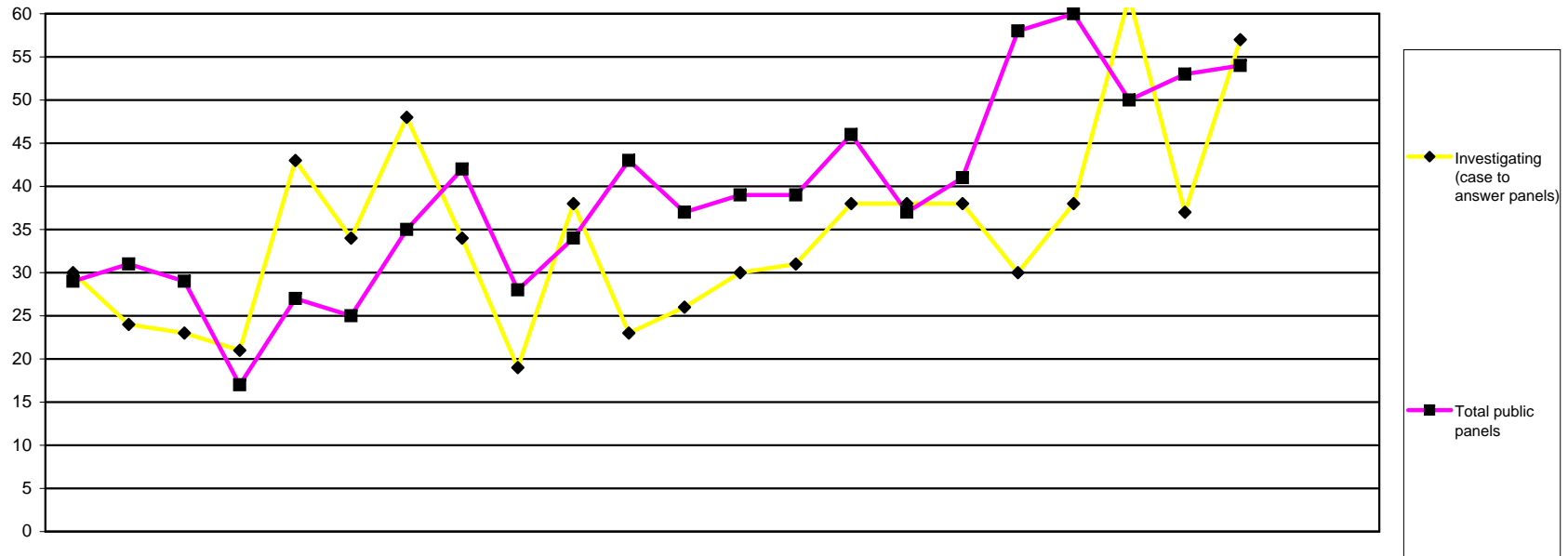
Fitness to Practise Department Management Reports

Fitness to Practise	Total cases considered	2
	Enquiries and allegations April 2008 - March 2010	3,4
	Total Investigating Panel decisions and referrals	5
	Investigating Panel Decisions by Profession	6
	Length of time allegations	7
	Allegation made - Investigating Committee	8
	Allegations made - conclusion of final hearing	9,10
	Allegations made - Investigating Panel	11,12
	Investigating Panel - Case conclusion	13,14
	Interim Orders Panels	15
	Panel Hearings Decisions	16,17,18
	Final Hearings representation	19
	Hearings - Decisions by profession	20
	Cases Pending - Investigating Panel	21
	Cases Pending - Conduct and competence and Health Panels	22
	Cases Pending - review hearings	23
Registration Appeals	Registration Appeals	24
Health and Character	Health and Character Declarations	25
Protection of Title	Protection of Title	26

Health Professions Council

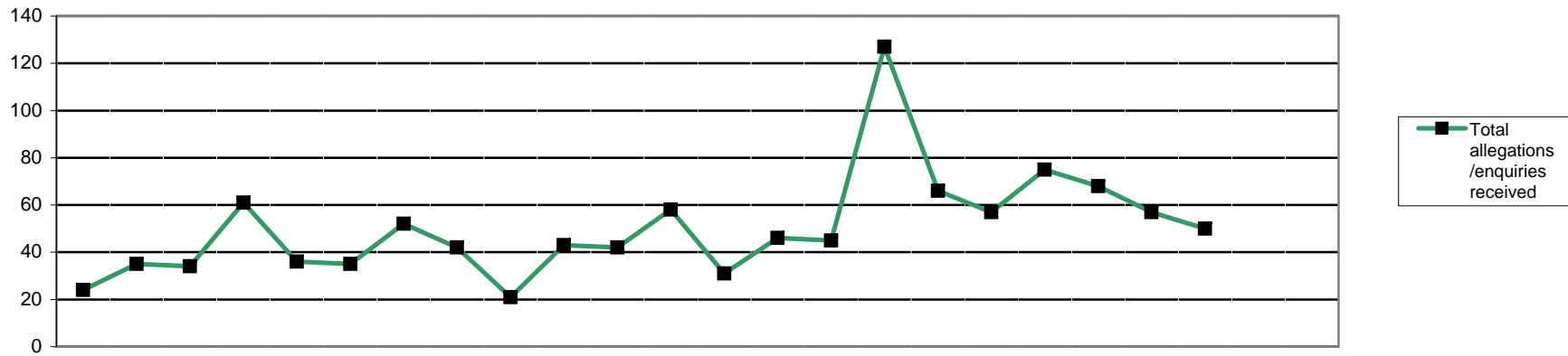
Total cases considered April 2008- March 2010

Fitness to Practise Department



		2008			2009								2010					2007/8	2008/9	09/10										
		Apr	May	Jun	Jul	Aug	Sep	Oct	Nov	Dec	Jan	Feb	Mar	Apr	May	Jun	Jul	Aug	Sep	Oct	Nov	Dec	Jan	Feb	Mar	FYE	FYE	YTD		
	Investigating (case to answer panels)	30	24	23	21	43	34	48	34	19	38	23	26	30	31	38	38	38	30	38	62	37	57				297	363	399	
Public Panels	Investigating (incorrect entry)	1	0	0	0	0	0	0	0	0	0	0	0	1	1	0	0	0	0	0	0	0	0	0				19	1	2
	Conduct & Competence	17	15	13	8	11	14	17	16	24	25	20	23	20	19	27	26	24	37	36	28	31	34				176	203	282	
	Health	0	0	0	0	0	1	0	0	0	0	2	0	1	0	0	0	0	0	1	0	0	3				9	3	5	
	Review cases	7	9	11	7	7	6	12	11	0	7	6	10	3	9	8	2	9	9	10	14	8	9				67	93	81	
	Interim order (application)	1	2	2	1	5	1	3	4	3	1	4	3	9	2	3	2	3	4	2	2	7	4				20	30	38	
	Interim order (review)	3	5	3	1	11	3	3	11	1	1	11	1	5	8	8	7	5	8	11	6	7	4				52	54	69	
	Total public panels		29	31	29	17	27	25	35	42	28	34	43	37	39	39	46	37	41	58	60	50	53	54				343	384	477
Total panels		59	55	52	38	77	59	83	76	47	72	66	63	69	70	84	75	79	88	98	112	90	111				640	747	876	

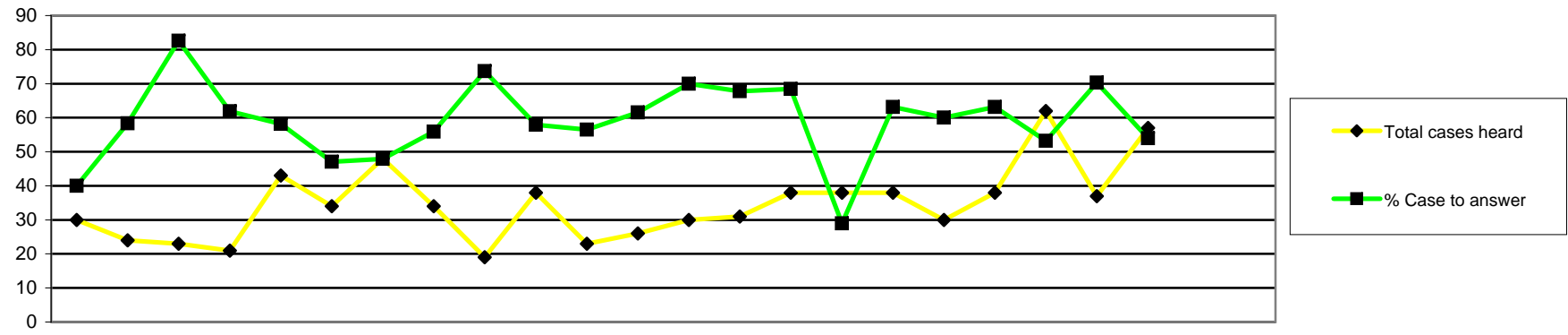
This table displays how many cases were considered by each type of panel



		2008			2009									2010									2005/6	2006/7	2007/8	2008/9	09/10			
		Apr	May	Jun	Jul	Aug	Sep	Oct	Nov	Dec	Jan	Feb	Mar	Apr	May	Jun	Jul	Aug	Sep	Oct	Nov	Dec	Jan	Feb	Mar	FYE	FYE	FYE	FYE	YTD
Source of enquiry	Total enquiries	6	13	7	12	7	16	11	9	9	14	18	20	5	19	17	45	19	22	24	19	15	15	Not recorded			109	142	200	
	Employer	3	3	1	3	2	4	3	6	3	3	9	10	3	9	8	10	8	10	15	5	4	2		44	50	74			
	Public	3	8	3	5	1	7	1	2	3	3	4	2	0	8	4	30	6	10	4	4	9	11		32	42	86			
	Police	0	0	0	2	1	0	0	0	0	0	0	1	0	0	2	0	0	0	0	0	1	0		3	4	3			
	Professional body	0	1	1	0	0	0	0	0	0	0	0	0	0	0	0	0	0	0	0	0	0	0		1	2	0			
	Registrant	0	0	1	1	2	1	4	1	2	0	0	7	1	1	1	2	1	1	2	6	1	0		13	19	16			
	Other	0	0	1	0	1	1	1	0	1	4	1	0	0	0	0	2	2	1	1	3	0	1		2	10	10			
	Article 22(6)/Anon	0	1	0	1	0	3	2	0	0	4	4	0	1	1	2	1	2	0	2	1	0	1		14	15	11			
Source of allegation	Total allegations	18	22	27	49	29	19	41	33	12	29	24	38	26	27	28	82	47	35	51	49	42	35	316	322	315	341	422		
	Employer	8	15	18	17	12	8	18	14	4	12	12	11	12	21	12	26	13	10	18	11	11	16	113	164	127	149	150		
	Public	4	2	3	5	10	2	7	11	0	7	5	11	3	1	7	33	16	8	14	15	15	8	61	77	76	67	120		
	Police	3	3	2	6	1	5	3	3	2	0	3	1	3	2	2	4	4	4	2	2	2	5	27	31	32	32	30		
	Professional body	0	0	0	0	0	1	0	0	0	0	0	0	0	0	0	0	0	1	0	0	0	0	0	1	6	1	1		
	Registrant	1	2	2	3	3	1	2	1	2	6	2	5	4	1	1	3	3	4	5	6	2	2	30	16	22	30	31		
	Other	1	0	2	2	3	1	2	1	0	1	0	1	1	0	1	6	1	2	3	2	2	0	13	7	3	14	18		
	Article 22(6)/Anon	1	0	0	16	0	1	9	3	4	3	2	9	3	2	5	10	10	6	9	13	10	4	57	23	49	48	72		
Allegation type	Misconduct	12	17	21	34	16	11	25	20	4	25	16	22	14	16	13	53	32	23	41	33	28	24	205	228	177	223	277		
	Lack of competence	2	2	2	8	10	1	4	6	2	0	4	9	6	4	10	15	8	7	7	7	6	6	33	44	29	50	76		
	Conviction/caution	4	3	3	4	1	7	10	7	3	0	4	5	5	6	4	12	4	5	3	7	5	5	41	41	49	51	56		
	Health	0	0	1	0	1	0	1	0	1	3	0	0	1	0	0	1	1	0	0	1	1	0	2	1	1	7	5		
	Other regulator	0	0	0	0	0	0	0	0	1	0	0	0	0	0	0	0	0	0	0	0	0	0	1	0	2	1	0		
	Incorrect or fraudulent entry	0	0	0	0	1	0	1	0	1	1	0	2	0	1	1	1	2	0	0	1	2	0	33	3	4	6	8		
	Not classified	0	0	0	3	0	0	0	0	0	0	0	0	0	0	0	0	0	0	0	0	0	0			24	3	0		
	Total allegations/enquiries received	24	35	34	61	36	35	52	42	21	43	42	58	31	46	45	127	66	57	75	68	57	50	314	318	424	483	622		

	Employer	Public	Police	Professional Body	Registrant	Other	Article 22(6)/Anon
Arts therapists	0	2	0	0	0	2	1
Biomedical scientists	18	1	1	0	2	0	3
Chiropodists & podiatrists	14	22	11	0	8	3	2
Clinical scientists	1	0	0	0	0	0	1
Dietitians	4	0	0	0	0	0	2
Occupational therapists	35	14	0	0	7	2	7
ODPs	19	1	3	0	1	1	6
Orthoptists	0	0	0	0	0	0	0
Paramedics	48	30	5	0	7	3	41
Physiotherapists	40	33	12	0	11	3	3
Practitioner psychologists	13	84	2	0	7	12	6
Prosthetists & orthotists	1	2	0	0	0	1	0
Radiographers	20	4	4	1	2	1	7
SLTs	11	8	0	0	2	0	4
Total	224	201	38	1	47	28	83

Total 2007/8	Total 2008/9	Total to date
16	10	5
26	43	25
40	62	60
6	8	2
14	1	6
45	55	65
38	55	31
3	0	0
94	100	134
85	95	102
N/A	N/A	124
3	6	4
32	34	39
22	14	25
424	483	622



		2008			2009									2010			2006/7	2007/8	2008/9	09/10									
		Apr	May	Jun	Jul	Aug	Sep	Oct	Nov	Dec	Jan	Feb	Mar	Apr	May	Jun	Jul	Aug	Sep	Oct	Nov	Dec	Jan	Feb	Mar	FYE	FYE	FYE	YTD
Case to Answer	Total cases heard	30	24	23	21	43	34	48	34	19	38	23	26	30	31	38	38	38	30	38	62	37	57	178	299	363	399		
	Referred to CCC (Reg representations)	5	8	13	11	16	12	13	12	5	11	10	10	13	13	20	7	14	12	18	21	18	19	Not recorded	97	126	155		
	Referred to CCC (Rep representations)	2	2	0	1	1	1	2	3	1	0	0	1	0	1	1	2	2	1	2	3	3	3		25	14	18		
	Referred to CCC (No representations)	4	4	5	1	8	3	6	4	8	9	3	5	6	6	4	2	7	5	3	9	5	8		57	60	55		
	Referred to HC (Reg representations)	1	0	1	0	0	0	2	0	0	1	0	0	1	1	0	0	1	0	1	0	0	0		3	5	4		
	Referred to HC (Rep representations)	0	0	0	0	0	0	0	0	0	0	0	0	0	0	0	0	0	0	0	0	0	0		2	0	0		
	Referred to HC (No representations)	0	0	0	0	0	0	0	0	0	0	0	0	0	0	1	0	0	0	0	0	0	0		1	0	1		
	Referred to IC (Reg representations)	0	0	0	0	0	0	0	0	0	0	0	0	1	0	0	0	0	0	0	0	0	0		1	0	1		
	Referred to IC (Rep representations)	0	0	0	0	0	0	0	0	0	0	0	0	0	0	0	0	0	0	0	0	0	0		0	0	0		
	Referred to IC (No representations)	0	0	0	0	0	0	0	0	0	1	0	0	0	0	0	0	0	0	0	0	0	0		0	1	0		
	Total case to answer	12	14	19	13	25	16	23	19	14	22	13	16	21	21	26	11	24	18	24	33	26	30		142	186	206	234	
	% Case to answer	40	58.3	82.6	61.9	58.1	47.1	47.9	55.9	73.7	57.9	56.5	61.5	70	67.7	68.4	28.9	63.2	60	63.2	53.2	70.3	54		62	57	59		
No case to answer	Not referred (Reg representations)	11	7	4	7	12	15	14	12	4	14	9	6	9	8	10	24	11	9	12	26	10	21	Not recorded	78	115	140		
	Not referred (Rep representations)	3	1	0	0	3	1	1	1	0	0	0	3	0	0	1	2	1	1	0	0	0	2		8	13	7		
	Not referred (No representations)	2	2	0	1	3	0	8	2	1	2	0	0	0	1	1	0	1	1	2	1	0	2		21	21	9		
	Total cases not referred	16	10	4	8	18	16	23	15	5	16	9	9	9	9	12	26	13	11	14	27	10	25		107	149	156		
	Further Information	2	0	0	0	0	2	2	0	0	0	1	1	0	1	0	1	1	1	0	2	1	2	14	6	8	9		

By profession

	No Case to Answer	Case to answer				Total YTD
		FI	CCC	HC	IC	
Arts therapists	1	0	3	0	0	4
Biomedical scientists	6	1	15	0	1	23
Chiropodists & podiatrists	27	0	18	1	0	46
Clinical scientists	1	0	1	0	0	2
Dietitians	6	0	1	0	0	7
Occupational therapists	21	0	25	1	0	47
ODPs	10	2	27	2	0	41
Orthoptists	0	0	0	0	0	0
Paramedics	17	2	71	1	0	91
Physiotherapists	36	1	32	0	0	69
Practitioner psychologists	17	3	6	0	0	26
Prosthetists & orthotists	2	0	1	0	0	3
Radiographers	8	0	24	0	0	32
SLTs	4	0	4	0	0	8
Total YTD	156	9	228	5	1	399

2007/2008 FYE	2008/2009 FYE	2009/10 YTD
11	6	4
14	42	23
31	31	46
6	7	2
9	5	7
29	40	47
24	30	41
2	1	0
62	72	91
56	75	69
0	0	26
4	2	3
41	32	32
10	20	8
299	363	399

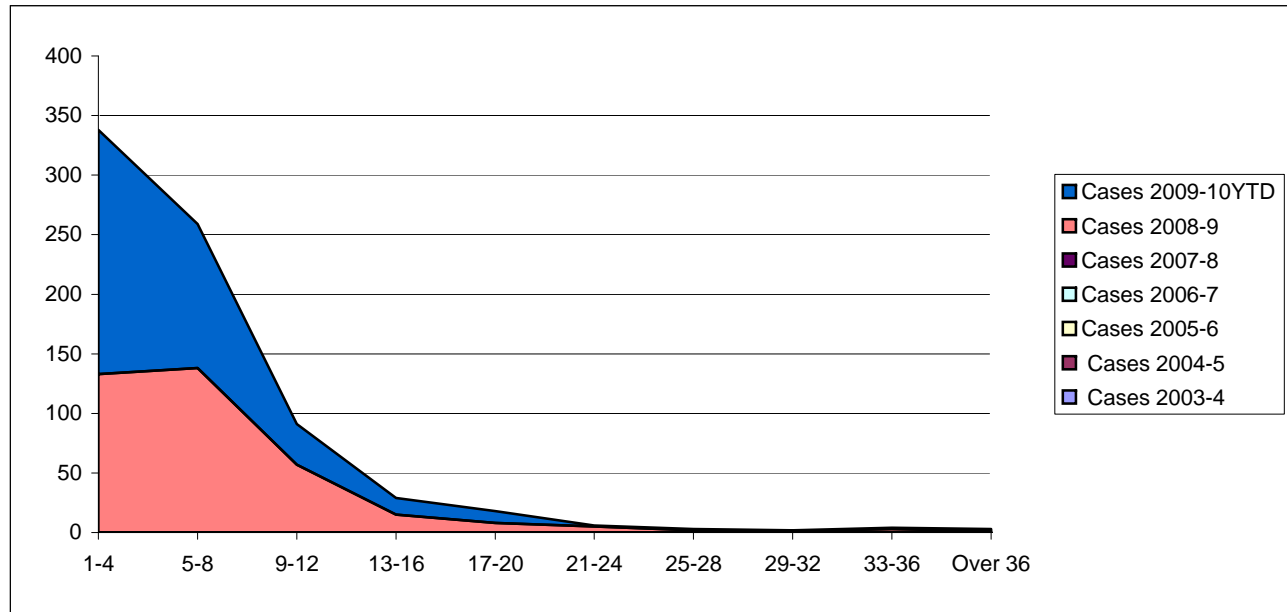
By source of allegation

	No Case to Answer	Case to answer				Total YTD
		FI	CCC	HC	IC	
Employer	36	4	129	5	0	174
Public	78	3	24	0	1	106
Police	9	0	13	0	0	22
Professional body	1	0	1	0	0	2
Registrant	15	1	12	0	0	28
Other	3	1	9	0	0	13
Article 22(6)/Anon	14	0	40	0	0	54
Total YTD	156	9	228	5	1	399

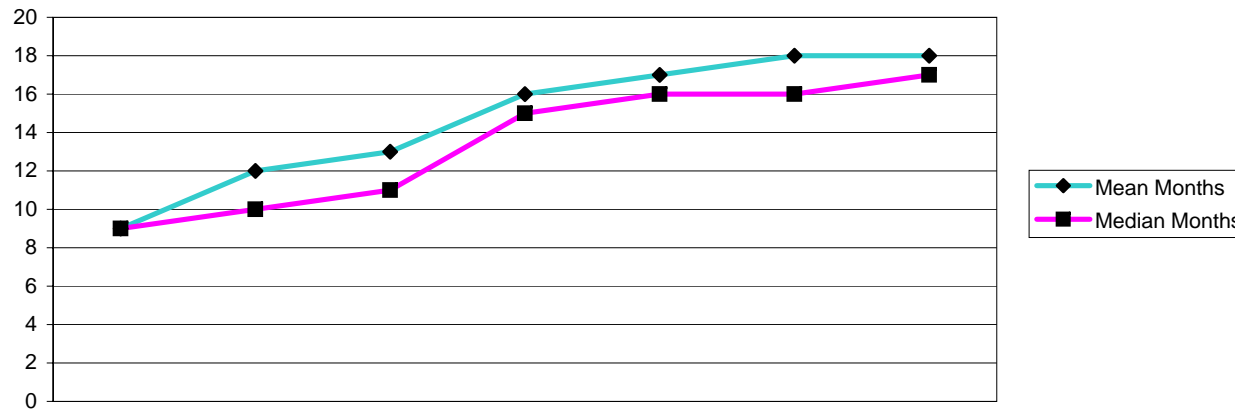
2008/2009 FYE	2009/10 YTD
176	174
78	106
30	22
2	2
12	28
19	13
46	54

		Month of Panel																							
		2008						2009						2009											
Months		Apr	May	Jun	Jul	Aug	Sep	Oct	Nov	Dec	Jan	Feb	Mar	Apr	May	Jun	Jul	Aug	Sep	Oct	Nov	Dec	Jan	Feb	Mar
Cases awaiting ICP	0-4	69	55	65	94	94	58	80	80	55	53	58	78	122	139	137	171	193	197	209	191	191	177		
	5-8	30	62	58	57	51	68	51	55	62	58	53	49	50	42	42	43	37	41	47	57	69	67		
	9-12	39	19	28	37	45	40	27	24	33	34	32	35	14	16	17	23	21	18	16	15	12	20		
	13-16	21	28	22	20	15	21	28	25	16	12	16	19	10	7	9	8	7	9	9	12	13	9		
	17-20	11	10	12	12	14	11	9	8	19	18	10	12	2	3	1	2	3	4	3	3	3	5		
	21-24	5	8	6	5	2	5	5	8	3	5	8	10	1	1	0	0	0	0	0	0	1	1		
	25-28	1	2	6	7	5	0	1	1	4	3	2	2	2	1	1	0	0	0	0	0	0	0		
	29-32	4	3	2	1	2	5	2	2	0	1	2	3	1	1	1	2	1	1	1	0	0	0		
over 33	13	11	11	12	9	10	10	8	9	8	8	8	2	1	1	0	1	1	1	1	1	0			
Cases awaiting final hearing (from ICP)	1-4	56	51	45	46	59	48	62	56	54	54	46	48	80	85	95	91	99	91	97	104	111	118		
	5-8	17	29	43	44	26	22	31	37	36	38	42	32	54	53	61	47	44	49	54	68	62	71		
	9-12	29	22	19	22	47	20	22	29	28	30	29	31	18	22	25	29	41	26	34	21	19	20		
	13-16	35	36	45	33	26	4	40	36	23	32	28	29	21	21	17	14	8	12	12	16	22	12		
	17-20	16	12	9	21	30	14	13	13	21	23	22	8	14	17	12	10	5	6	8	6	3	2		
	21-24	10	15	9	11	8	8	18	17	11	5	3	18	0	0	4	5	9	9	7	6	3	4		
	25-28	2	5	5	5	5	0	6	11	14	17	9	8	2	0	1	1	1	1	2	2	3	2		
	29-32	4	3	2	2	5	0	1	2	2	3	4	7	0	1	1	1	1	0	0	0	0	0		
over 33	6	6	5	1	7	1	3	5	4	5	2	1	0	0	0	0	0	1	0	0	0	0			

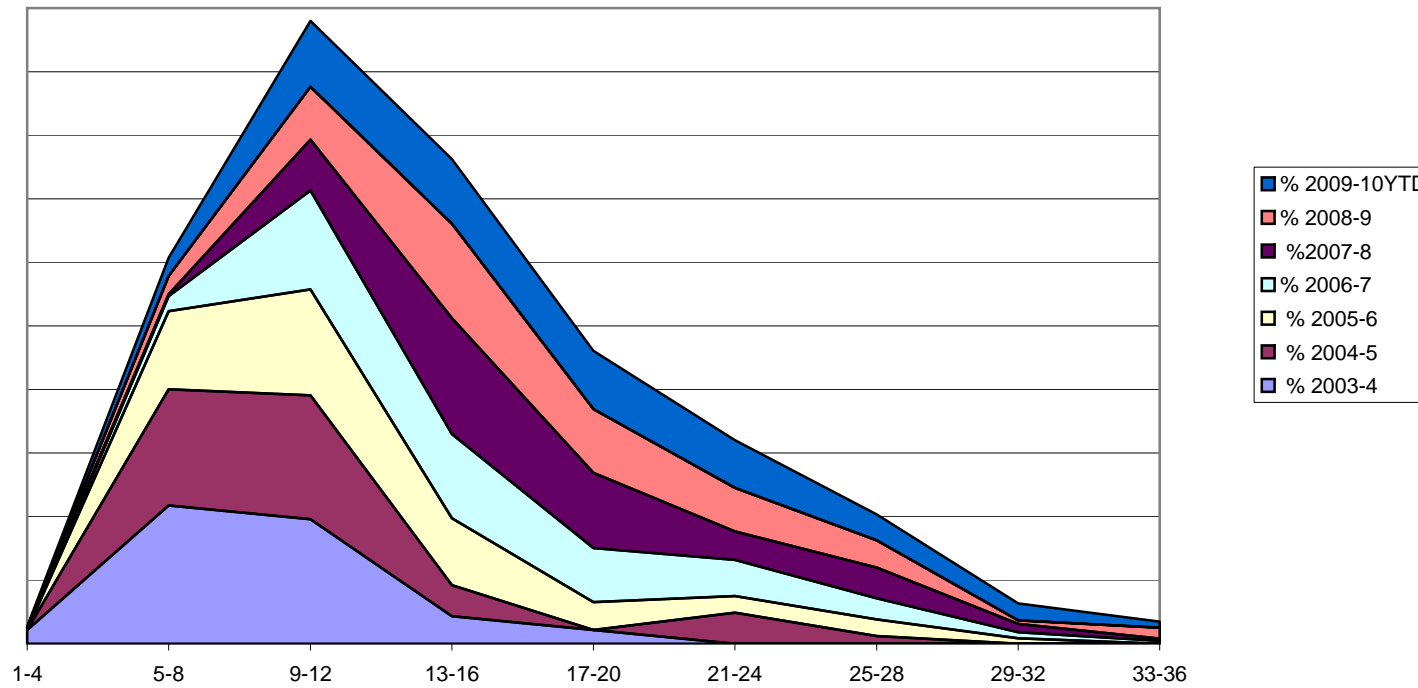
NB for 2008-9 the figures were recorded in weeks, from April 2009 they are recorded in months



Number of Months	Cases 2003-4	Cases 2004-5	Cases 2005-6	Cases 2006-7	Cases 2007-8	Cases 2008-9	Cases 2009-10YTD
1-4						133	205
5-8						138	121
9-12						57	34
13-16						15	14
17-20						8	10
21-24						5	1
25-28						2	1
29-32						1	1
33-36						3	1
Over 36			Not available			1	2
Mean Months						7	6
Median Months						5	4
Total Cases						363	390

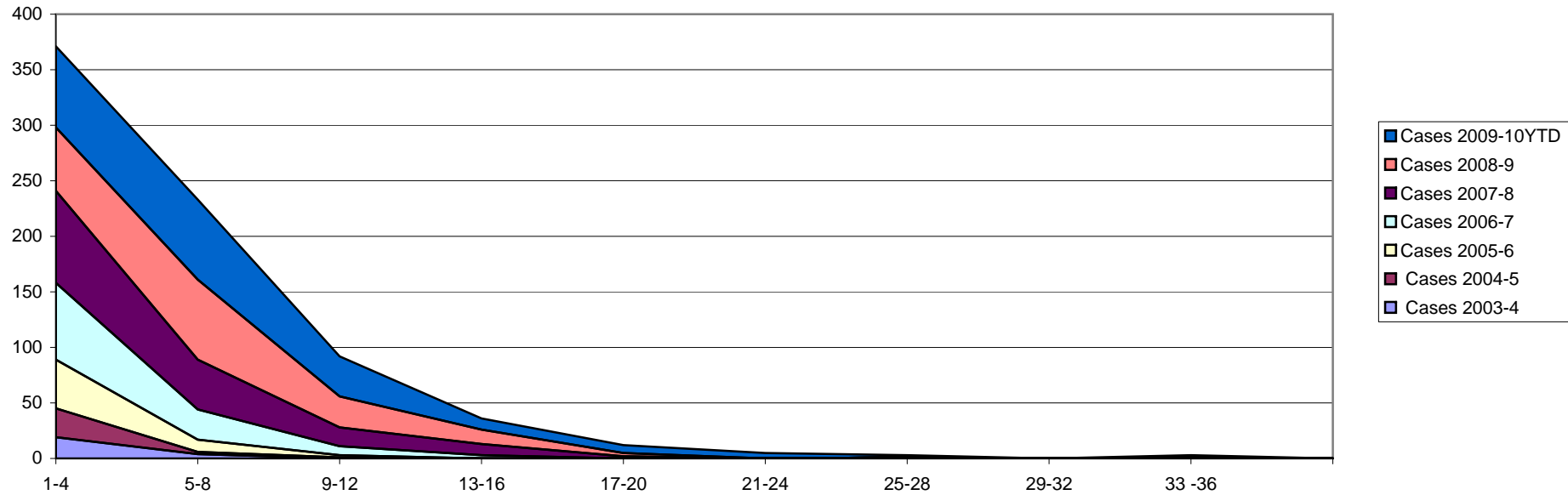


Number of Months	Cases 2003-4	Cases 2004-5	Cases 2005-6	Cases 2006-7	Cases 2007-8	Cases 2008-9	Cases 2009-10YTD
1-4	1	0	0	0	1	0	1
5-8	10	15	14	5	1	10	12
9-12	9	16	19	33	25	29	43
13-16	2	4	12	28	57	52	42
17-20	1	0	5	18	37	35	38
21-24	0	4	3	12	14	24	31
25-28	0	1	3	7	15	15	17
29-32	0	0	1	2	4	2	11
33-36	0	0	0	1	1	6	4
Over 36	0	0	0	0	0	2	8
Mean Months	9	12	13	16	17	18	18
Median Months	9	10	11	15	16	16	17
Total Cases	23	41	57	106	156	175	207



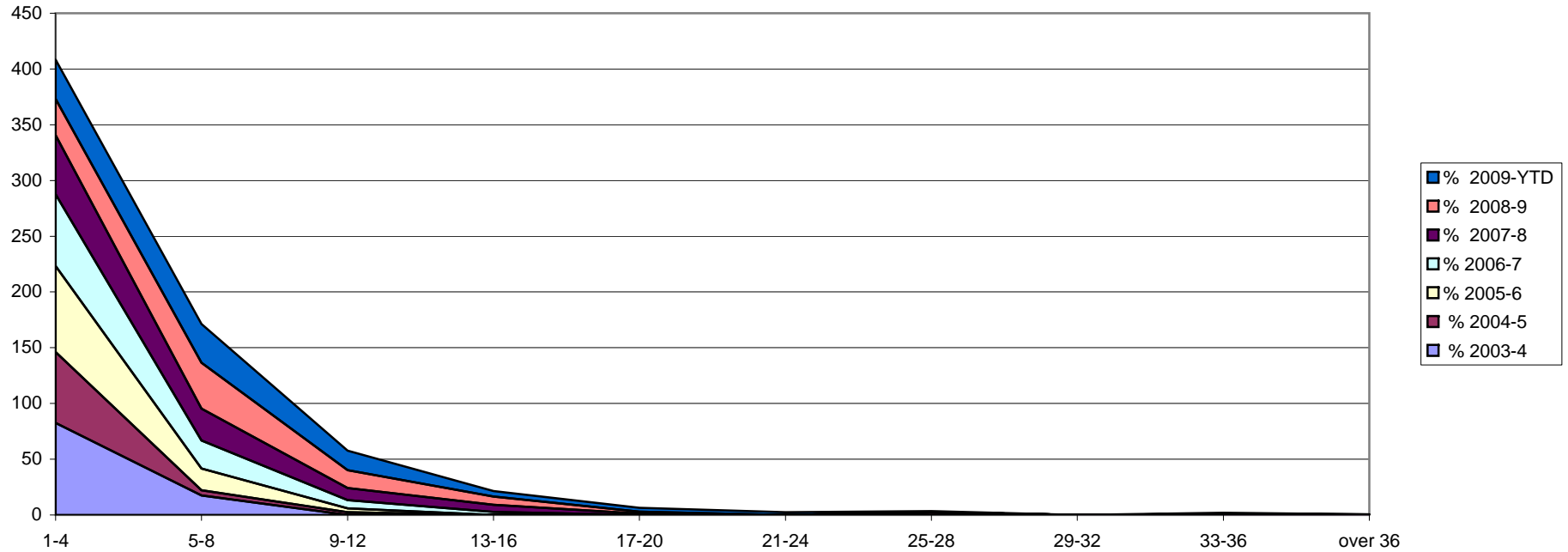
Number of Months	% 2003-4	% 2004-5	% 2005-6	% 2006-7	% 2007-8	% 2008-9	% 2009-10YTD
1-4	4.3	0.0	0.0	0.0	0.6	0.0	0.5
5-8	43.5	36.6	24.6	4.7	0.6	5.7	5.8
9-12	39.1	39.0	33.3	31.1	16.0	16.6	20.8
13-16	8.7	9.8	21.1	26.4	36.5	29.7	20.3
17-20	4.3	0.0	8.8	17.0	23.7	20.0	18.4
21-24	0	9.8	5.3	11.3	9.0	13.7	15.0
25-28	0	2.4	5.3	6.6	9.6	8.6	8.2
29-32	0	0.0	1.8	1.9	2.6	1.1	5.3
33-36	0	0.0	0.0	0.9	0.6	3.4	1.9
Over 36	0	0.0	0.0	0.9	0.6	1.1	3.9

Health Professions Council Allegations made - Investigating Panel (concluded final hearing cases) 2003-4 to 2009- Fitness to Practise Department

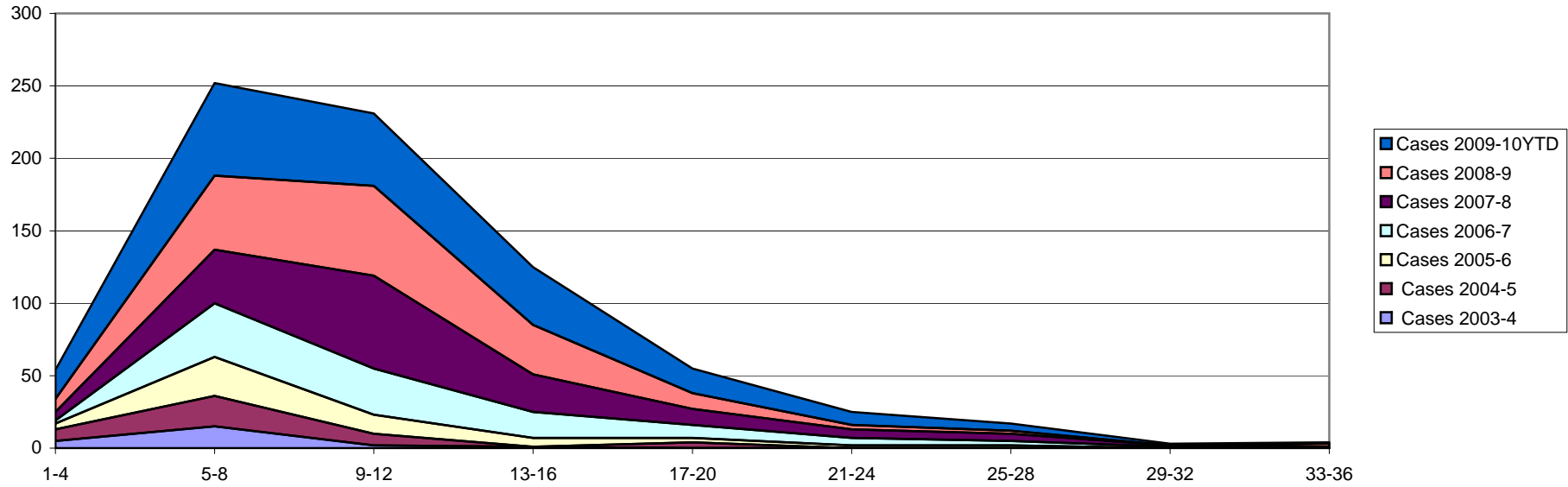


Number of Months	Cases 2003-4	Cases 2004-5	Cases 2005-6	Cases 2006-7	Cases 2007-8	Cases 2008-9	Cases 2009-10YTD
1-4	19	26	44	69	83	57	73
5-8	4	2	11	27	45	72	72
9-12	0	1	2	8	17	28	36
13-16	0	0	0	3	10	13	10
17-20	0	0	0	0	2	3	7
21-24	0	0	0	0	0	0	5
25-28	0	1	0	0	0	0	2
29-32	0	0	0	0	0	0	0
33 -36	0	0	0	0	0	1	2
over 36	0	0	0	0	0	0	0
Mean Months	3	4	3	4.5	6	7	7
Meadian Months	3	3	3	3	4	6	6
Total Cases	23	41	57	107	157	175	207

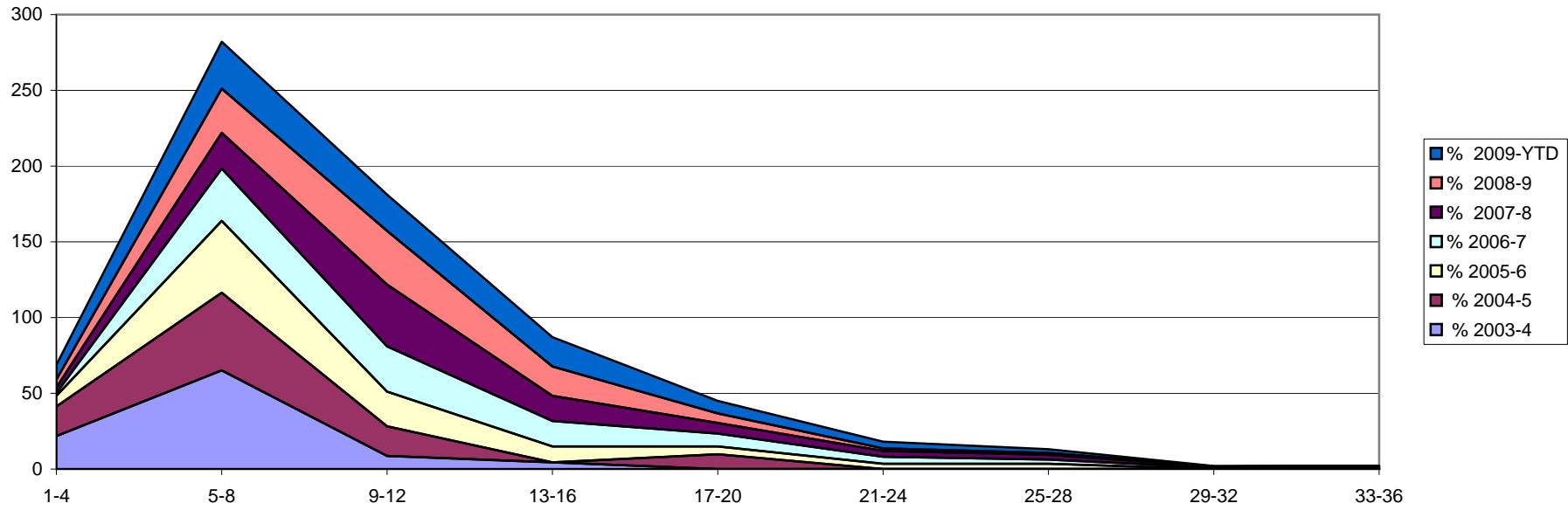
Allegations made - Investigating Panel percentages



Number of Months	% 2003-4	% 2004-5	% 2005-6	% 2006-7	% 2007-8	% 2008-9	% 2009-YTD
1-4	83	63	77	64	53	33	35
5-8	17	5	19	25	29	41	35
9-12	0	2	4	7	11	16	17
13-16	0	0	0	3	6	7	5
17-20	0	0	0	0	1	2	3
21-24	0	0	0	0	0	0	2
25-28	0	2	0	0	0	0	1
29-32	0	0	0	0	0	0	0
33-36	0	0	0	0	0	1	1
over 36	0	0	0	0	0	1	0

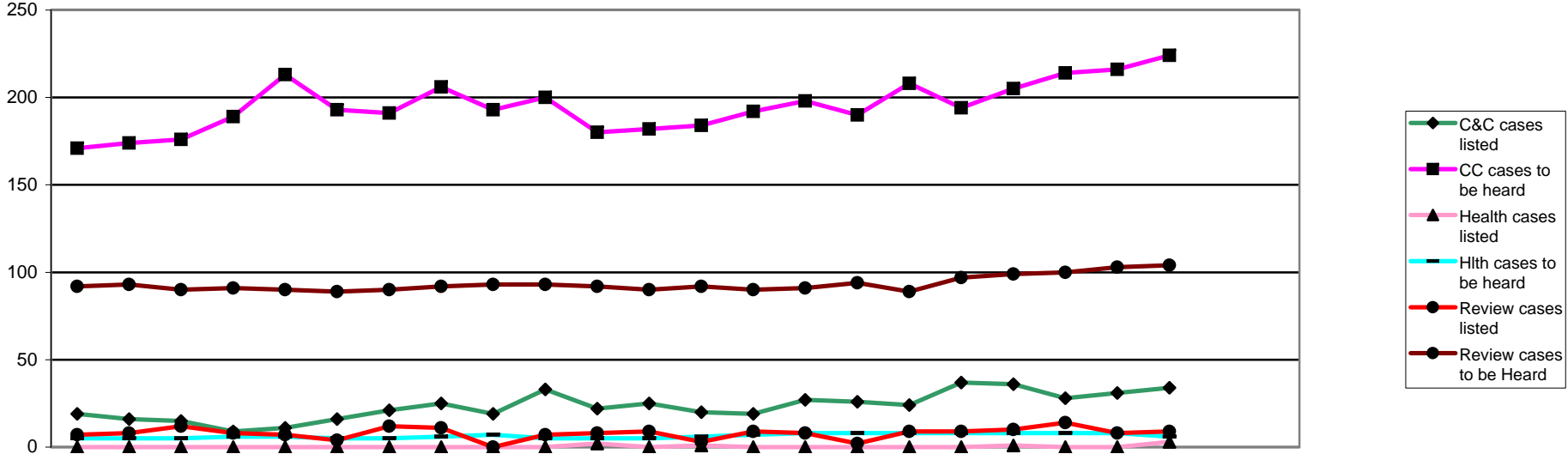


Number of Months	Cases 2003-4	Cases 2004-5	Cases 2005-6	Cases 2006-7	Cases 2007-8	Cases 2008-9	Cases 2009-10YTD
1-4	5	8	4	2	6	9	20
5-8	15	21	27	37	37	51	64
9-12	2	8	13	32	64	62	50
13-16	1	0	6	18	26	34	40
17-20	0	4	3	9	11	11	17
21-24	0	0	2	5	6	3	9
25-28	0	0	2	3	5	2	5
29-32	0	0	0	1	1	0	1
33-36	0	0	0	0	1	2	1
Over 36	0	0	0	0	0	1	0
Mean Months	6	8	10	11.5	12	11	11
Median Months	5	7	8	10	11	10	10
Total Cases	23	41	57	107	157	175	207



Number of Months	% 2003-4	% 2004-5	% 2005-6	% 2006-7	% 2007-8	% 2008-9	% 2009-YTD
1-4	22	20	7	2	4	5	10
5-8	65	51	47	35	24	29	31
9-12	9	20	23	30	41	35	24
13-16	4	0	11	17	17	19	19
17-20	0	10	5	8	7	6	8
21-24	0	0	4	5	4	2	4
25-28	0	0	4	3	3	1	2
29-32	0	0	0	1	1	0	0
33-36	0	0	0	0	1	1	0
Over 36	0	0	0	0	1	1	0

	Applications Considered	Applications Granted	Applications Not Granted	Reviewed	Revoked	Hearings held 2007/8 FYE	Hearings held 2008/9 FYE	Hearings held 2009/10 YTD
Arts therapists	1	1	0	0	0	4	4	1
Biomedical scientists	1	1	0	6	0	8	16	7
Chiropodists & podiatrists	4	4	0	3	0	6	5	7
Clinical scientists	0	0	0	0	0	4	0	0
Dietitians	0	0	0	0	0	0	0	0
Occupational therapists	1	1	0	5	0	3	6	6
ODPs	6	6	0	11	1	18	18	17
Orthoptists	0	0	0	0	0	0	0	0
Paramedics	11	11	0	21	1	16	14	32
Physiotherapists	6	6	0	11	1	8	13	17
Practitioner psychologists	2	2	0	0	0			2
Prosthetists & orthotists	0	0	0	0	0	0	0	0
Radiographers	5	5	0	2	0	7	6	7
SLTs	2	2	0	5	0	0	3	7
Total	39	39	0	64	3	74	85	103



Page 14 part 1 Panel Hearings Decisions: Conduct and Competence Cases

	2008			2009									2010									2005/6	2006/7	2007/8	2008/9	09/10				
	Apr	May	Jun	Jul	Aug	Sep	Oct	Nov	Dec	Jan	Feb	Mar	Apr	May	Jun	Jul	Aug	Sep	Oct	Nov	Dec	Jan	Feb	Mar	FYE	FYE	FYE	FYE	YTD	
Conduct & Competence Committee																														
C&C cases listed	19	16	15	9	11	16	21	25	19	33	22	25	20	19	27	26	24	37	36	28	31	34	73	119	176	231	282			
Struck off	4	1	5	4	4	3	5	9	5	11	7	6	0	4	9	3	10	10	5	8	1	3	11	26	37	64	53			
Suspended	1	3	1	1	3	2	2	1	2	2	1	4	4	2	1	4	1	6	5	7	4	3	19	19	30	23	37			
Conditions of practice	0	0	0	0	1	0	3	0	3	1	1	1	1	2	0	1	0	2	1	3	1	0	5	5	7	10	11			
Caution	4	1	2	0	2	2	1	2	4	2	1	3	6	2	3	8	4	0	3	1	6	6	8	32	28	24	39			
No further action	0	3	0	0	1	1	0	2	0	0	0	0	2	0	1	1	0	3	0	0	0	0	4	6	4	7	7			
Not well founded	4	5	3	1	0	6	3	3	2	2	4	3	3	4	3	4	3	5	9	2	10	8		0	19	36	51			
Adjourned/part heard	4	2	2	2	0	0	2	1	3	7	6	6	3	5	10	5	6	7	10	5	9	8	22	22	32	35	68			
Cancelled	2	1	0	1	0	1	5	1	0	7	1	2	0	0	0	0	0	4	1	1	0	5		0	24	21	11			
Referred to Health	0	0	0	0	0	0	0	0	0	0	0	0	0	0	0	0	0	0	1	0	0	1	1	0	1	0	2			
Removed - consent	Not available												1	0	0	0	0	0	1	1	0	0					3			
CC cases to be heard	171	174	176	189	213	193	191	206	193	200	180	182	184	192	198	190	208	194	205	214	216	224	59	59	172	117	224			

		2008			2009									2010									2005/6	2006/7	2007/8	2008/9	09/10			
		Apr	May	Jun	Jul	Aug	Sep	Oct	Nov	Dec	Jan	Feb	Mar	Apr	May	Jun	Jul	Aug	Sep	Oct	Nov	Dec	Jan	Feb	Mar	FYE	FYE	FYE	FYE	YTD
Health Committee	Health cases listed	0	0	0	0	0	0	0	0	0	0	2	0	1	0	0	0	0	0	1	0	0	3	8	7	9	2	5		
	Suspended	0	0	0	0	0	0	0	0	0	0	1	0	1	0	0	0	0	0	0	0	0	1	2	2	5	1	2		
	Conditions of practice	0	0	0	0	0	0	0	0	0	0	1	0	0	0	0	0	0	0	0	0	0	1	3	1	0	1	1		
	Caution	0	0	0	0	0	0	0	0	0	0	0	0	0	0	0	0	0	0	0	0	0	0	0	0	0	0	0		
	No further action	0	0	0	0	0	0	0	0	0	0	0	0	0	0	0	0	0	0	0	0	0	0	0	1	0	0	0		
	Not well founded	0	0	0	0	0	1	0	0	0	0	0	0	0	0	0	0	0	0	1	0	0	1	Not recorded		1	1	2		
	Adjourned/part heard	0	0	0	0	0	0	0	0	0	0	0	0	0	0	0	0	0	0	0	0	0	0	Not recorded		1	0	0		
	Cancelled	0	0	0	0	0	0	0	0	0	0	0	0	0	0	0	0	0	0	0	0	0	0	Not recorded		2	0	0		
	Referred to C&C	0	0	0	0	0	0	0	0	0	0	0	0	0	0	0	0	0	0	0	0	0	0	Not recorded		0	0	0		
	Hlth cases to be heard	5	5	5	6	6	5	5	6	7	5	5	5	6	7	8	8	8	8	8	8	8	6	7	7	4	5	8		
Investigating	Removed												1	1	0	0	0	0	0	0	0	0					2			
	Amended												0	0	0	0	0	0	0	0	0	0					0			
	Not well found												0	0	0	0	0	0	0	0	0	0					0			
	Adjourned/part heard												0	0	0	0	0	0	0	0	0	0					0			

	2008												2009												2010												2005/6	2006/7	2007/8	2008/9	09/10
	Apr	May	Jun	Jul	Aug	Sep	Oct	Nov	Dec	Jan	Feb	Mar	Apr	May	Jun	Jul	Aug	Sep	Oct	Nov	Dec	Jan	Feb	Mar	Apr	May	Jun	Jul	Aug	Sep	Oct	Nov	Dec	Jan	Feb	Mar	FYE	FYE	FYE	FYE	YTD
CCC and HC Review Hearings	Review cases listed	7	8	12	8	7	4	12	11	0	7	8	9	3	9	8	2	9	9	10	14	8	9														41	67	67	81	
	Struck off	0	0	0	0	1	0	5	2	0	1	4	4	2	5	3	1	1	1	2	7	3	3															10	17	28	
	Suspension continued	4	7	5	4	5	3	5	7	0	5	2	4	1	3	4	0	4	3	4	4	2	3															37	51	28	
	Conditions continued	1	1	0	1	0	0	0	0	0	0	0	0	0	0	1	0	0	3	0	0	2	0															2	3	6	
	Suspension revoked	0	0	0	0	0	1	0	2	0	1	0	1	0	0	0	0	3	0	2	1	0	1															2	5	7	
	Suspension revoked conditions imposed	0	0	0	2	1	0	0	0	0	0	0	0	0	0	0	0	0	1	1	0	1	1															1	3	4	
	Suspension revoked caution imposed	1	0	0	0	0	0	0	0	0	0	0	0	0	0	0	0	0	0	0	0	0	0															0	1	0	
	Conditions revoked	0	0	0	0	0	0	1	0	0	0	1	0	0	1	0	0	1	1	0	1	0	0															5	2	4	
	Conditions revoked suspension imposed	0	0	0	0	0	0	1	0	0	0	0	0	0	0	0	0	0	0	0	1	0	0															5	1	1	
	Conditions revoked caution imposed	0	0	0	0	0	0	0	0	0	0	0	0	0	0	0	1	0	0	0	0	0	0															1	0	1	
	Adjourned/part heard	1	0	0	1	0	0	0	0	0	0	1	0	0	0	0	0	0	0	0	0	0	0															3	3	0	
	Cancelled													0	0	0	0	0	0	0	0	0	1																	1	
	Review cases to be Heard	92	93	90	91	90	89	90	92	93	93	92	90	92	90	91	94	89	97	99	100	103	104														69	90	90	104	

Representation

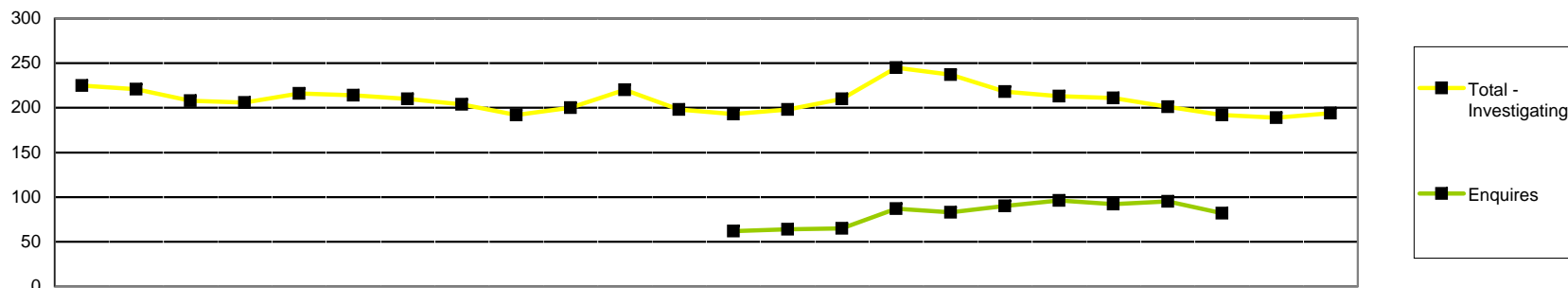
Final Hearings-CCC														2009/10 YTD
Struck off	Suspended	Conditions of Practice	Caution	No Further Action	Not Well Founded	NR	Referred to Health	Removed	Register entry amended	Restored	Not restored	Vol Removal (Consent)		
Represented self	10	3	1	13	1	10	0	0	0	0	0	0	1	39
Representative	3	11	11	20	4	35	0	1	0	0	0	0	1	86
None	40	25	0	6	2	7	0	1	2	0	0	0	1	84
Total	53	39	12	39	7	52	0	2	2	0	0	0	3	209

Profession	Represented self	Representative	None	% of representation
Arts therapists	7	3	3	77
Biomedical scientists	6	8	8	64
Chiropodists & podiatrists	2	9	1	92
Clinical scientists	0	1	2	33
Dietitians	0	1	0	0
Occupational therapists	6	8	12	54
ODPs	6	6	13	48
Orthoptists	0	0	1	0
Paramedics	4	19	27	46
Physiotherapists	1	20	11	66
Practitioner psychologists	0	0	0	0
Prosthetists & orthotists	0	0	0	0
Radiographers	5	8	4	76
SLTs	2	3	2	71

The above tables do not include cases that were adjourned, postponed or cancelled

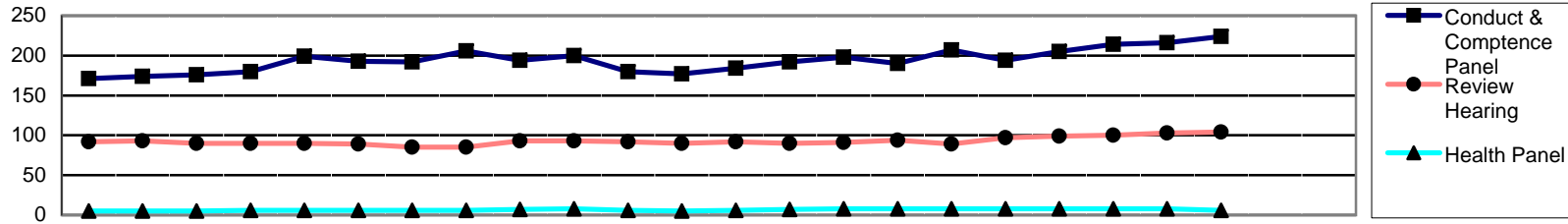
	Final Hearings												
	Struck off	Suspended	Conditions of Practice	Caution	No Further Action	Not Well Founded	NR	Referred to Health	Removed	Register entry amended	Restored	Not restored	Vol Removal (Consent)
Arts therapists	10	0	0	0	2	1	0	0	0	0	0	0	0
Biomedical scientists	4	5	2	6	1	3	0	0	1	0	0	0	0
Chiropodists & podiatrists	0	1	2	2	0	7	0	0	0	0	0	0	0
Clinical scientists	2	0	0	0	0	1	0	0	0	0	0	0	0
Dietitians	0	0	0	0	0	1	0	0	0	0	0	0	0
Occupational therapists	6	4	1	1	0	10	0	1	1	0	0	0	2
ODPs	8	4	0	5	4	4	0	0	0	0	0	0	0
Orthoptists	0	1	0	0	0	0	0	0	0	0	0	0	0
Paramedics	18	8	1	16	0	7	0	0	0	0	0	0	0
Physiotherapists	4	10	3	3	0	11	0	1	0	0	0	0	0
Practitioner psychologists	0	0	0	0	0	0	0	0	0	0	0	0	0
Prosthetists & orthotists	0	0	0	0	0	0	0	0	0	0	0	0	0
Radiographers	1	4	2	5	0	4	0	0	0	0	0	0	1
SLTs	0	2	1	1	0	3	0	0	0	0	0	0	0
Total 2009/10 YTD	53	39	12	39	7	52	0	2	2	0	0	0	3
Total 2008/2009 FYE	67	25	12	24	4	39	0	0			0	0	
Total 2007/2008 FYE	37	35	5	30	23	24	0	0			0	0	
Total 2006/2007 FYE	24	19	5	25	6	15	1	2			0	0	
Total 2005/2006 FYE	9	20	6	9	3	1	6	3			0	0	

	Review Hearings										
	Struck off	Suspension continued	Suspension revoked	Suspension revoked caution imposed	Suspension revoked conditions imposed	Conditions continued	Conditions revoked	Conditions revoked caution imposed	Conditions revoked suspension imposed	Adjourned/P art Heard	Vol Removal (Consent)
Arts therapists	0	0	0	0	0	0	0	0	0	0	0
Biomedical scientists	0	3	0	0	0	0	0	1	0	0	0
Chiropodists & podiatrists	1	1	2	0	1	1	0	1	0	0	0
Clinical scientists	1	0	0	0	0	0	0	0	0	0	0
Dietitians	2	1	0	0	0	0	0	0	0	0	0
Occupational therapists	3	10	1	0	0	0	0	0	0	0	1
ODPs	2	3	1	0	0	0	0	0	0	0	0
Orthoptists	0	0	0	0	0	0	0	0	0	0	0
Paramedics	5	1	1	1	0	0	1	0	1	0	0
Physiotherapists	11	5	2	0	1	3	1	0	0	0	0
Practitioner psychologists	0	0	0	0	0	3	0	0	0	0	0
Prosthetists & orthotists	0	1	0	0	0	0	0	0	0	0	0
Radiographers	1	3	2	0	0	0	0	0	0	0	0
SLTs	0	0	0	0	1	0	0	0	0	0	0
Total 2009/10 YTD	26	28	9	1	3	7	3	1	1	0	1
Total 2008/2009YTD	16	51	8	2	3	3	1	0	0	3	0
Total 2007/2008 FYE	8	25	2	0	0	3	0	0	0	4	0
Total 2006/2007 FYE	Not available										
Total 2005/2006 FYE	Not available										



	2008			2009									2010									2005/6 FYE	2006/7 FYE	2007/8 FYE	2008/9 FYE	09/10 YTD			
	Apr	May	Jun	Jul	Aug	Sep	Oct	Nov	Dec	Jan	Feb	Mar	Apr	May	Jun	Jul	Aug	Sep	Oct	Nov	Dec						Jan	Feb	Mar
Enquires																													
Arts therapists													0	0	0	0	1	0	1	0	0	0	0						0
Biomedical scientists													2	2	3	2	5	8	9	9	7	5							5
Chiropodists & podiatrists													4	4	2	5	4	6	7	5	6	4							4
Clinical scientists													1	1	1	1	1	0	1	0	0	0							0
Dietitians													6	6	5	5	1	2	2	2	2	2							2
Occupational therapists													10	15	15	10	11	8	11	9	11	8							8
ODPs	Not available												12	8	8	8	7	8	5	5	4	3							3
Orthoptists													0	0	0	0	0	0	0	0	0	0							0
Paramedics													11	13	13	15	15	18	16	16	14	12							12
Physiotherapists													12	11	12	9	7	11	18	17	19	16							16
Practitioner psychologists*													N/A	N/A	0	26	24	20	15	16	16	22							22
Prosthetists & orthotists													1	0	1	0	0	0	0	0	0	0							0
Radiographers													2	3	3	3	2	4	6	7	7	5							5
SLTs													1	1	2	3	5	5	5	6	9	5							5
Total - Enquiries													62	64	65	87	83	90	96	92	95	82							82
Investigating Panel																													
Arts therapists	1	3	6	8	7	6	2	0	0	0	0	1	1	1	1	3	2	4	3	2	2	1	2	3	1	1	1		
Biomedical scientists	11	12	16	26	27	27	20	17	16	17	13	14	11	10	10	12	10	11	13	11	15	12	5	10	13	14	12		
Chiropodists & podiatrists	17	17	19	27	28	29	34	36	34	28	26	27	25	26	28	28	29	25	24	26	25	25	24	26	18	27	25		
Clinical scientists	2	3	2	3	4	5	4	4	4	4	4	4	4	4	3	3	3	4	4	4	3	4	3	4	3	4	4		
Dietitians	4	2	3	3	2	1	0	0	0	0	0	0	1	1	2	3	7	5	5	1	1	1	1	3	4	0	1		
Occupational therapists	28	23	25	23	26	21	27	30	29	26	27	29	33	33	29	34	33	40	38	29	29	30	14	19	22	29	30		
ODPs	16	18	20	23	25	22	24	24	23	24	22	26	27	29	20	16	14	13	11	15	16	21	14	15	18	26	21		
Orthoptists	1	1	1	1	0	0	0	0	0	0	0	0	0	0	0	0	0	0	0	0	0	0	0	1	1	0	0		
Paramedics	36	42	43	40	38	41	42	40	34	37	38	35	37	44	50	65	63	57	68	67	69	65	19	47	40	35	65		
Physiotherapists	40	44	43	52	50	40	37	35	37	33	33	39	46	47	45	43	46	49	52	56	52	51	50	55	43	39	51		
Practitioner psychologists*																													
Prosthetists & orthotists	2	2	3	2	2	2	2	1	1	1	2	2	2	2	2	2	2	4	4	3	2	2		2	2	2	2		
Radiographers	19	16	15	22	17	15	13	17	16	17	18	12	13	14	13	15	16	13	14	15	14	10	18	32	17	12	10		
SLTs	16	15	14	15	11	9	8	7	7	5	6	5	4	5	6	6	8	10	7	6	10	12	6	10	16	5	12		
Total - Investigating	193	198	210	245	237	218	213	211	201	192	189	194	204	216	209	249	263	271	286	279	290	279	158	228	198	194	279		

* Practitioner psychologists section of register opened 1st July 2009

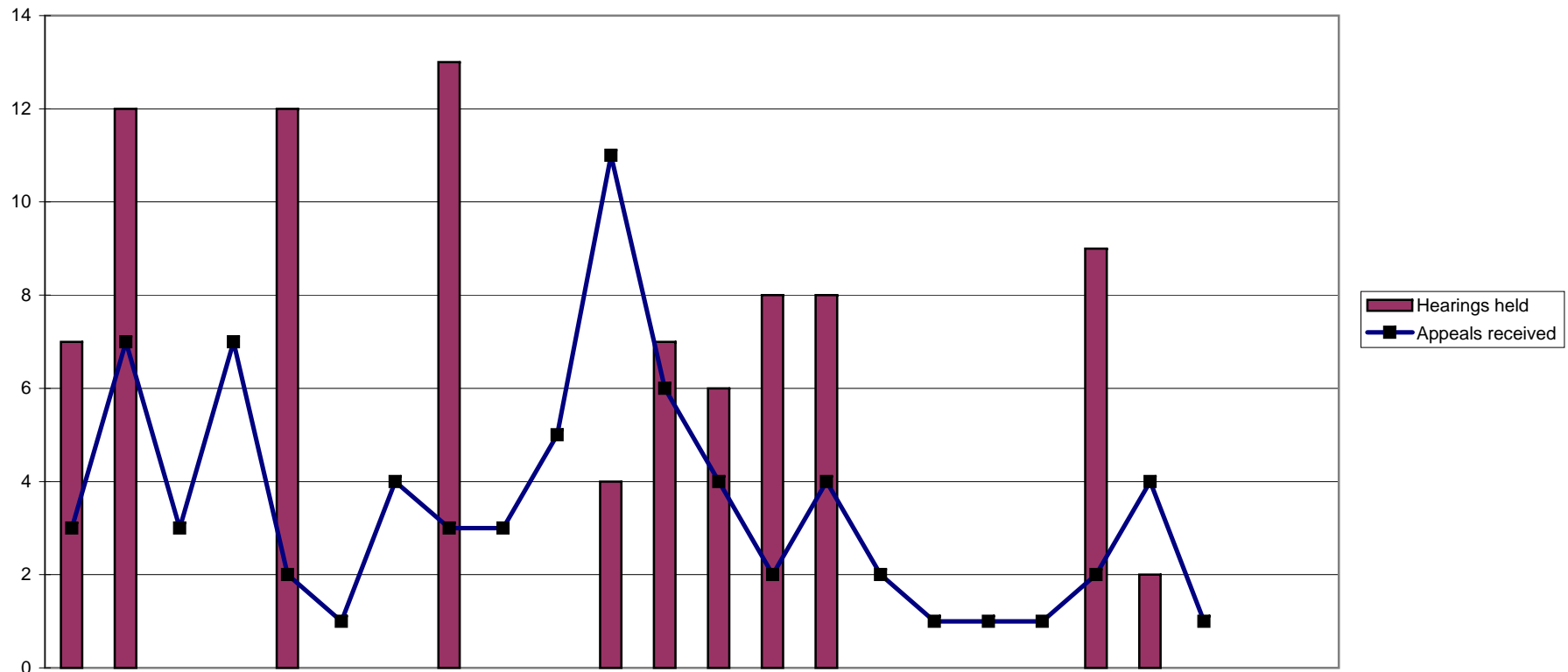


	2008											2009											2010											2005/6	2006/7	2007/8	2008/9	09/10																																			
	Apr	May	Jun	Jul	Aug	Sep	Oct	Nov	Dec	Jan	Feb	Mar	Apr	May	Jun	Jul	Aug	Sep	Oct	Nov	Dec	Jan	Feb	Mar	Apr	May	Jun	Jul	Aug	Sep	Oct	Nov	Dec	Jan	Feb	Mar	FYE	FYE	FYE	FYE	YTD																																
Conduct & Competence Panel																																																																									
Arts therapists	8	8	8	8	9	9	5	6	7	7	7	11	12	13	6	6	7	3	4	2	2	3	12	13	6	6	7	3	4	2	2	3	0	1	8	11	3																																				
Biomedical scientists	9	9	10	12	12	13	15	16	14	18	17	12	15	16	16	13	14	11	11	11	12	12	15	16	16	13	14	11	11	11	12	12	7	9	7	12	12																																				
Chiropodists & podiatrists	9	11	11	11	13	14	11	14	16	17	17	15	16	15	17	18	18	17	18	18	20	22	16	15	17	18	18	17	18	18	20	22	13	12	12	15	22																																				
Clinical scientists	5	5	6	6	7	7	7	6	6	6	4	4	4	4	3	3	3	3	3	3	3	3	4	4	3	3	3	3	3	3	3	3	1	0	3	4	3																																				
Dietitians	4	4	3	3	3	4	5	5	4	4	2	2	2	2	2	2	2	3	3	3	2	1	2	2	2	2	2	3	3	3	2	1	3	1	4	2	1																																				
Occupational therapists	17	17	16	19	18	19	17	18	17	21	22	25	26	27	26	27	27	22	28	30	27	25	26	27	26	27	27	22	28	30	27	25	12	19	19	25	25																																				
ODPs	19	20	19	18	19	16	16	15	16	20	19	15	19	22	25	25	23	22	20	17	18	18	19	22	25	25	23	22	20	17	18	18	8	9	18	15	18																																				
Orthoptists	0	0	0	0	1	1	1	1	1	1	1	1	1	1	1	0	1	0	0	0	0	1	1	1	0	1	0	0	0	0	0	0	0	0	1	0																																					
Paramedics	44	43	42	46	47	42	45	49	46	43	40	40	40	40	43	46	47	48	50	57	58	62	40	40	43	46	47	48	50	57	58	62	29	40	45	40	62																																				
Physiotherapists	28	29	34	31	35	34	34	38	35	35	28	30	29	30	34	27	32	30	29	29	32	34	29	30	34	27	32	30	29	29	32	34	14	16	28	30	34																																				
Practitioner psychologists*																							0	10	7	7	9	11	13					13																																							
Prosthetists & orthotists	0	0	0	0	0	0	0	1	1	1	1	1	1	1	1	1	1	1	1	2	2	2	1	1	1	1	1	1	1	2	2	2	4	0	0	1	2																																				
Radiographers	24	22	20	19	26	24	24	24	18	17	14	13	11	14	16	16	17	22	24	25	23	23	11	14	16	16	17	22	24	25	23	23	7	14	23	13	23																																				
SLTs	4	6	7	7	9	10	12	13	13	10	8	8	8	7	8	6	5	5	7	8	6	6	8	7	8	6	5	5	7	8	6	6	7	3	4	8	6																																				
Total - Conduct & Competence	171	174	176	180	199	193	192	206	194	200	180	177	184	192	198	190	207	194	205	214	216	224	184	192	198	190	207	194	205	214	216	224	105	124	171	177	224																																				
Health Panel																																																																									
Arts therapists	0	0	0	0	0	0	0	0	0	0	0	0	0	0	0	0	0	0	0	0	0	0	0	0	0	0	0	0	0	0	0	0	0	0	0	0	0																																				
Biomedical scientists	0	0	0	1	1	1	1	2	2	2	2	1	1	1	1	1	1	1	0	0	0	0	1	1	1	1	1	1	0	0	0	0	2	1	0	1	0																																				
Chiropodists & podiatrists	0	0	0	0	0	0	0	0	0	0	0	0	1	1	1	1	1	1	1	1	1	0	1	1	1	1	1	1	1	1	1	0	0	0	0	0	0																																				
Clinical scientists	0	0	0	0	0	0	0	0	0	0	0	0	0	0	0	0	0	0	0	0	0	0	0	0	0	0	0	0	0	0	0	0	0	0	0	0	0																																				
Dietitians	0	0	0	0	0	0	0	0	0	0	0	0	0	0	0	0	0	0	0	0	0	0	0	0	0	0	0	0	0	0	0	0	0	0	0	0	0																																				
Occupational therapists	1	1	1	1	1	1	1	1	1	1	1	1	1	0	0	0	0	1	1	1	1	2	1	0	0	0	0	1	1	1	1	2	2	2	0	1	2																																				
ODPs	0	0	0	0	0	0	0	0	0	1	0	0	0	2	2	2	2	2	3	3	3	3	0	2	2	2	2	2	3	3	3	3	1	2	0	0	3																																				
Orthoptists	1	1	1	1	1	1	0	0	0	0	0	0	0	0	0	0	0	0	0	0	0	0	0	0	0	0	0	0	0	0	0	0	0	0	1	0	0																																				
Paramedics	0	0	0	0	0	0	0	0	0	0	0	0	0	0	1	1	1	1	0	0	0	0	0	0	1	1	1	1	0	0	0	0	0	1	0	0	0																																				
Physiotherapists	0	0	0	0	0	0	1	1	1	1	1	1	1	1	1	1	1	1	2	2	2	1	1	1	1	1	1	1	2	2	2	1	2	0	0	1	1																																				
Practitioner psychologists*																							0	0	0	0	0	0	0					0																																							
Prosthetists & orthotists	0	0	0	0	0	0	0	0	0	0	0	0	0	0	0	0	0	0	0	0	0	0	0	0	0	0	0	0	0	0	0	0	0	0	0	0	0																																				
Radiographers	2	2	2	2	2	2	2	1	2	2	1	1	1	1	1	1	1	0	0	0	0	0	1	1	1	1	1	0	0	0	0	0	1	0	2	1	0																																				
SLTs	1	1	1	1	1	1	1	1	1	1	1	1	1	1	1	1	1	1	1	1	1	0	1	1	1	1	1	1	1	1	1	0	0	0	1	1	0																																				
Total - Health	5	5	5	6	6	6	6	6	7	8	6	5	6	7	8	8	8	8	8	8	8	6	6	7	8	8	8	8	8	8	8	6	8	6	4	5	6																																				

Page 15b cont Cases Pending: Review Hearings April 2008 - March 2010

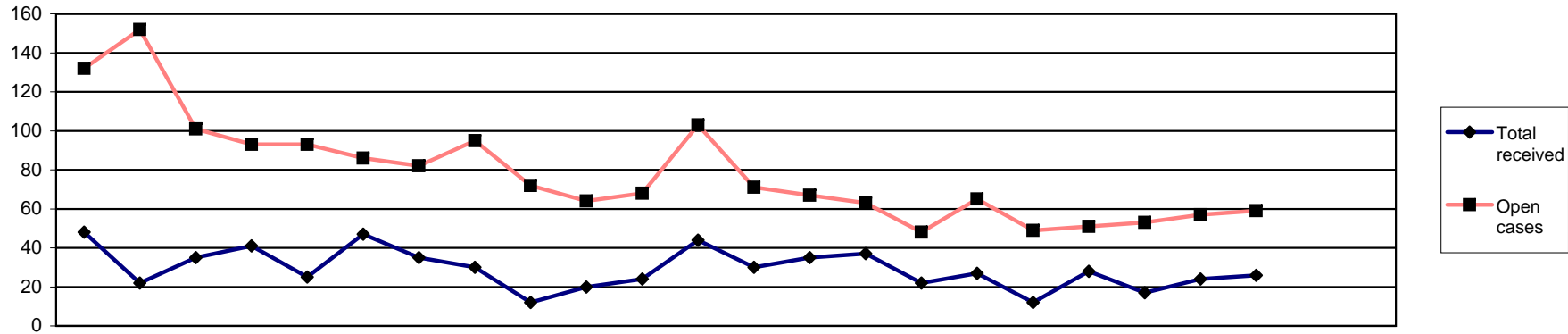
Review Hearing	2008			2009									2010									2005/6	2006/7	2007/8	2008/9	09/10		
	Apr	May	Jun	Jul	Aug	Sep	Oct	Nov	Dec	Jan	Feb	Mar	Apr	May	Jun	Jul	Aug	Sep	Oct	Nov	Dec	Jan	Feb	Mar	FYE	FYE	FYE	FYE
Arts therapists	0	0	0	0	0	0	0	0	0	0	0	0	0	0	0	0	0	0	0	0	0	0	0	0	0	0	0	0
Biomedical scientists	5	5	5	5	5	5	5	5	5	5	4	4	4	3	4	5	5	6	6	8	9	10	5	6	5	4	10	
Chiropodists & podiatrists	5	5	4	4	4	4	3	3	3	4	4	5	5	6	6	5	5	5	5	5	5	4	3	5	5	5	4	
Clinical scientists	2	2	2	2	2	2	2	2	2	2	2	2	2	2	2	2	2	2	2	1	1	1	1	2	2	2	1	
Dietitians	2	2	3	3	3	3	3	3	3	3	3	3	3	3	3	3	3	3	2	1	1	1	2	4	2	3	1	
Occupational therapists	20	21	19	19	18	19	19	19	19	17	17	16	16	15	16	17	16	17	16	16	16	16	5	10	20	16	16	
ODPs	3	3	3	3	4	4	4	5	4	4	4	6	7	8	8	7	6	6	6	7	7	7	1	2	3	6	7	
Orthoptists	0	0	0	0	0	0	0	0	0	0	0	0	0	0	0	0	0	0	1	1	1	1	0	0	0	0	1	
Paramedics	15	15	14	13	14	14	10	10	12	12	12	12	13	11	11	11	9	11	13	12	13	14	4	9	15	12	14	
Physiotherapists	30	30	29	29	29	26	27	25	28	29	28	27	27	27	24	27	26	25	25	26	24	25	18	23	30	27	25	
Practitioner psychologists*																0	0	3	3	3	3	3					3	
Prosthetists & orthotists	1	1	1	1	1	1	1	1	1	1	1	1	1	1	1	1	1	1	1	1	1	0	0	1	1	1	0	
Radiographers	4	4	5	6	5	5	6	7	11	11	11	10	10	10	12	12	12	14	14	14	16	15	2	3	3	10	15	
SLTs	5	5	5	5	5	6	5	5	5	5	6	4	4	4	4	4	4	4	5	5	6	7	3	4	4	4	7	
Total - Review hearing	92	93	90	90	90	89	85	85	93	93	92	90	92	90	91	94	89	97	99	100	103	104	44	69	90	90	104	

* Practitioner psychologists section of register opened 1st July 2009



	2008			2009									2010											
	Apr	May	Jun	Jul	Aug	Sep	Oct	Nov	Dec	Jan	Feb	Mar	Apr	May	Jun	Jul	Aug	Sep	Oct	Nov	Dec	Jan	Feb	Mar
Appeals received	3	7	3	7	2	1	4	3	3	5	11	6	4	2	4	2	1	1	1	2	4	1		
Reviewed	7	12	0	0	12	0	0	13	0	0	4	7	8	9	8	0	0	0	0	9	2	0		
Hearings held	7	12	0	0	12	0	0	13	0	0	4	7	6	8	8	0	0	0	0	9	2	0		
Adjourned/postponed	1	3	0	0	3	0	0	0	0	0	2	0	2	1	0	0	0	0	0	0	0	0		
Withdrawn	0	1	0	0	0	1	0	0	0	0	0	0	0	0	0	0	0	0	0	0	0	0		
Allowed	4	2	0	0	5	0	0	6	0	0	2	4	1	5	1	0	0	0	0	4	1	0		
Dismissed	2	4	0	0	2	0	0	5	0	0	2	2	0	1	3	0	0	0	0	1	1	0		
Substitute decision	0	0	0	0	0	0	0	0	0	0	0	0	0	0	1	0	0	0	0	2	0	0		
Remit to ETC	0	2	0	0	2	0	0	2	0	0	0	1	5	2	3	0	0	0	0	2	0	0		
Current active cases	20	20	23	24	19	19	23	13	16	21	28	29	22	16	7	9	11	12	13	6	8	9		

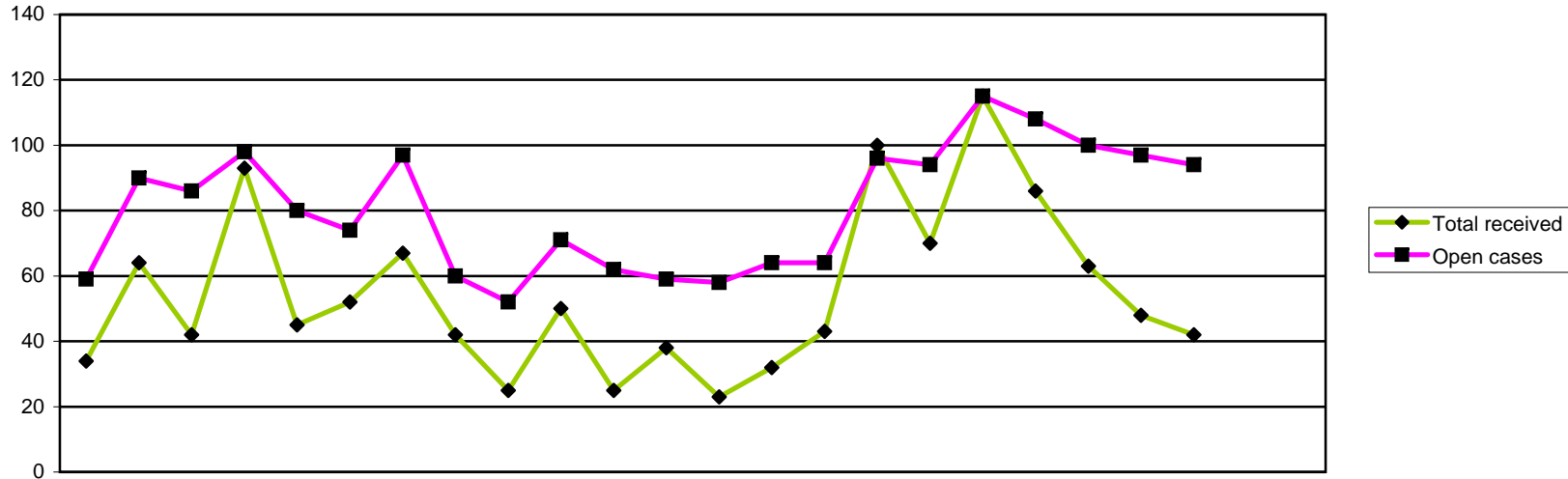
2005/6 FYE	2006/7 FYE	2007/8 FYE	2008/9 FYE	09/10 YTD
91	104	41	55	22
266	90	65	55	36
266	90	65	55	33
19	20	10	9	3
13	16	15	2	0
128	33	29	23	12
88	29	31	17	6
0	0	0	0	3
31	6	4	7	12



	2008			2009									2010											
	Apr	May	Jun	Jul	Aug	Sep	Oct	Nov	Dec	Jan	Feb	Mar	Apr	May	Jun	Jul	Aug	Sep	Oct	Nov	Dec	Jan	Feb	Mar
Public	10	1	4	15	9	4	0	2	2	2	1	6	0	1	13	3	2	2	4	1	1	2		
Police	5	5	3	4	0	8	4	7	2	3	1	2	3	2	4	3	4	3	1	5	6	3		
HPC	0	0	0	0	0	0	0	1	0	0	1	1	0	0	0	0	0	0	0	0	0	0		
Anonymous	5	2	4	6	2	6	9	0	0	3	4	6	2	2	4	1	4	2	4	1	0	7		
Professional	28	14	24	16	14	29	22	20	8	12	17	29	25	29	16	15	16	5	19	10	17	14		
Total received	48	22	35	41	25	47	35	30	12	20	24	44	30	35	37	22	27	12	28	17	24	26		
Visits	0	0	0	0	0	0	0	0	1	0	0	0	0	1	1	0	1	0	0	0	0	0		
Open cases	132	152	101	93	93	86	82	95	72	64	68	103	71	67	63	48	65	49	51	53	57	59		

2005/6 FYE	2006/7 FYE	2007/8 FYE	2008/9 FYE	09/10 YTD
53	21	42	56	29
31	38	27	44	34
10	10	6	3	0
50	78	38	47	27
225	137	103	233	166
369	284	216	383	256
			3	3

583



		2008			2009								2010						2005/6	2006/7	2007/8	2008/9	09/10							
		Apr	May	Jun	Jul	Aug	Sep	Oct	Nov	Dec	Jan	Feb	Mar	Apr	May	Jun	Jul	Aug	Sep	Oct	Nov	Dec	Jan	Feb	Mar	FYE	FYE	FYE	FYE	YTD
Received	Renewal	4	14	9	8	2	0	4	2	0	0	0	0	0	1	11	9	14	54	30	21	11	2	36	27	81	43	153		
	Readmission	7	14	15	6	5	8	5	7	9	6	3	9	2	5	3	6	5	5	5	7	5	3	33	40	34	94	46		
	Admission	7	12	8	46	25	30	42	15	10	27	10	16	10	10	15	60	37	36	33	20	21	19	165	150	158	248	261		
	Self referral	16	24	10	33	13	14	16	18	6	17	12	13	11	16	14	25	14	20	18	15	11	18	54	86	158	192	162		
Total received		34	64	42	93	45	52	67	42	25	50	25	38	23	32	43	100	70	115	86	63	48	42	288	303	431	577	622		
Considered	Considered by panel	18	34	24	39	40	49	38	55	23	21	35	23	16	21	23	37	52	30	43	48	32	30	n/a	n/a	256	399	332		
	Referred to FTP	0	15	2	2	1	5	4	2	3	1	4	2	2	2	5	6	6	1	8	10	4	4	n/a	n/a	37	41	48		
	Admission rejected	0	0	0	0	1	1	0	1	1	0	2	0	0	1	0	0	0	0	0	1	0	0	n/a	n/a	2	6	2		
	Readmission rejected	0	0	0	1	0	1	0	1	3	0	1	1	0	3	0	0	0	0	0	1	0	2	n/a	n/a	3	8	6		
	Renewal rejected	0	0	0	0	0	1	1	0	0	0	0	0	0	0	0	0	0	0	0	1	0	0	n/a	n/a	0	2	1		
	Not referred to FTP	5	9	4	7	9	5	12	8	4	5	6	8	2	6	5	5	3	4	7	6	2	8	n/a	n/a	34	82	48		
	Admission accepted	10	4	7	25	26	31	19	36	11	10	18	7	10	7	12	24	37	22	24	18	21	11	n/a	n/a	150	204	186		
	Readmission accepted	3	6	10	2	2	5	2	7	1	5	3	5	2	2	2	2	6	2	1	7	3	3	n/a	n/a	19	51	30		
	Renewal accepted	0	0	1	2	1	0	0	0	0	0	1	0	0	0	1	0	0	1	3	4	0	2	n/a	n/a	1	5	11		
	Closed before panel													6	6	16	28	10	15	11	4	5	14					115		
Open cases		59	90	86	98	80	74	97	60	52	71	62	59	58	64	64	96	94	115	108	100	97	94	n/a	n/a	75	75	94		