

Human Resources, Partners – Kathryn Neuschafer

Recruitment

Eleven Legal Assessors were recruited from the recent recruitment campaign.

Two Clinical Scientists – Clinical Physiology Registration Assessors were made offers from the recent round of interviews.

Recruitment is currently being undertaken to recruit partners in the Dietitian and Podiatry professions. There are vacancies for Panel member, Visitor and Registration Assessor in Dietetics and vacancies for Panel Member and Visitor for Podiatry.

Training

Panel Chair refresher training is scheduled for April and we are currently scheduling refresher training for all Panel Members across 2010-2011.

Partner Assessment

There was a good response to the Panel Member and Panel Chair self assessment profile submission. Eight partners failed to submit a profile, three opposed completing a self assessment profile and five partners confirmed their resignation in line with the agreement expiry.

Partner Agreement

The Partner Department are currently working with the HPC's Solicitor to draft a revised suite of contractual agreements to accommodate the requirements for different partner roles and improve the existing agreement.

Partner Resignations

Seven panel members and one Registration Assessor resigned during March.

Partner Department

Eva Nordstrom-Amy has commenced in the role as Partner Administrator to assist with the partner assessment/appraisal processes.

NB the volumes for panel members, visitors, registration assessors and CPD assessors include some partners performing several roles

Panel members and visitors

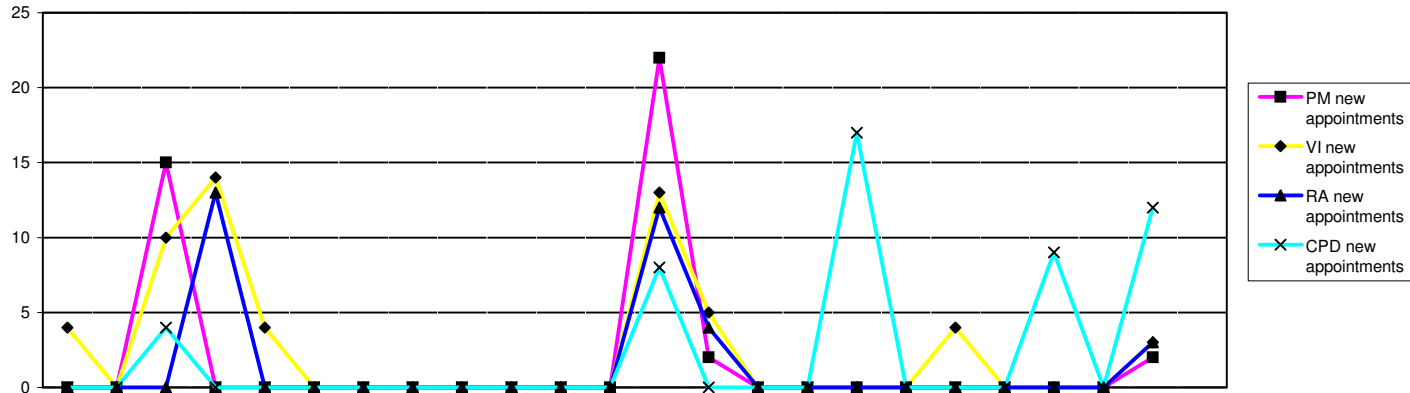
Panel Members	2008												2009												2010												2008/9	09/10	10/11
	Apr	May	Jun	Jul	Aug	Sep	Oct	Nov	Dec	Jan	Feb	Mar	Apr	May	Jun	Jul	Aug	Sep	Oct	Nov	Dec	Jan	Feb	Mar	Apr	May	Jun	Jul	Aug	Sep	Oct	Nov	Dec	Jan	Feb	Mar	FYE	YTD	Forecast
Arts therapists	5	5	5	5	5	5	2	2	2	0	0	0	0	0	0	9	9	9	9	9	9	9	8	8	0	0	0	9	9	9	9	9	9	9	8	8	0	8	9
Biomedical scientists	18	18	18	18	18	18	18	18	18	18	18	18	18	18	18	14	14	14	14	14	14	14	14	14	18	18	18	14	14	14	14	14	14	14	14	14	18	14	14
Chirops & podiatrists	9	9	9	9	9	9	9	9	9	9	8	8	8	8	8	8	8	8	8	8	8	8	8	8	8	8	8	8	8	8	8	8	8	8	8	8	8	13	
Clinical scientists	30	30	30	30	30	30	30	30	30	29	29	29	29	29	29	27	27	26	26	26	26	26	25	29	29	29	27	27	26	26	26	26	26	26	25	29	25	26	
Dietitians	6	6	6	6	6	6	6	6	6	6	6	6	6	6	6	6	6	6	6	6	6	6	5	6	6	6	6	6	6	6	6	6	6	6	5	6	5	6	
Hearing aid dispensers+	Not previously required												Not previously required														10												
Occupational therapists	8	8	8	11	11	11	11	11	11	11	11	11	11	11	11	10	10	10	10	10	10	10	10	11	11	11	10	10	10	10	10	10	10	10	10	11	10	10	
ODPs	10	10	10	12	12	12	12	12	12	12	12	12	12	12	12	11	10	10	10	10	10	10	10	12	12	12	11	10	10	10	10	10	10	10	10	12	10	15	
Orthoptists	6	6	6	6	6	6	5	5	5	5	5	5	5	5	5	6	6	6	6	6	6	6	6	5	5	5	6	6	6	6	6	6	6	6	6	5	6	6	
Paramedics	14	14	14	14	14	14	14	14	14	14	14	14	14	14	14	14	16	16	16	16	16	16	15	14	14	14	14	16	16	16	16	16	16	16	15	14	15	16	
Physiotherapists	32	32	32	32	32	32	31	31	31	29	28	28	28	28	28	29	29	27	27	27	27	27	27	28	28	28	29	29	27	27	27	27	27	27	27	28	27	27	
Practitioner psychologists	Not previously required												23	23	23	24	25	25	25	25	25	25	27	28			25												
Prosthetists & orthotists	3	3	3	5	5	5	4	4	4	3	2	2	2	2	2	6	6	6	6	6	6	6	6	2	2	2	6	6	6	6	6	6	6	6	6	2	6	6	
Radiographers	19	19	19	20	20	20	20	20	20	20	20	20	20	20	20	18	18	18	17	17	17	17	17	20	20	20	18	18	18	17	17	17	17	17	17	20	17	17	
SLTs	12	12	12	12	12	12	12	12	12	12	12	12	12	12	12	12	11	11	11	11	11	11	10	12	12	12	12	11	11	11	11	11	11	11	10	12	10	11	
Lay members	39	39	39	39	39	39	39	39	39	39	39	39	39	39	39	31	30	30	30	30	30	30	27	39	39	39	31	30	30	30	30	30	30	30	27	39	27	40	
Total	211	211	211	219	219	219	213	213	213	207	204	204	227	227	227	225	225	222	221	221	221	222	216	204	216	251													
Visitors																									FYE	YTD	Forecast												
Arts therapists	15	15	15	15	15	15	15	15	15	15	15	15	15	15	15	15	14	14	14	14	14	14	14	15	15	15	15	14	14	14	14	14	14	14	15	14	22		
Biomedical scientists	11	11	11	11	11	11	12	12	12	12	12	12	12	12	12	12	12	12	12	12	12	12	12	12	12	12	12	12	12	12	12	12	12	12	12	12	12	11	
Chirops & podiatrists	11	11	11	11	11	11	11	11	11	11	11	11	11	11	11	10	9	9	9	9	9	9	9	11	11	11	10	9	9	9	9	9	9	9	11	9	10		
Clinical scientists	6	6	6	6	6	6	5	5	5	5	5	5	5	5	5	9	9	9	9	9	9	9	9	5	5	5	9	9	9	9	9	9	9	9	5	9	5		
Dietitians	6	6	6	6	6	6	5	5	5	5	5	5	5	5	5	8	8	8	8	8	8	8	8	5	5	5	8	8	8	8	8	8	8	8	5	8	9		
Hearing aid dispensers+	Not previously required												Not previously required														4												
Occupational therapists	10	10	10	10	10	10	14	14	14	14	14	14	14	14	14	15	15	15	15	15	15	15	15	14	14	14	15	15	15	15	15	15	15	15	14	15	16		
ODPs	10	10	10	10	10	10	10	10	10	10	10	10	10	10	10	10	11	11	11	11	11	10	10	10	10	10	10	11	11	11	10	10	10	10	10	10	10		
Orthoptists	5	5	5	5	5	5	6	6	6	6	6	6	6	6	6	5	5	5	5	5	5	5	5	6	6	6	5	5	5	5	5	5	5	5	6	5	2		
Paramedics	14	14	14	14	14	14	17	17	17	17	17	17	17	17	17	16	16	16	16	16	16	16	16	17	17	17	16	16	16	16	16	16	16	16	17	16	16		
Physiotherapists	17	17	17	17	17	17	16	16	16	16	16	16	16	16	16	14	13	13	13	13	13	13	13	16	16	16	14	13	13	13	13	13	13	13	16	13	15		
Practitioner psychologists	Not previously required												19	19	19	15	24	22	26	26	26	26	29	29			32												
Prosthetists & orthotists	4	4	4	4	4	4	4	4	4	4	4	4	4	4	4	4	4	4	4	4	4	4	4	4	4	4	4	4	4	4	4	4	4	4	4	4	3		
Radiographers	17	17	17	17	17	17	17	17	17	17	17	17	17	17	17	16	16	16	16	16	16	16	16	17	17	17	16	16	16	16	16	16	16	16	17	16	13		
SLTs	10	10	10	10	10	10	11	11	11	11	11	11	11	11	11	10	10	10	10	10	10	10	10	11	11	11	10	10	10	10	10	10	10	10	11	10	10		
Lay members	4	4	4	4	4	4	4	4	4	4	4	4	4	4	4	4	4	4	4	4	4	4	4	4	4	4	4	4	4	4	4	4	4	4	4	4	4		
Total	140	140	140	140	140	140	147	147	147	147	147	147	166	166	166	163	170	168	172	172	171	171	174	174	147	174	182												

+ Hearing aid dispensers section of register will open 1st April 2010

Page 20 contd - Registration assessors and CPD assessors

Registration Assessors	2008												2009												2010												2008/9	09/10	10/11
	Apr	May	Jun	Jul	Aug	Sep	Oct	Nov	Dec	Jan	Feb	Mar	Apr	May	Jun	Jul	Aug	Sep	Oct	Nov	Dec	Jan	Feb	Mar	Apr	May	Jun	Jul	Aug	Sep	Oct	Nov	Dec	Jan	Feb	Mar	YTD	YTD	Forecast
Arts therapists	8	8	8	8	8	8	6	6	6	6	6	6	6	6	6	6	6	6	6	6	6	6	6	6	6	6	6	6	6	6	6	6	6	6	6	6	6	6	6
Biomedical scientists	19	19	19	19	19	19	18	18	18	18	18	18	18	18	18	17	17	16	16	16	16	16	16	16	18	18	18	17	17	16	16	16	16	16	16	16	18	16	16
Chirops & podiatrists	15	15	15	15	15	15	17	17	17	17	17	17	17	17	17	6	5	5	5	5	5	5	5	5	17	17	17	6	5	5	5	5	5	5	5	5	17	5	5
Clinical scientists	43	43	43	43	43	43	25	25	25	25	25	25	25	25	25	23	24	23	23	23	23	23	23	23	25	25	25	23	24	23	23	23	23	23	23	23	25	23	25
Dietitians	11	11	11	11	11	11	9	9	9	9	9	9	9	9	9	9	8	8	8	8	8	8	8	7	9	9	9	9	8	8	8	8	8	8	8	7	9	7	8
Hearing aid dispensers+	Not previously required												Not previously required														5												
Occupational therapists	13	13	13	13	13	13	12	12	12	12	12	12	12	12	12	11	11	11	11	11	11	11	11	11	12	12	12	11	11	11	11	11	11	11	11	11	12	11	11
ODPs	5	5	5	5	5	5	4	4	4	4	4	4	4	4	4	4	4	4	4	4	4	4	4	4	4	4	4	4	4	4	4	4	4	4	4	4	4	4	4
Orthoptists	6	6	6	6	6	6	6	6	6	6	6	6	6	6	6	6	6	6	6	5	5	5	5	5	6	6	6	6	6	5	5	5	5	5	5	5	6	5	5
Paramedics	15	15	15	15	15	15	15	15	15	15	15	15	15	15	15	13	13	13	13	13	13	13	13	13	15	15	15	12	12	12	12	12	12	12	12	12	15	13	13
Physiotherapists	25	25	25	25	25	25	25	25	25	25	25	25	25	25	25	22	22	22	22	22	22	22	22	22	25	25	25	22	22	22	22	22	22	22	22	22	25	22	22
Practitioner psychologists	Not previously required												18	18	18	25	25	25	25	25	25	25	25	26	18	18	18	25	25	25	25	25	25	25	26	26		26	25
Prosthetists & orthotists	3	3	3	3	3	3	3	3	3	3	3	3	3	3	3	3	3	3	3	3	3	3	5	5	3	3	3	3	3	3	3	3	3	5	5	3	5	3	
Radiographers	20	20	20	20	20	20	17	17	17	17	17	17	17	17	17	17	17	17	17	17	16	16	16	16	17	17	17	17	17	17	16	16	16	16	16	16	17	16	16
SLTs	14	14	14	14	14	14	12	12	12	12	12	12	12	12	12	12	12	12	12	12	12	12	12	12	12	12	12	12	12	12	12	12	12	12	12	12	12	12	
Total	197	197	197	197	197	197	169	169	169	169	169	169	187	187	187	174	173	171	171	170	169	169	172	171	169	169	187	174	173	171	170	169	169	172	171	169	171	176	
CPD Assessors	Not previously required												Not previously required												FYE	YTD	Forecast												
Arts therapists	Not previously required												0	0	0	0	0	0	0	0	0	0	0	0	0	0	0	0	0	0	0	0	0	0	0		0	2	
Biomedical scientists	Not previously required												0	0	0	1	8	8	8	8	8	8	8	8	0	0	0	1	8	8	8	8	8	8	8		8	8	
Chirops & Podiatrists	0	14	14	14	14	14	13	13	13	13	13	13	13	13	13	13	13	13	13	13	13	13	13	13	13	13	13	13	13	13	13	13	13	13	13	13	13	13	13
Clinical scientists	Not previously required												0	0	0	0	2	2	2	2	2	2	2	2	0	0	0	0	2	2	2	2	2	2	2		2	2	
Dietitians	Not previously required												0	0	0	0	0	0	0	0	0	0	0	0	0	0	0	0	0	0	0	0	0	0	0		0	3	
Hearing aid dispensers+	Not previously required												Not previously required																										
Occupational therapists	Not previously required												0	0	0	5	10	10	10	10	10	10	10	10	0	0	0	5	10	10	10	10	10	10	10		10	10	
ODPs	0	0	7	7	7	7	10	10	10	10	10	10	10	10	10	10	10	10	10	10	10	10	10	10	10	10	10	10	10	10	10	10	10	10	10	10	10	10	
Orthoptists	Not previously required												1	1	1	2	2	2	2	2	2	2	2	2	1	1	1	2	2	2	2	2	2	2	2		2	2	
Paramedics	Not previously required												6	6	6	6	6	6	6	6	6	6	6	6	6	6	6	6	6	6	6	6	6	6	6		6	6	
Physiotherapists	Not previously required												0	0	0	0	0	0	0	0	0	0	0	12	12	0	0	0	0	0	0	0	0	12	12		12	12	
Practitioner psychologists	Not previously required												0	0	0	0	0	0	0	0	0	0	0	0	0	0	0	0	0	0	0	0	0	0	0		0	0	
Prosthetists & orthotists	Not previously required												0	0	0	0	2	2	2	2	2	2	2	2	0	0	0	0	2	2	2	2	2	2	2		2	2	
Radiographers	Not previously required												0	0	0	0	0	0	0	0	0	0	9	9	9	0	0	0	0	0	0	9	9	9	9	9		9	9
SLTs	Not previously required												0	0	0	0	3	3	3	3	3	3	3	3	0	0	0	0	3	3	3	3	3	3	3		3	3	
Total	14	21	21	21	21	21	23	23	23	23	23	23	30	30	30	37	56	56	56	56	65	65	77	77	23	23	30	37	56	56	65	65	77	77	82	23	77	82	
Legal Assessors	Not previously reported												Not previously reported												FYE	YTD	Forecast												
Panel Chair	Not previously reported												Not previously reported														19												
	Not previously reported												Not previously reported														19												

+ Hearing aid dispensers section of register will open 1st April 2010



	2008			2009												2010			2008/9 FYE	09/10 YTD							
	Apr	May	Jun	Jul	Aug	Sep	Oct	Nov	Dec	Jan	Feb	Mar	Apr	May	Jun	Jul	Aug	Sep			Oct	Nov	Dec	Jan	Feb	Mar	
Panel members																											
PM new appointments	0	0	15	0	0	0	0	0	0	0	0	0	22	2	0	0	0	0	0	0	0	0	0	2	15	26	
Resignations/Terminations	Not previously reported																		3	1	0	0	0	1		5	
Total NumberTrained	211	211	211	219	219	219	219	219	219	219	219	219	242	242	242	225	224	221	220	220	220	221	222	219	222		
Awaiting training	16	16	31	21	21	21	21	21	21	21	21	21	20	22	22	1	1	1	1	1	1	0	0	21	0		
Visitors																											
VI new appointments	4	0	10	14	4	0	0	0	0	0	0	0	13	5	0	0	0	0	4	0	0	0	3	32	25		
Resignations/Terminations	Not previously reported																		2	0	0	1	0	0		3	
Total NumberTrained	123	123	123	123	138	138	138	138	138	138	138	138	157	157	157	163	160	158	158	158	157	168	171	138	171		
Awaiting training	9	9	19	37	26	26	26	26	26	26	26	26	20	25	25	10	10	10	14	14	14	3	3	26	3		
Registration assessors																											
RA new appointments	0	0	0	13	0	0	0	0	0	0	0	0	12	4	0	0	0	0	0	0	0	0	3	13	19		
Resignations/Terminations	Not previously reported																		2	0	1	1	0	0		4	
Total NumberTrained	193	193	193	193	193	193	193	193	193	193	193	193	211	211	211	174	173	171	171	170	168	168	171	193	171		
Awaiting training	1	1	1	14	14	14	14	14	14	14	14	14	7	11	11	0	1	1	1	1	1	1	2	14	2		
CPD assessors																											
CPD new appointments	0	0	4	0	0	0	0	0	0	0	0	0	8	0	0	0	17	0	0	0	9	0	12	4	46		
Resignations/Terminations	Not previously reported																		0	0	0	0	0	0		0	
Total NumberTrained	0	0	21	21	21	21	25	25	25	25	25	25	31	37	37	37	37	52	52	52	52	65	77	25	77		
Awaiting training	22	22	5	5	5	5	1	1	1	1	1	1	2	2	2	2	4	4	4	4	13	0	0	1	0		
Legal Assessors																											
LA new appointments	Not previously reported																		0	0	0	0	0	0	0		0
Resignations/Terminations	Not previously reported																		1	0	0	0	0	0		1	
Total NumberTrained	Not previously reported																		12	12	11	11	11	11	11		11
Awaiting training	Not previously reported																		0	0	0	0	0	0	0		0
Panel Chairs																											
Panel Chair new appointments	Not previously reported																		0	0	0	0	0	0	0		0
Resignations/Terminations	Not previously reported																		0	0	1	0	0	0		1	
Total NumberTrained	Not previously reported																		19	19	20	19	19	19	19		19
Awaiting training	Not previously reported																		0	0	0	0	0	0	0		0