

Education and Training Committee – 10 March 2011

Paper title: Health and Character Declarations

Executive summary and recommendations

Introduction

This paper is intended to provide the Education and Training Committee with an update on Health and Character Declarations that have been received by the HPC. Panels are currently meeting 6 times a month.

Decision

This paper is for information only. No decision is required.

Background information

Self-referrals of health and character issues are no longer considered by Registration panels and since 2 January 2011 have been logged as FTP cases. Where they meet the standard of acceptance those referrals will follow the fitness to practice process.

Resource implications

None

Financial implications

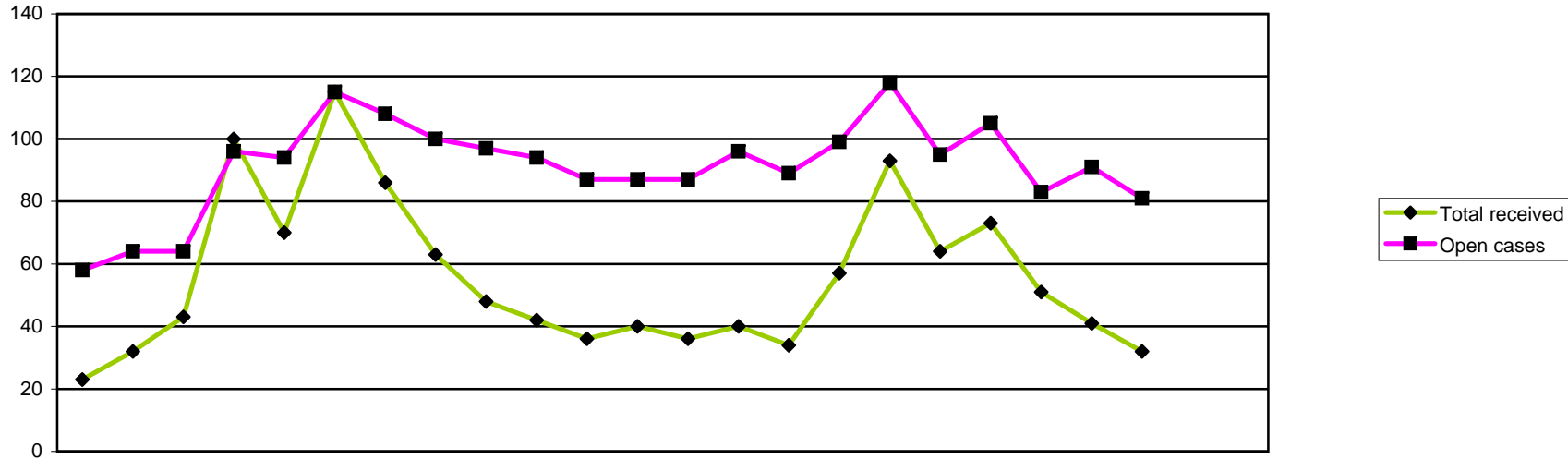
None

Appendices

Health and Character Statistics

Date of paper

23 February 2011



		2009			2010								2011						2005/6	2006/7	2007/8	2008/9	09/10	10/11							
		Apr	May	Jun	Jul	Aug	Sep	Oct	Nov	Dec	Jan	Feb	Mar	Apr	May	Jun	Jul	Aug	Sep	Oct	Nov	Dec	Jan	Feb	Mar	FYE	FYE	FYE	FYE	FYE	YTD
Received	Renewal	0	1	11	9	14	54	30	21	11	2	1	0	1	1	1	0	1	0	0	0	0	0	0	36	27	81	43	154	4	
	Readmission	2	5	3	6	5	5	5	7	5	3	2	5	3	7	9	5	14	5	3	7	5	6	33	40	34	94	53	64		
	Admission	10	10	15	60	37	36	33	20	21	19	8	13	22	12	9	31	59	38	52	30	25	26	165	150	158	248	282	304		
	Self referral	11	16	14	25	14	20	18	15	11	18	25	22	10	20	15	21	19	21	18	14	11	0	54	86	158	192	209	149		
Total received		23	32	43	100	70	115	86	63	48	42	36	40	36	40	34	57	93	64	73	51	41	32	288	303	431	577	698	521		
Considered	Considered by panel	16	21	23	37	52	30	43	48	32	30	32	23	32	28	33	38	49	61	46	52	25	35	n/a	n/a	256	399	387	399		
	Referred to FTP	2	2	5	6	6	1	8	10	4	4	7	6	4	4	9	8	5	6	10	1	4	4	n/a	n/a	37	41	61	55		
	Admission rejected	0	1	0	0	0	0	0	1	0	0	0	0	1	0	1	0	1	0	1	0	0	2	n/a	n/a	2	6	2	6		
	Readmission rejected	0	3	0	0	0	0	0	1	0	2	1	0	1	0	3	2	1	2	1	1	1	1	n/a	n/a	3	8	7	13		
	Renewal rejected	0	0	0	0	0	0	0	1	0	0	0	0	0	0	0	0	0	0	0	0	0	0	n/a	n/a	0	2	1	0		
	Not referred to FTP	2	6	4	5	3	4	7	6	2	8	12	7	9	7	8	8	9	11	3	8	10	6	n/a	n/a	34	82	66	79		
	Admission accepted	10	7	11	24	37	22	24	18	21	11	12	7	13	14	8	15	27	36	30	41	9	17	n/a	n/a	150	204	204	210		
	Readmission accepted	2	2	2	2	6	2	1	7	3	3	0	2	4	3	3	5	6	6	1	1	1	5	n/a	n/a	19	51	32	35		
	Renewal accepted	0	0	1	0	0	1	3	4	0	2	0	1	0	0	1	0	0	0	0	0	0	0	n/a	n/a	1	5	12	1		
	Closed before panel	6	6	16	28	10	15	11	4	5	14	11	17	3	3	8	7	21	28	16	22	25	7					143	140		
Open cases		58	64	64	96	94	115	108	100	97	94	87	87	87	96	89	99	118	95	105	83	91	81	n/a	n/a	75	75	87	95		