

### Approval process

The Department is coming to the end of the period of peak approvals activity between January – June 2011. There are currently 13 visits reviewing 23 programmes scheduled from June - September 2011. This includes one large scale multi-professional visit covering five professions. The schedule of visits is now closed until December 2011, as we require six months' notice. As such, education providers also have until December 2011 to request a visit before July 2012.



### Annual monitoring process

The Department is reaching the end of the peak of its annual monitoring work as we move into the summer months. Since the last Education and Training Committee meeting, the Department has held four further annual monitoring assessment days. These were held on 22 and 24 March 2011, with 10 visitors attending on each day, and on 24 and 26 May 2011, with 8 visitors attending each day.

As no further assessment days are planned this academic year, it is envisaged that the majority of the annual monitoring visitors' reports

will be considered by the Education and Training Panels in June and July 2011.

The most recent deadline for annual monitoring submissions was Tuesday 31 May 2011. The remaining submission deadlines for this academic year fall at the following times:

Thursday 30 June 2011

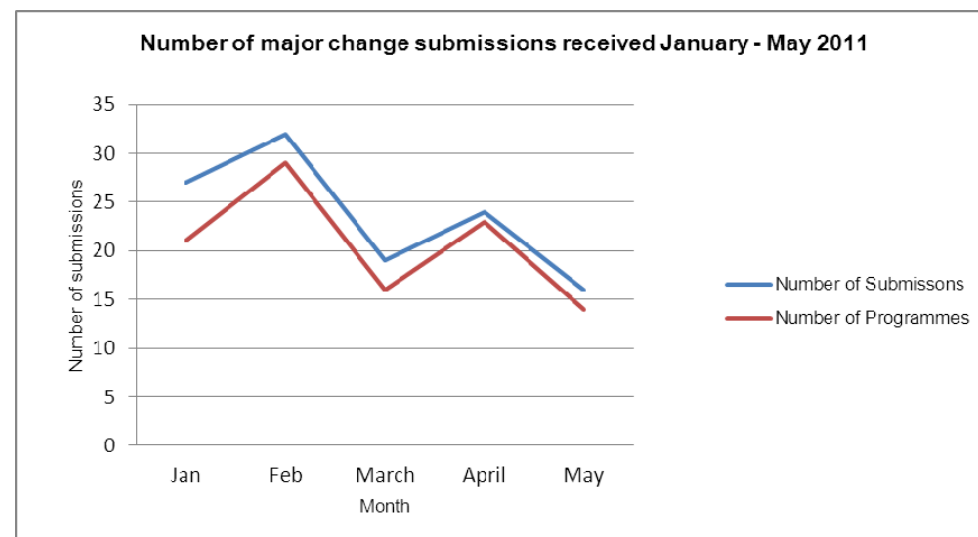
Friday 29 July 2011

Wednesday 31 August 2011

Monthly reminders continue to be sent to ensure submission of documentation from education providers.

### Major change process

Following the high volume of major change notifications received between January – March 2011, there has been a decrease in the number of submissions. Since the last Education and Training Committee meeting, we have received 48 new notifications, covering 43 programmes.



## Complaints process

The Department has processed the following education provider complaints since the inception of the education provider complaint process. The figures relate to financial, rather than academic years.

Year	Number of complaints received
2009 - 2010	6
2010 - 2011	5
2011 – 2012	1 (to date)

Year	Number of complaints	Number of approved programmes (approx)	Percentage of programmes affected by complaints
2009 - 2010	6	480	1.3%
2010 - 2011	5	630	0.8%
2011 – 2012	1	630	0.1%

Outcome	Year		
	2009-2010	2010-2011	2011 – 2012
Directed visit	0	0	0
No case to answer	4 (66%)	1 (20%)	0
Approval visit	0	0	0
Major change process	1 (16%)	0	0
Annual monitoring process	0	0	0
Withdrawn	0	1 (20%)	0
On-going	1 (16%)	3 (60%)	1 (100%)

## Practitioner psychologists

The Department has spent the last couple of months scheduling the 24 practitioner psychologists' visits across 32 programmes, which are due to be held in the next (2011–2012) academic year. 20 out of

the 24 visits (83%) have already been scheduled and we have until December 2011 to schedule the remainder.

## Hearing aid dispensers

The Department has spent the last couple of months scheduling the 11 hearing aid dispenser visits across 12 programmes which are due to be held in the next (2011–2012) academic year. 4 out of the 11 visits (36%) across 6 programmes have already been scheduled and we have until December 2011 to schedule the remainder.

## Social Workers (England)

Members of the Department continue to meet regularly with the General Social Care Council (GSCC) Social Work Education Group to discuss the transfer of approved programmes and implementation of our approval and monitoring post transfer, both of which are proceeding as planned.

Members of the Department have also met with a wider range of social work stakeholders to discuss the strategic aspects of the transfer process and communications activities. This has provided an opportunity to clarify our system of regulation and the functions undertaken by the GSCC which will not be transferred to the HPC, such as the funding of practice placements or the post-qualifying education framework.

## Modernising Scientific Careers

The Department has provided up-to-date information to education providers, clarifying the potential implications of modernising scientific careers on currently approved programmes for biomedical scientists and clinical scientists. This information, including a frequently asked questions section, was circulated via Education Update (May 2011 edition) and our website.

## **Publications**

The Department has spent the last few months working on two publications; the Introduction to the HPC's Education Process and the Education Annual Report 2010. Both of which have been brought to this Committee meeting for discussion and approval. Both publications will be made available to stakeholders via Education Update (October 2011 edition) and our website.

## **Partners**

Members of the Department have been involved in the recruitment and selection of chiropodist/podiatrist, paramedic, physiotherapist, radiographer and speech and language therapist visitors this month. Final interviews are scheduled for week commencing 13 June 2011.

## **Liaison with stakeholders**

The seventh issue of the Education Update was distributed to education providers, visitors, professional body representatives and other stakeholders on 4 May 2011 and can be found on the HPC website at <http://www.hpc-uk.org/education/update/>. The following articles were included:

- Approval visits in the 2011-12 academic year
- Approval visits in 2011-12 for practitioner psychologist and hearing aid dispenser programmes
- Health and Social Care Bill and 'Enabling Excellence' command paper
- Social workers in England
- Lay visitor pilot
- Modernising scientific careers
- Education data cleansing exercise
- Updates to the website
- New generic standards of proficiency
- Consultation on standards of proficiency and threshold level of qualification for social workers in England
- Registration renewal reminder

- HPC visitor recruitment advertisement

The next issue of the Education Update is due to be distributed in October 2011.

Members of the Department met with the following groups between March – June 2011:

- The General Social Care Council
- Department of Health (in conjunction with the Executive Management Team)
- The Quality Assurance Agency for Higher Education
- UK Standing Conference of Stakeholders in Social Work Education (in conjunction with the Policy and Standards Department)
- College of Operating Department Practitioners
- The Social Work Reform Board - Education Working Group
- Department for Education - Policy and Performance Division
- The British Psychological Society
- Exchange opportunities for Health Sciences - stakeholder meeting (organised by NUS Scotland)
- The Professional Statutory and Regulatory Bodies forum
- Academic Registrars Council - Subjects Allied to Medicine group
- Joint Social Work Unit reference group
- Norwegian Registration Authority for Health Personnel (in conjunction with the Executive Management Team)
- Head of Learning and Development, Macmillan Cancer Support
- NHS Education for Scotland

## **Work plan 2010-11 update**

At the last Committee meeting, there were a number of areas from the 2010-11 work plan which were identified as outstanding. The table below provides an update at the end of the financial year.

Area of work	Start Date	End Date	End report
Approval process review	December 2010	January 2011	Complete.
Complaints process review	September 2010	September 2010	Complete. Annual review identified in 2011-12 work plan.
Introduction to Education process document	January 2011	March 2011	Carried over into 2011-12. Publication process identified in 2011-12 work plan (Q1 & Q2).
Website review and maintenance	Ongoing	Ongoing	Complete
Small project - Database upgrade (phase 2)	July 2010	August 2010	Complete
NetRegulate approved programme list update	October 2010	March 2011	Complete
Review of generic SOPs outcomes	April 2010	May 2010	Carried over into 2011-12. Development work identified in 2011-12 work plan.
Withdrawal of approval	April 2010	June 2010	Carried over into 2011-12. BAU project identified in 2011-12 work plan.
Welsh language	April 2010	October	Carried over into

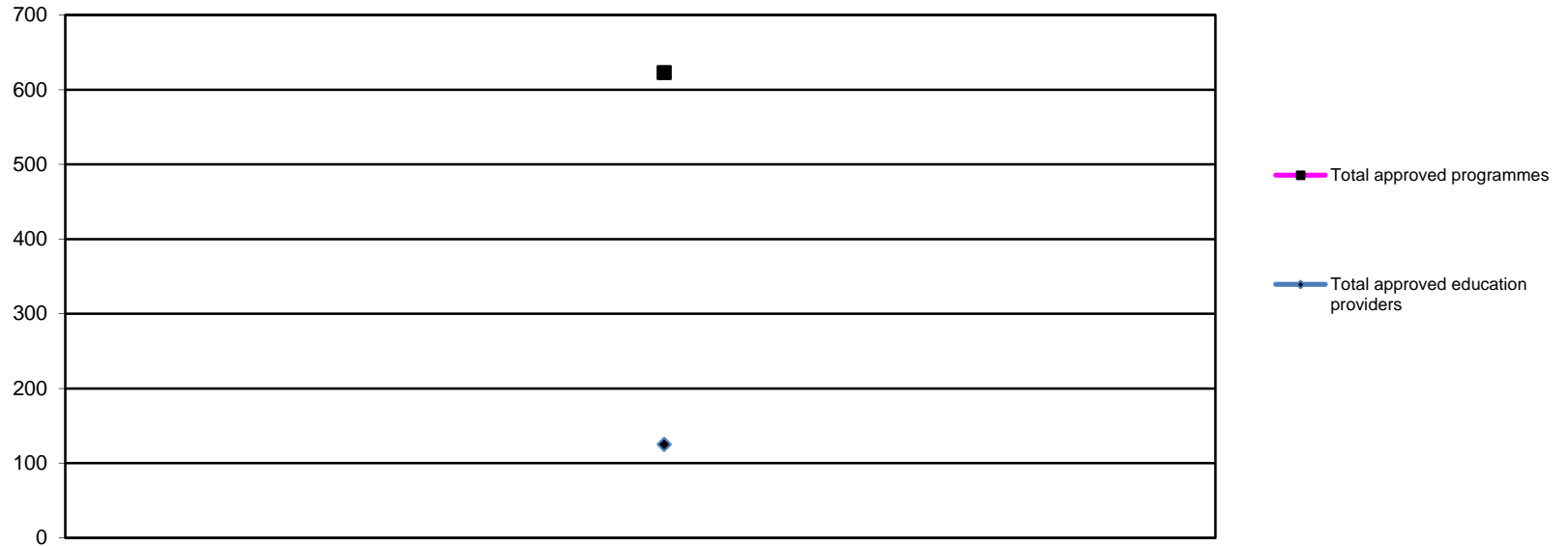
Area of work	Start Date	End Date	End report
scheme		2010	2011-12. BAU project identified in 2011-12 work plan.
Independent Safeguarding authority (Vetting and Barring Scheme)	April 2010	May 2010	Carried over into 2011-12. BAU project identified in 2011-12 work plan.
Registration Department Liaison Project	July 2010	March 2011	Complete On-going liaison work identified in 2011-12 work plan (Q1 – Q4)

#### **Work plan 2011-12 update**

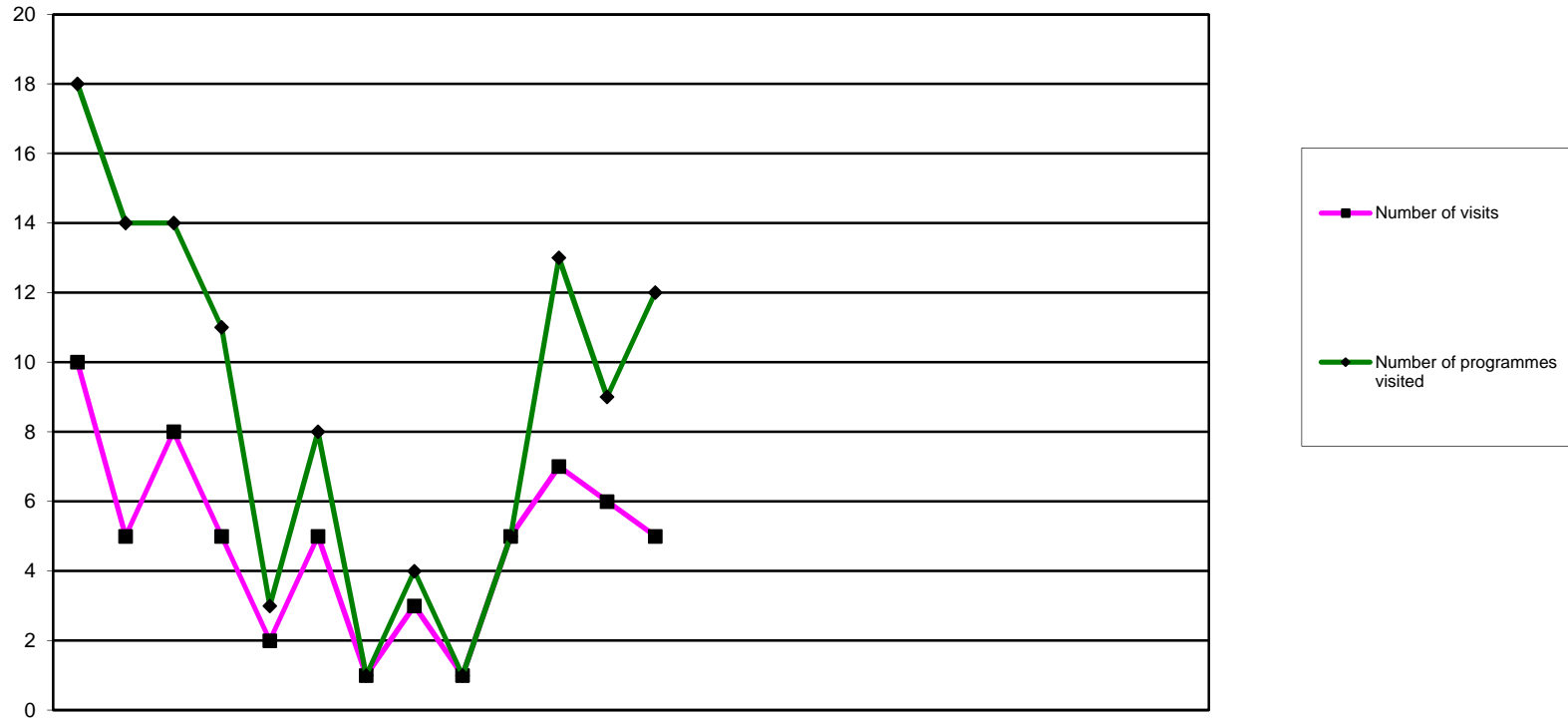
The Department has re-phased some of the timelines in the 2011-12 work plan following the pause in the Health and Social Care Bill and the associated anticipated delay in the GSCC transfer to July 2012. This re-phase has also been able to take account of the changes in the major project prioritisation process which has meant that a more staggered approach to the start of many of the major projects.

#### **Employees**

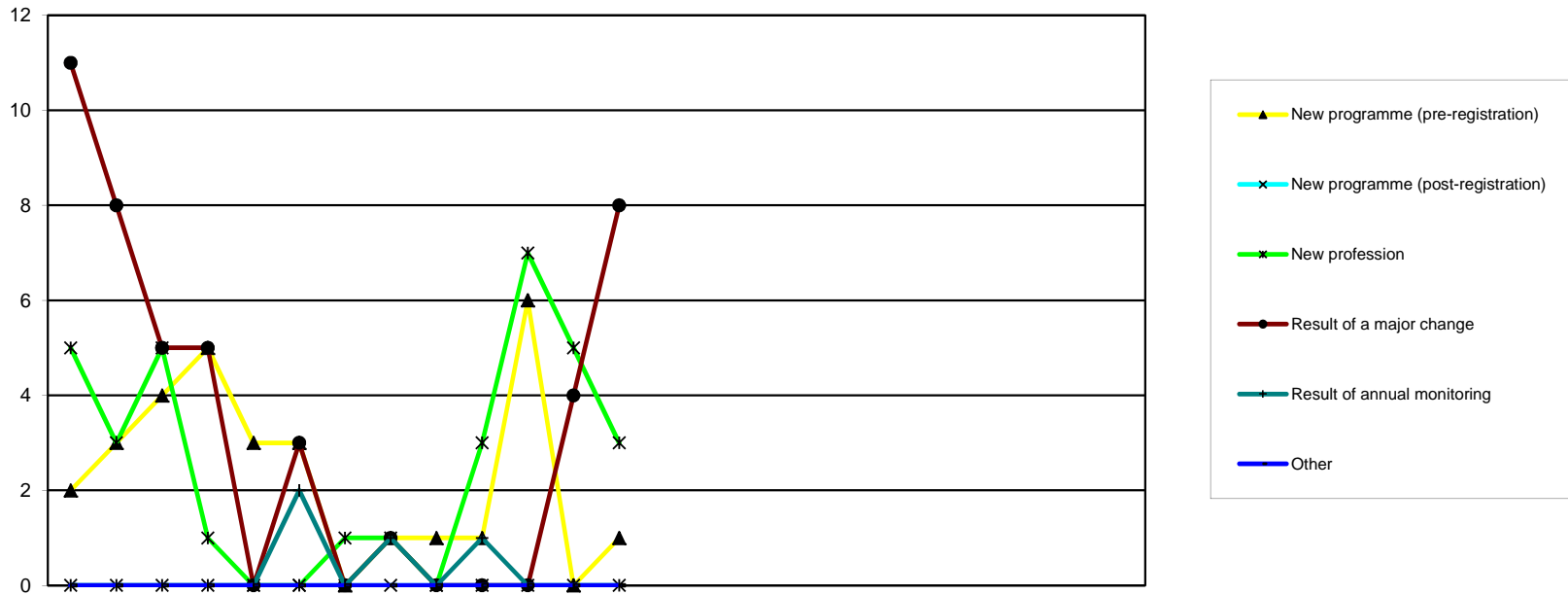
The Department is currently in the middle of a consultation period on a proposed reorganisation. The proposed reorganisation intends to see the temporary structure, in place since January 2011, becoming permanent. The reorganisation would retain the two regional multi-functional teams (responsible for much of the operational process work); strengthen the administrative and communication functions by creating a smaller dedicated team (responsible for leading much of the supporting activities work) and increase the managerial capacity to work on major project and developmental work.



	2010			2011												2012					2011/12 YTD		
	Apr	May	Jun	Jul	Aug	Sep	Oct	Nov	Dec	Jan	Feb	Mar	Apr	May	Jun	Jul	Aug	Sep	Oct	Nov		Dec	Jan
Arts therapists													27						27				
Biomedical scientists													41						41				
Chirops/ Pods													19						19				
Clinical scientists													1						1				
Dietitians													33						33				
Hearing aid disps													18						18				
OTs													73						73				
ODPs													32						32				
Orthoptists													2						2				
Paramedics													51						51				
Physiotherapists													68						68				
Practitioner psychologists													3						3				
Prosthetists/Orthotists													83						83				
Radiographers													52						52				
SLTs													32						32				
Local anaesthesia													2						2				
Prescription only medicine													8						8				
Supplementary prescribing													78						78				
<b>Total approved programmes</b>													<b>623</b>						<b>623</b>				
<b>Total approved education providers</b>													<b>125</b>						<b>125</b>				

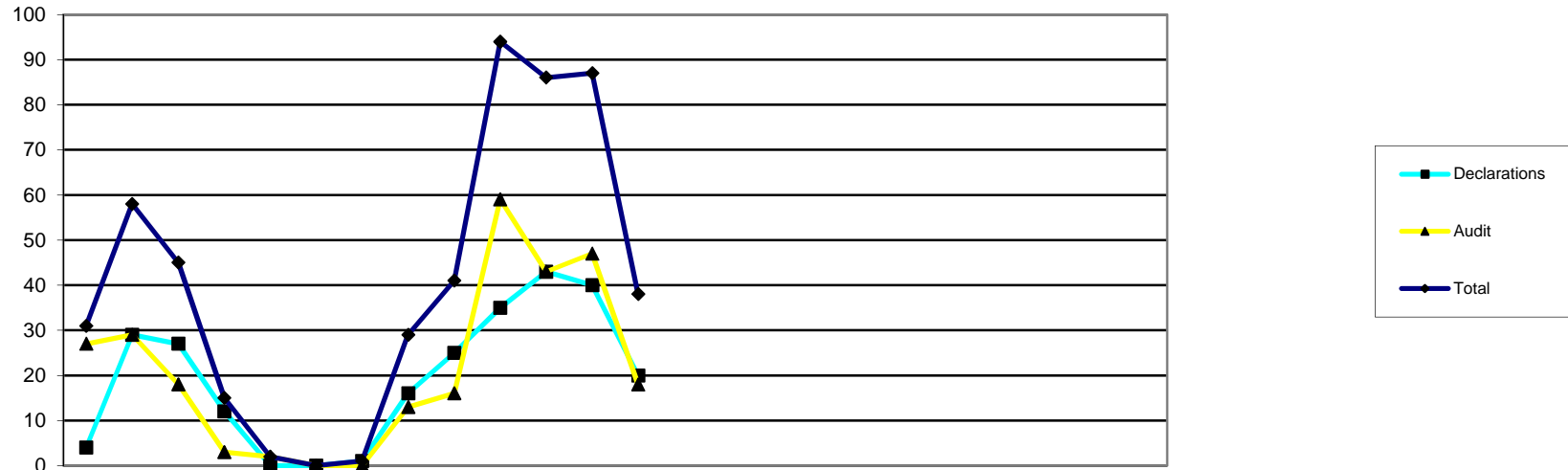


	2010			2011									2012			2005/6	2006/7	2007/8	2008/9	2009/10	2010/11	2011/12																														
	Apr	May	Jun	Jul	Aug	Sep	Oct	Nov	Dec	Jan	Feb	Mar	Apr	May	Jun	Jul	Aug	Sep	Oct	Nov	Dec	Jan	Feb	Mar	FYE	FYE	FYE	FYE	FYE	FYE	YTD																					
<b>Overview of approval visits</b>																																																				
<b>Number of visits</b>	10	5	8	5	2	5	1	3	1	5	7	6	5												0	101	63	42	38	58	5																					
<b>Number of programmes visited</b>	18	14	14	11	3	8	1	4	1	5	13	9	12												27	117	68	84	80	101	12																					



Reason for programme visited	2010			2011									2012												
	Apr	May	Jun	Jul	Aug	Sep	Oct	Nov	Dec	Jan	Feb	Mar	Apr	May	Jun	Jul	Aug	Sep	Oct	Nov	Dec	Jan	Feb	Mar	
New programme (pre-registration)	2	3	4	5	3	3	0	1	1	1	6	0	1												
New programme (post-registration)	0	0	0	0	0	0	0	0	0	0	0	0	0												
New profession	5	3	5	1	0	0	1	1	0	3	7	5	3												
Result of a major change	11	8	5	5	0	3	0	1	0	0	0	4	8												
Result of annual monitoring	0	0	0	0	0	2	0	1	0	1	0	0	0												
Other	0	0	0	0	0	0	0	0	0	0	0	0	0												
<b>Total</b>	<b>18</b>	<b>14</b>	<b>14</b>	<b>11</b>	<b>3</b>	<b>8</b>	<b>1</b>	<b>4</b>	<b>1</b>	<b>5</b>	<b>13</b>	<b>9</b>	<b>12</b>												

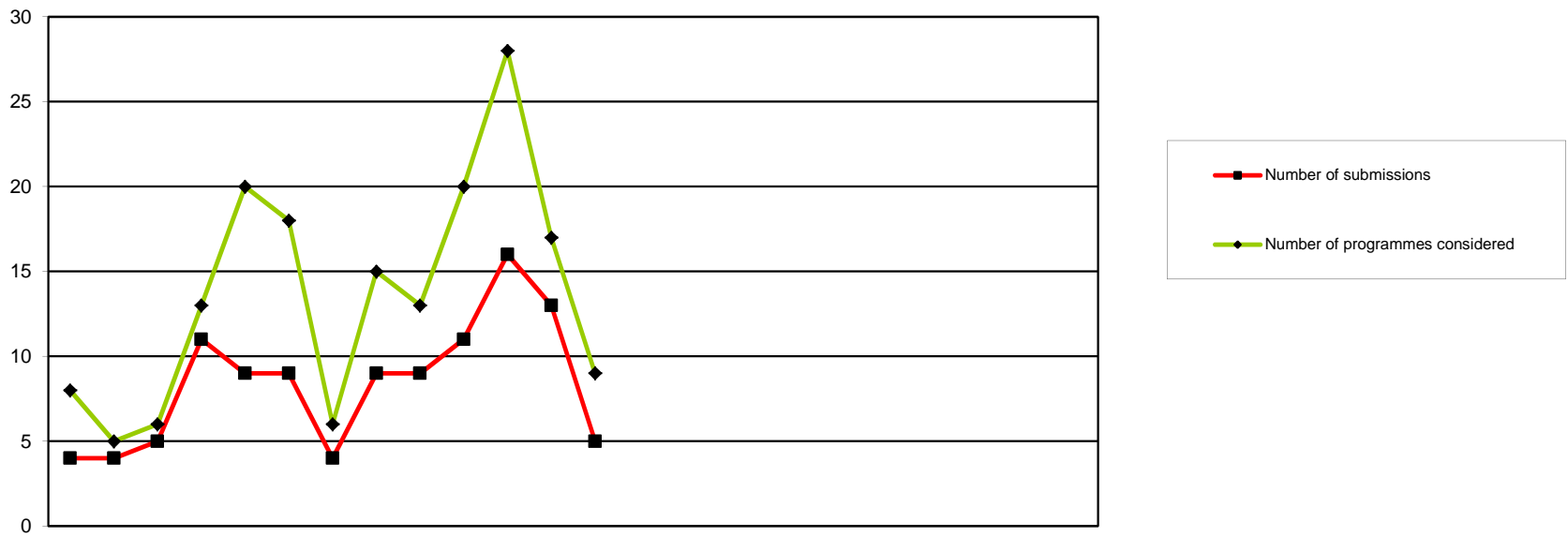
2005/6	2006/7	2007/8	2008/9	2009/10	2010/11	2011/12
FYE	FYE	FYE	FYE	FYE	FYE	YTD
0	18	32	21	25	29	1
7	29	1	7	1	0	0
5	16	4	0	7	31	3
5	32	26	53	42	37	8
5	1	3	3	3	4	0
5	21	2	0	2	0	0
<b>27</b>	<b>117</b>	<b>68</b>	<b>84</b>	<b>80</b>	<b>101</b>	<b>12</b>



	2010			2011									2012											
	Apr	May	Jun	Jul	Aug	Sep	Oct	Nov	Dec	Jan	Feb	Mar	Apr	May	Jun	Jul	Aug	Sep	Oct	Nov	Dec	Jan	Feb	Mar
<b>Annual monitoring submissions</b>																								
<b>Declarations</b>	4	29	27	12	0	0	1	16	25	35	43	40	20											
<b>Audit</b>	27	29	18	3	2	0	0	13	16	59	43	47	18											
<b>Total</b>	31	58	45	15	2	0	1	29	41	94	86	87	38											

2005/6	2006/7	2007/8	2008/9	2009/10	2010/11	2011/12
FYE	FYE	FYE	FYE	FYE	FYE	YTD
113	94	143	167	105	232	20
51	184	135	136	123	257	18
164	278	278	303	228	489	38





	2010			2011									2012		
	Apr	May	Jun	Jul	Aug	Sep	Oct	Nov	Dec	Jan	Feb	Mar	Apr	May	Jun
<b>Major change submissions</b>															
<b>Number of submissions</b>	4	4	5	11	9	9	4	9	9	11	16	13	5		
<b>Number of programmes considered</b>	8	5	6	13	20	18	6	15	13	20	28	17	9		

2005/6	2006/7	2007/8	2008/9	2009/10	2010/11	2011/12
FYE	FYE	FYE	FYE	FYE	FYE	YTD
16	51	62	66	115	104	5
25	97	109	141	179	169	9